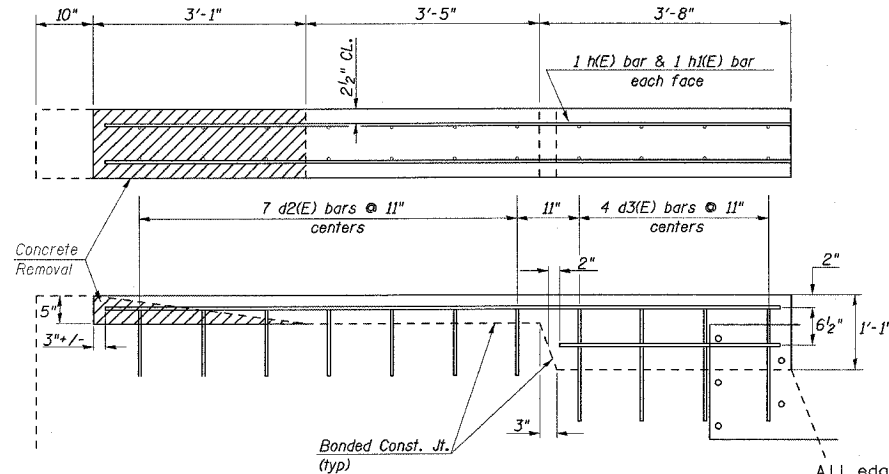


DETAIL OF WINGWALL MODIFICATION SN 015-0003/0004



PLAN & ELEVATION

Burn exist. 1" anchor bolts flush with concrete surface. Grind smooth and seal with epoxy. Cost included with Concrete Structures.

BILL OF MATERIAL & BAR LIST				
BAR	NO.	SIZE	LENGTH	SHAPE
d2(E)	84	4	1'-0"	-----
d3(E)	48	4	1'-11"	-----
h(E)	12	4	9'-9"	-----
h1(E)	12	4	3'-2 1/2"	-----
Concrete Structures	Cu. Yd.		1.5	
Reinforcement Bars, Epoxy Coated	Pound		222	

GENERAL NOTES

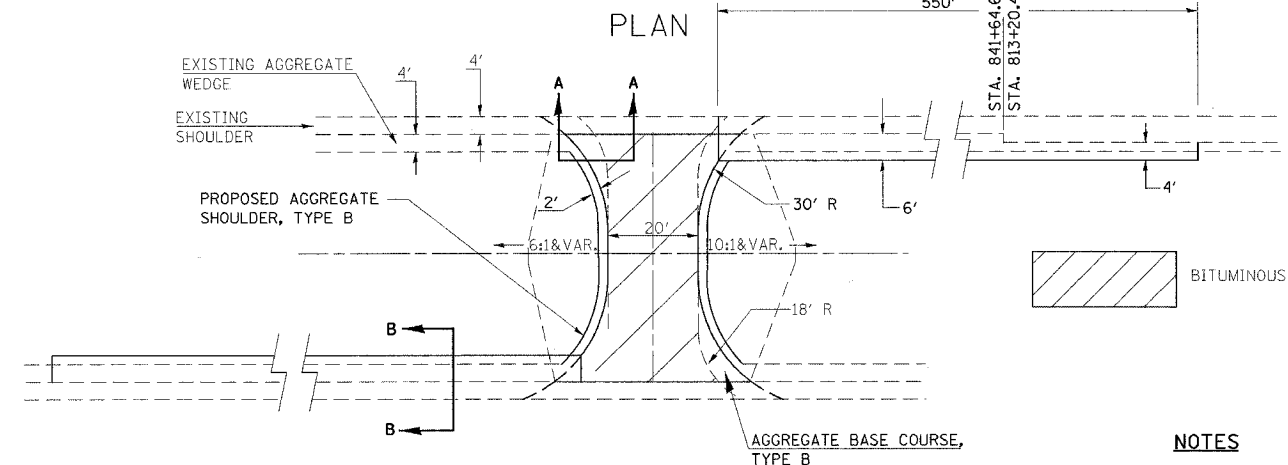
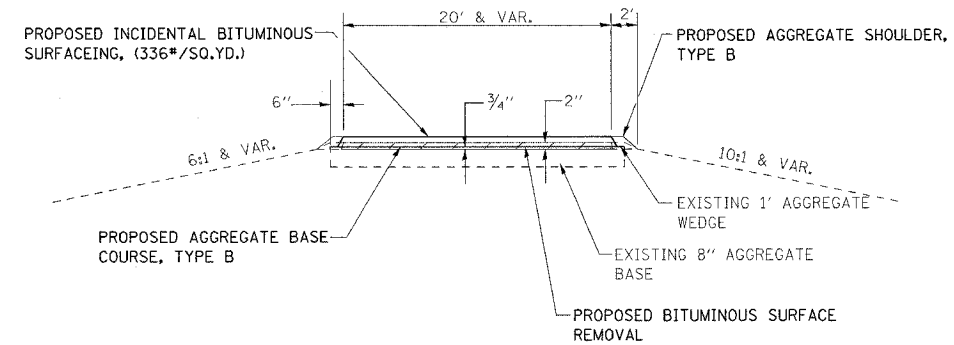
- All edges shall have standard 19 MM (3/4") chamfers.
- Class SI concrete shall be used throughout.
- Bolt holes for connection of type 6 end shoe shall be drilled or formed. Wood blockouts and extra length bolts will be required for flared wingwalls.
- Modification shall be made to the NE, NW and SW wingwalls of the SB structure and to the SW, NE and SE wingwalls of the NB structure.
- Epoxy grout d2(E) & d3(E) bars in 9" deep holes in accordance with Section 584 of the Standard Specifications.
- Concrete removal shall be considered incidental in the cost of Concrete Structures.

DETAIL OF MEDIAN CROSS-OVER RECONSTRUCTION WITH DECELERATION LANES STA. 839+40

F.A.I. RTE.	SECTION	COUNTY	TOTAL SHEETS	SHEET NO.
57		**	76	57

CONTRACT NO. 70028
 (15,18-20)RS-2&(15-22)RS-2
 COLES & CUMBERLAND

TYPICAL

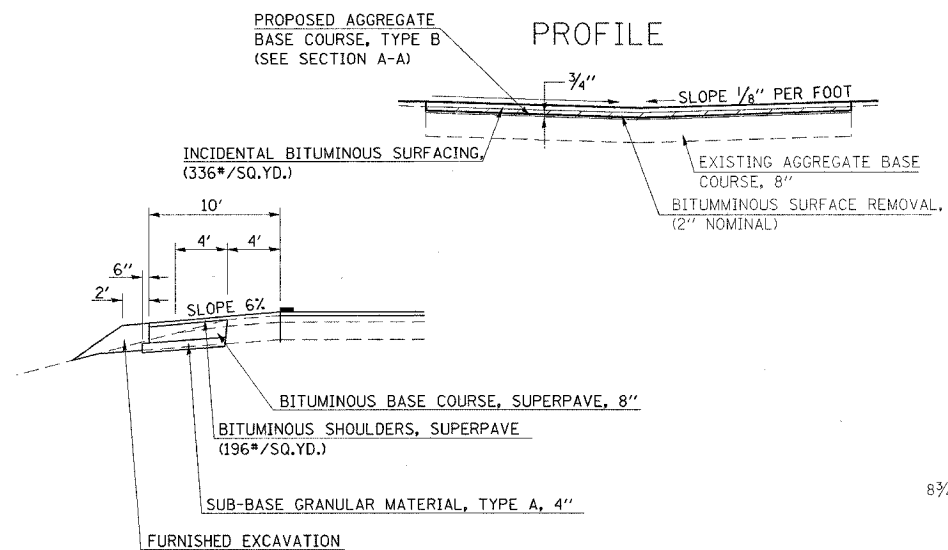


BITUMINOUS SURFACE REMOVAL

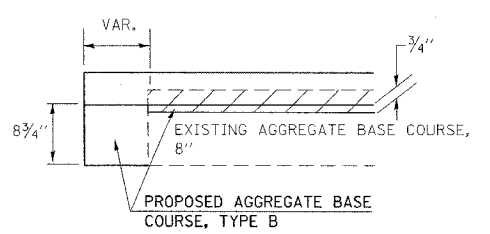
NOTES

- OMIT RUMBLE STRIPS ON SHOULDERS WITHIN THE LIMITS OF THE WIDENING AND MEDIAN CROSSOVER.
- REMOVAL OF EXISTING AGGREGATE SHOULDERS IS INCIDENTAL TO THE COST OF PROPOSED 8" BITUMINOUS CONCRETE BASE COURSE.

PROFILE



SECTION B-B



SECTION A-A