

STATE OF ILLINOIS
DEPARTMENT OF TRANSPORTATION

ROUTE NO.	SECTION	COUNTY	TOTAL SHEETS	SHEET NO.
FAP 332	(24BR-1)BR	CLARK	21	7
FED. ROAD DIST. NO. 7	ALLIANCE	FED. AID PROJECT-		

20 SHEETS

Contract No. 70218

**PARAPET
MIN. BAR LAPS**

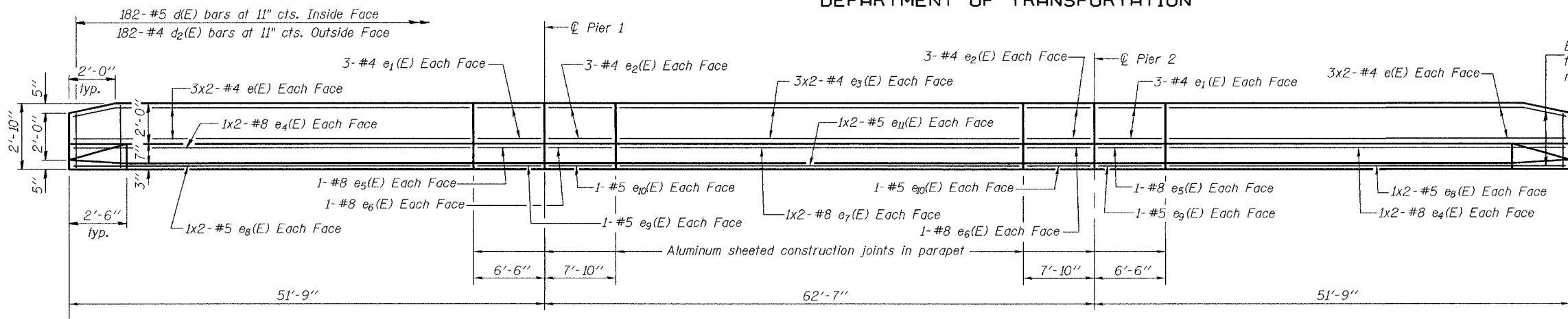
#4 bars = 1'-4"
#5 bars = 1'-8"
#8 bars = 3'-5"

**SUPERSTRUCTURE
BILL OF MATERIAL**

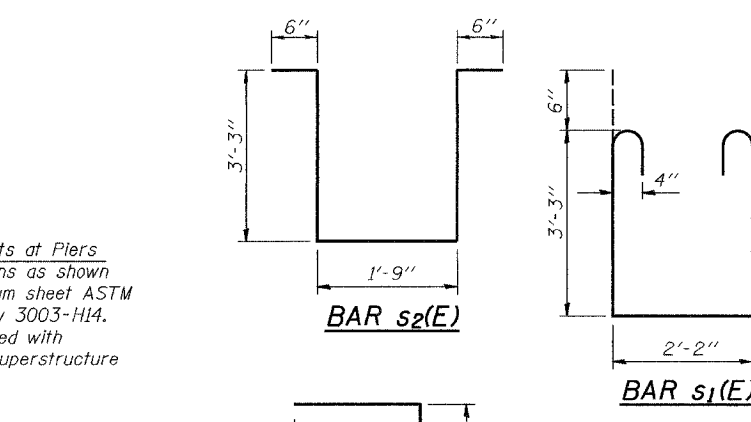
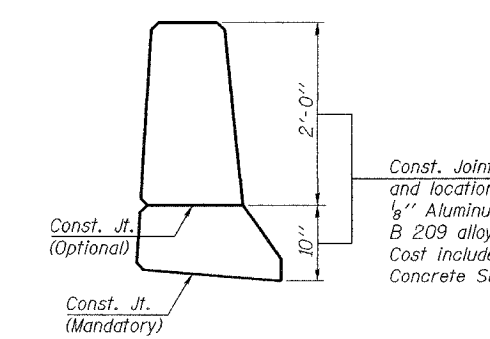
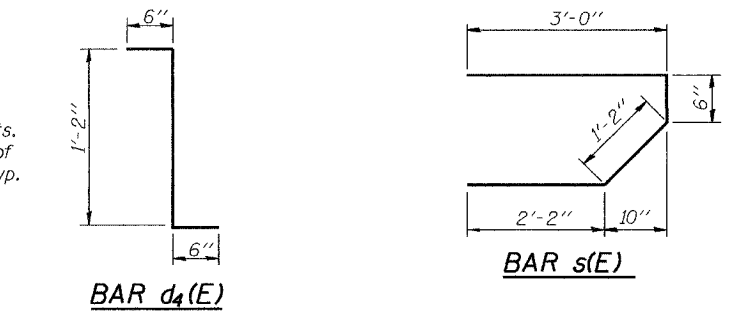
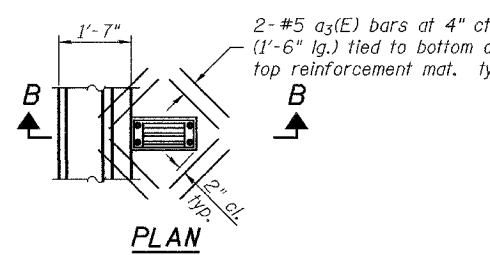
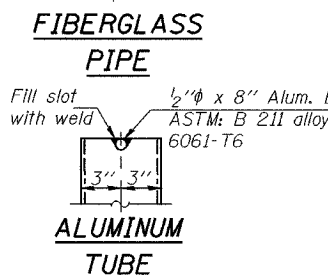
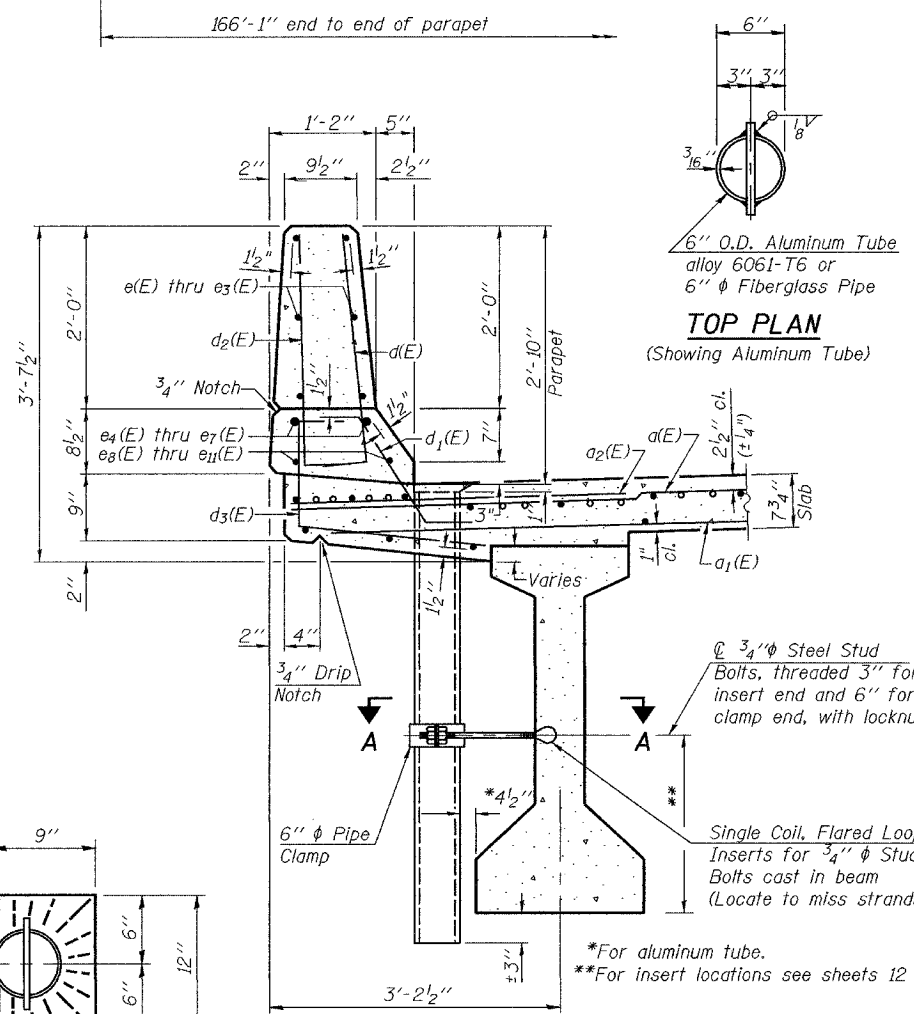
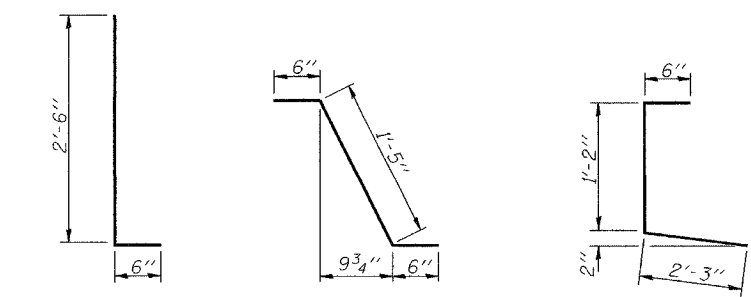
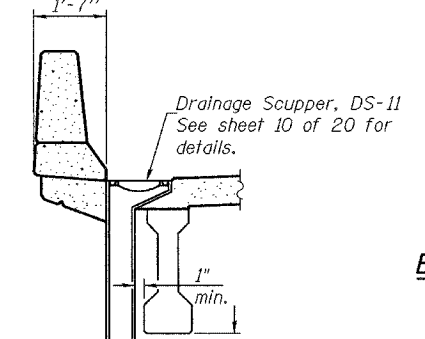
Bar	No.	Size	Length	Shape
a(E)	500	#5	17'-1"	
a ₁ (E)	400	#5	16'-3"	
a ₂ (E)	250	#6	4'-6"	
a ₃ (E)	16	#5	1'-6"	
b(E)	240	#5	29'-1"	
b ₁ (E)	140	#6	22'-10"	
b ₂ (E)	224	#5	25'-2"	
d(E)	364	#5	3'-0"	
d ₁ (E)	352	#5	2'-5"	
d ₂ (E)	364	#4	3'-0"	
d ₃ (E)	364	#4	3'-11"	
d ₄ (E)	12	#5	2'-2"	
e(E)	48	#4	23'-4"	
e ₁ (E)	24	#4	6'-2"	
e ₂ (E)	24	#4	7'-6"	
e ₃ (E)	24	#4	24'-2"	
e ₄ (E)	16	#8	24'-4"	
e ₅ (E)	8	#8	6'-2"	
e ₆ (E)	8	#8	7'-6"	
e ₇ (E)	8	#8	25'-2"	
e ₈ (E)	16	#5	23'-5"	
e ₉ (E)	8	#5	6'-2"	
e ₁₀ (E)	8	#5	7'-6"	
e ₁₁ (E)	8	#5	24'-2"	
m(E)	8	#6	16'-8"	
m ₁ (E)	12	#6	17'-3"	
m ₂ (E)	24	#6	7'-8"	
m ₃ (E)	24	#6	3'-11"	
m ₄ (E)	4	#6	2'-1"	
m ₅ (E)	12	#6	2'-0"	
m ₆ (E)	12	#8	5'-5"	
m ₇ (E)	32	#4	4'-11"	
m ₈ (E)	16	#4	2'-5"	
s(E)	72	#5	6'-10"	
s ₁ (E)	64	#4	9'-8"	
s ₂ (E)	52	#4	9'-3"	
v(E)	68	#5	3'-10"	
Reinforcement Bars, Epoxy Coated	Lbs.	45,830		
Concrete Superstructure	Cu. Yds.	218.6		

Reinforcement bars designated (E) shall be epoxy coated.

**SUPERSTRUCTURE DETAILS
F.A.P. ROUTE 332 - SEC. (24BR-1)BR
CLARK COUNTY
STATION 595+60.10
STRUCTURE NO. 012-0071**



**INSIDE ELEVATION OF PARAPET
(Looking East)**



PARAPET JOINT DETAILS

Notes:
Fiberglass pipe shall conform to ASTM D2996, with short-time rupture strength hoop tensile stress of 30,000 p.s.i. minimum.
The exterior surfaces of the floor drains shall be coated or pigmented by the manufacturer with a color that matches the concrete.
The clamping device and inserts shall be galvanized according to AASHTO M 232. Bars indicated thus 3x2-#4 etc. indicates 3 lines of bars with 2 lengths per line. Cut longitudinal reinforcement to clear drainage scuppers.

TOP PLAN

SECTION THRU PARAPET

SECTION A-A

DESIGNED	CCC
CHECKED	SJB & SMR
DRAWN	BECKY M. CURRY
CHECKED	CCC & SMR

December 8, 2004
EXAMINED *Thomas J. Domagala*
PASSED *Ralph E. Anderson*
ENGINEER OF BRIDGE DESIGN
ENGINEER OF BRIDGES AND STRUCTURES