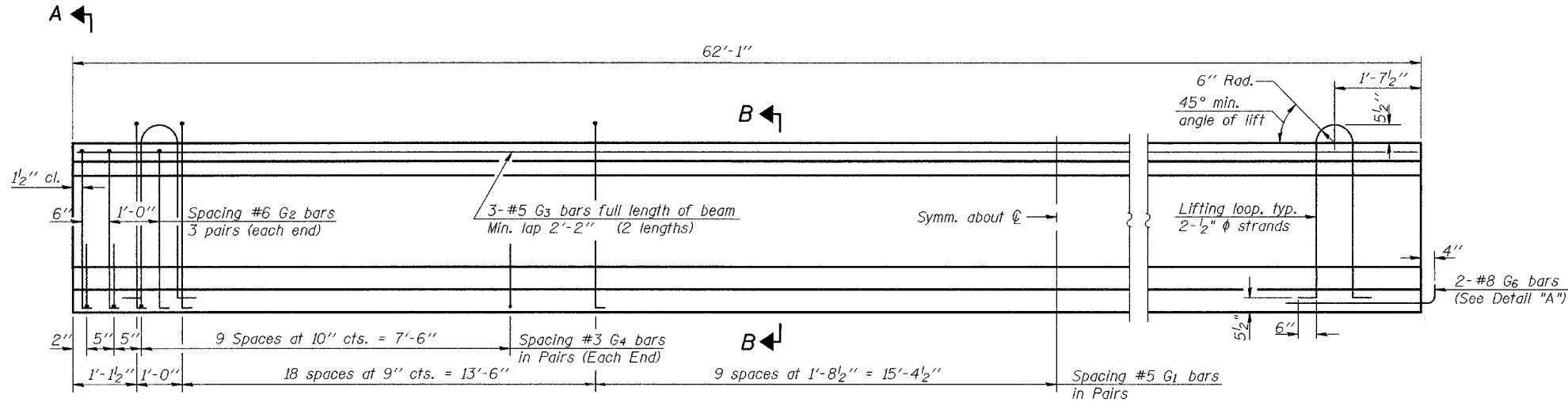


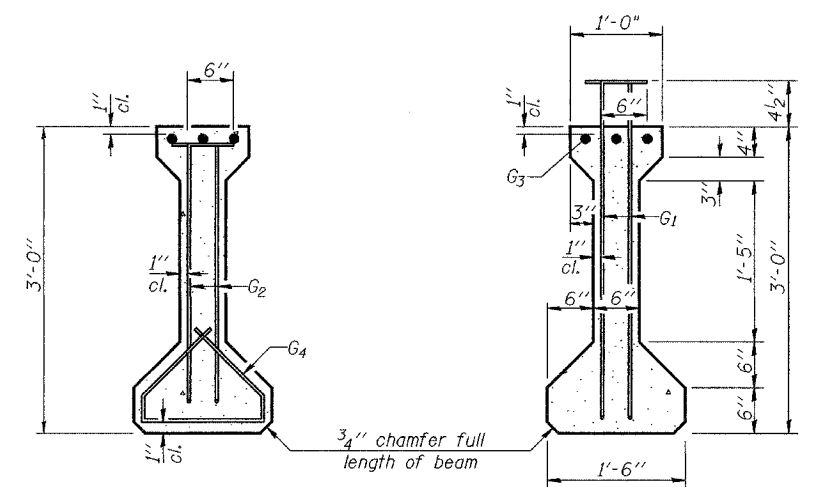
STATE OF ILLINOIS
DEPARTMENT OF TRANSPORTATION

ROUTE NO.	SECTION	COUNTY	SHEET	SHEET NO.
FAP 332	(24BR-1)BR	CLARK	27	20 SHEETS
FED. ROAD DIST. NO. 7	ILLINOIS	FED. AID PROJECT-		

Contract No. 70218

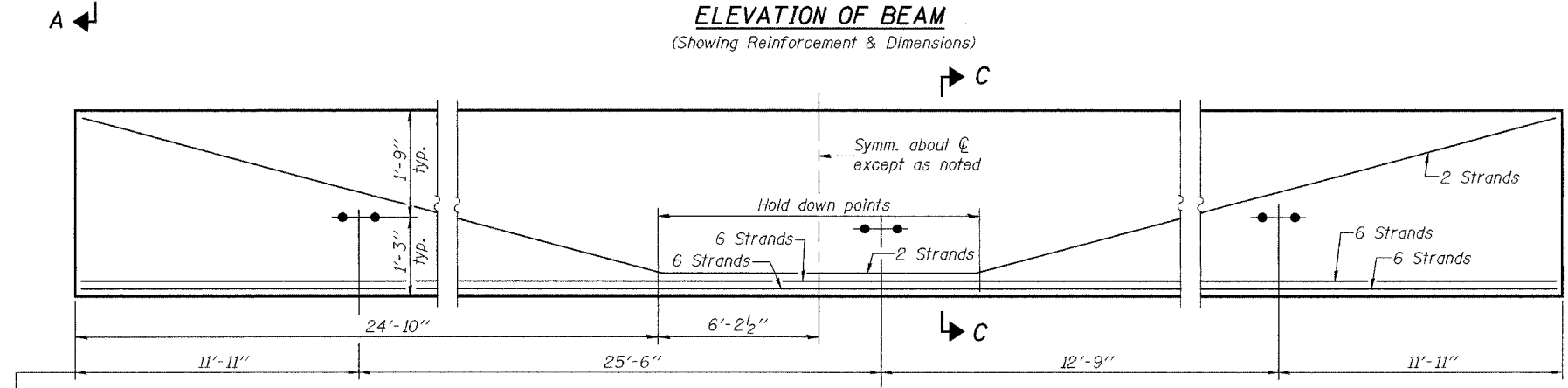


ELEVATION OF BEAM
(Showing Reinforcement & Dimensions)

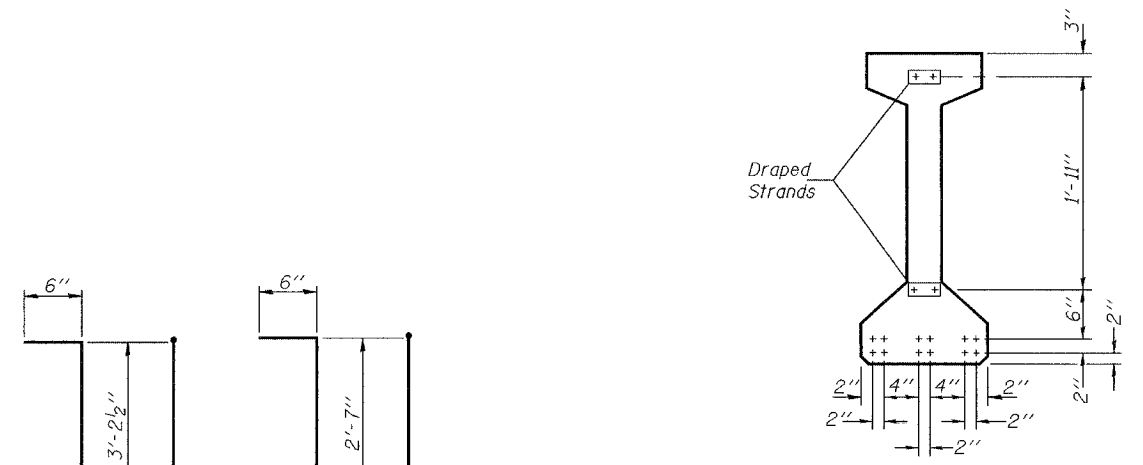


SECTION A-A

SECTION B-B



ELEVATION OF BEAM
(Showing Prestressing Steel)



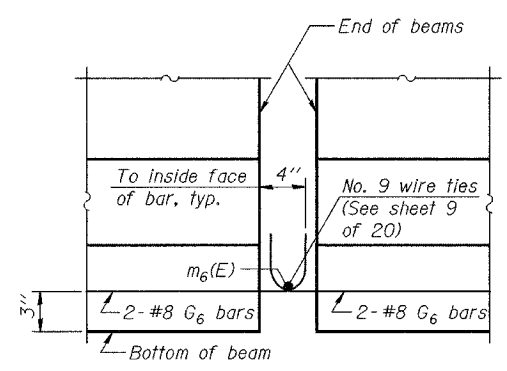
***BAR LIST**

Bar	No.	Size	Length	Shape
G1	57	#5	4'-2 1/2"	7L
G2	12	#6	3'-7"	7L
G3	6	#5	32'-0"	—
G4	24	#3	2'-7"	—
G6	4	#8	3'-6"	—

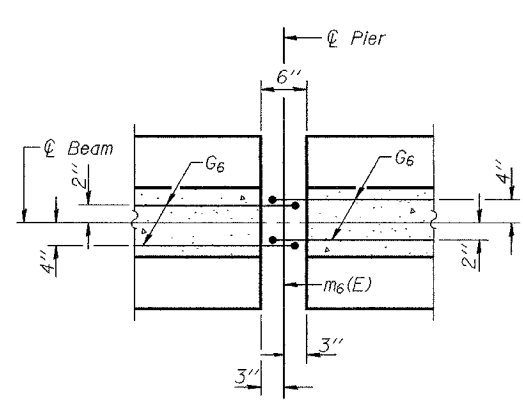
*For one beam only.

BILL OF MATERIAL

Item	Unit	Total
Furnishing and Erecting Precast Prestressed Concrete I-Beams, 36"	Ft.	372.5

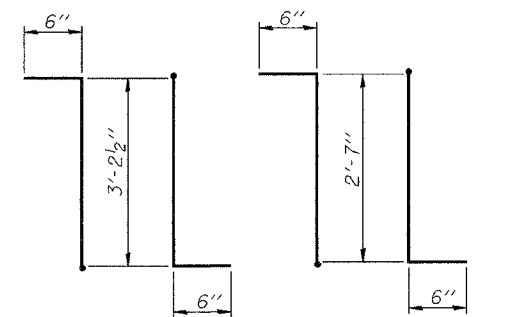


ELEVATION



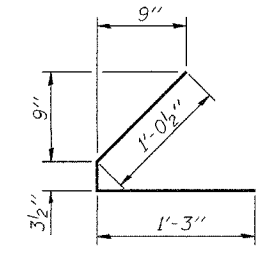
PLAN

DETAIL "A"

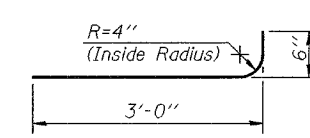


BAR G1

BAR G2



BAR G4



BAR G6

NOTES

Inserts for 3/4" φ threaded dowel rods are to be two strut, coil type for interior I-Beams and single coil, flared loop type for exterior I-Beams.

Prestressing steel shall be uncoated high strength, low relaxation 7-wire strand, Grade 270.

The nominal diameter shall be 1/2" and the nominal cross-sectional area shall be 0.153 sq. in.

Non-prestressing steel shall conform to AASHTO designation M-31 or M-322 Grade 60.

Lifting loops shall be 2-1/2" φ-270 ksi strands, as shown.

Required release strength, f'ci, shall be 5000 psi.

Reinforcement bars designated (E) shall be epoxy coated.

DESIGNED	CCC
CHECKED	SJB & SMR
DRAWN	BECKY M. CURRY
CHECKED	CCC & SMR

EXAMINED	December 8, 2004
PASSED	Thomas J. Damagala ENGINEER OF BRIDGES AND STRUCTURES
	Ralph E. Anderson ENGINEER OF BRIDGES AND STRUCTURES

BEAM DETAILS (SPAN 2)
F.A.P. ROUTE 332 - SEC. (24BR-1)BR
CLARK COUNTY
STATION 595+60.10
STRUCTURE NO. 012-0071