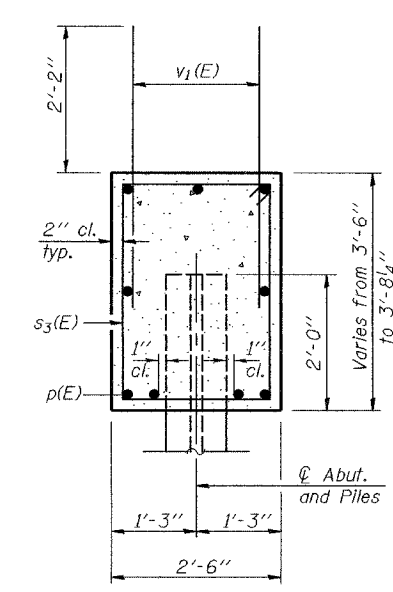
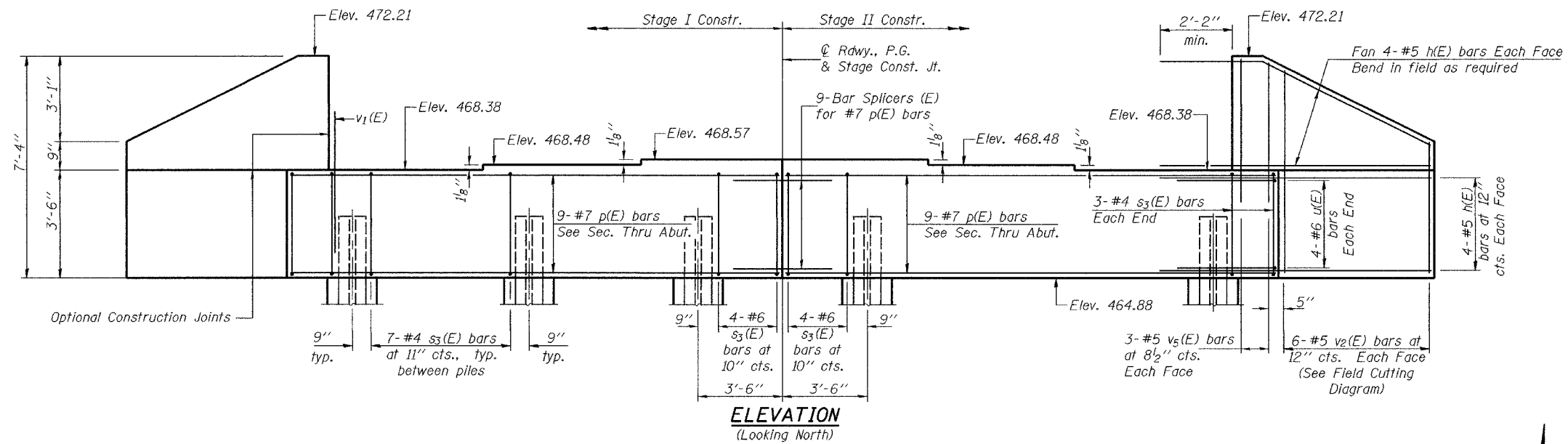


70218

STATE OF ILLINOIS
DEPARTMENT OF TRANSPORTATION

ROUTE NO.	SECTION	COUNTY	SHEET NO.	SHEET
FAP 332	(24BR-1)BR	CLARK	29	20 SHEETS
FED. ROAD DIST. NO. 7		ILLINOIS	FED. AID PROJECT-	
Contract No. 70218				

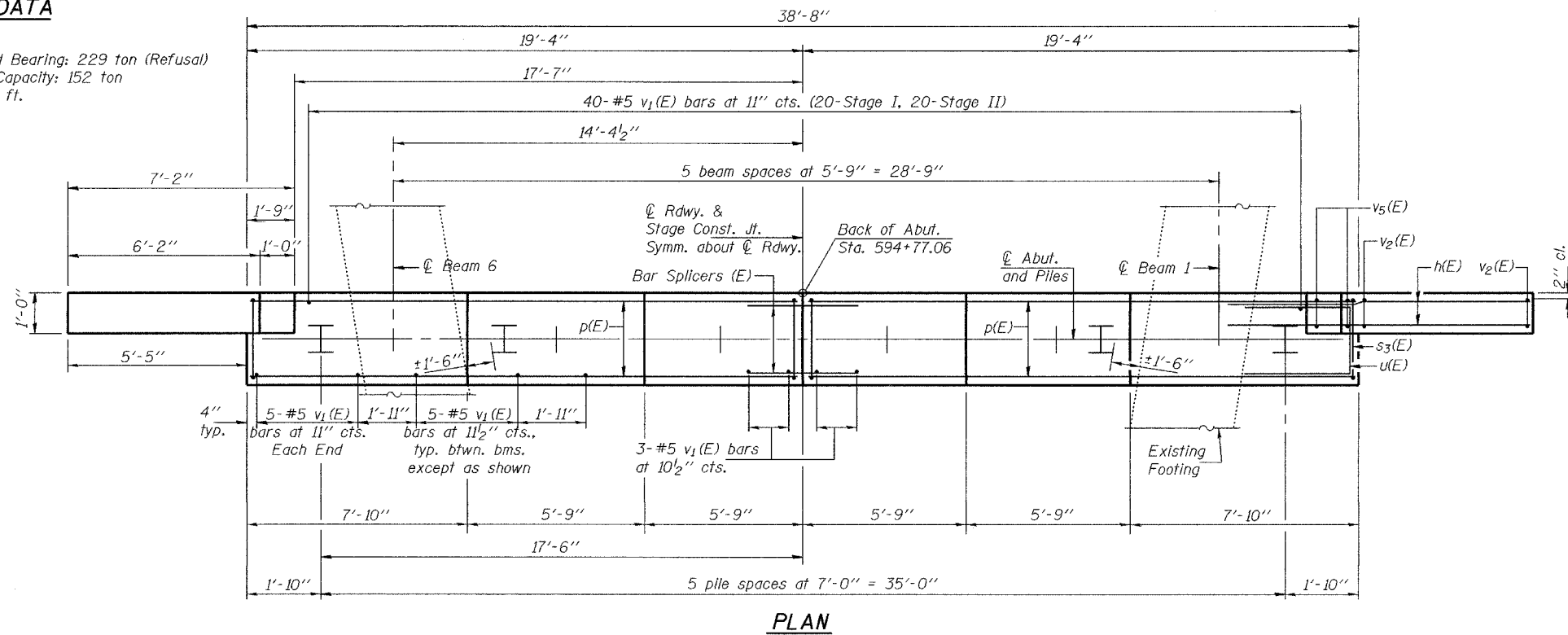
Notes: Four steps monolithically with cap.
Reinforcement bars designated (E)
shall be epoxy coated.



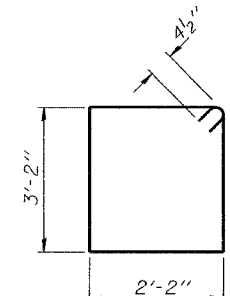
SEC. THRU ABUT.

PILE DATA

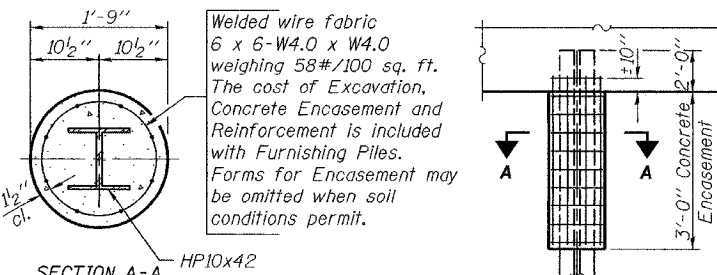
Type: HP10x42
Nominal Required Bearing: 229 ton (Refusal)
Nominal Design Capacity: 152 ton
Est. Length: 26 ft.
No. Required: 6



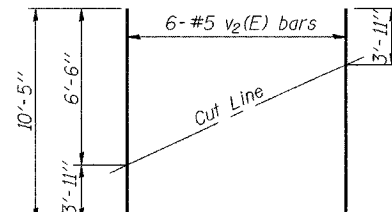
PLAN



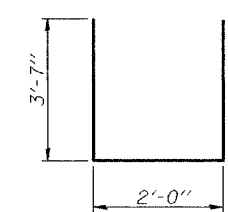
BAR s3(E)



PILE ENCASEMENT DETAIL



FIELD CUTTING DIAGRAM
Order v2(E) full length. Cut as shown and use remainder of bars in opposite face.



BAR u(E)

BILL OF MATERIAL

Bar	No.	Size	Length	Shape
h(E)	32	#5	10'-0"	—
p(E)	18	#7	19'-0"	—
s3(E)	42	#4	11'-5"	□
u(E)	8	#6	9'-2"	—
v1(E)	76	#5	4'-4"	—
v2(E)	12	#5	10'-5"	—
v5(E)	12	#5	5'-4"	—
Furnishing Steel Piles HP10x42			Foot	156
Driving Steel Piles			Foot	156
Concrete Structures			Cu. Yd.	16.5
Reinforcement Bars, Epoxy Coated			Pound	2000
Structure Excavation			Cu. Yd.	137.9

DESIGNED	CCC
CHECKED	SMR
DRAWN	BECKY M. CURRY
CHECKED	CCC & SMR

December 8, 2004
EXAMINED *Thomas J. Damagala*
PASSED *Ronald E. Anderson*
ENGINEER OF BRIDGE DESIGN
ENGINEER OF BRIDGES AND STRUCTURES

NORTH ABUTMENT
F.A.P. ROUTE 332 - SEC. (24BR-1)BR
CLARK COUNTY
STATION 595+60.10
STRUCTURE NO. 012-0071