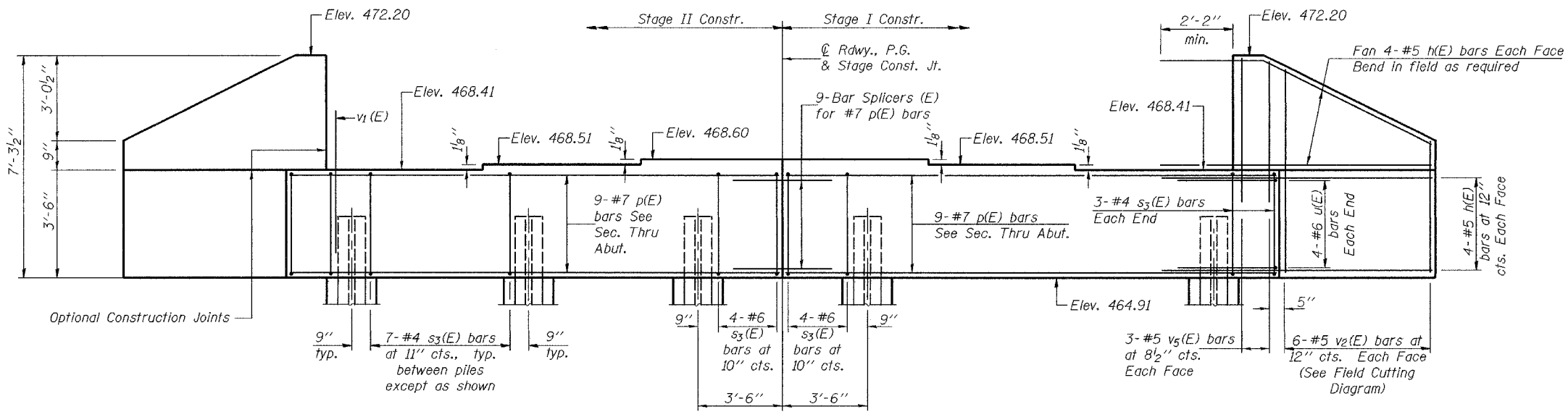


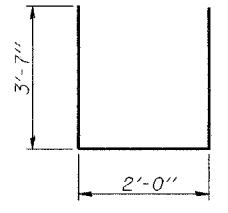
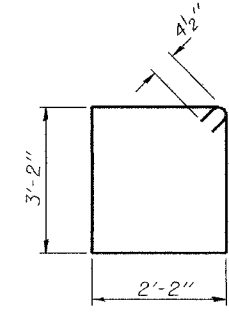
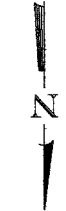
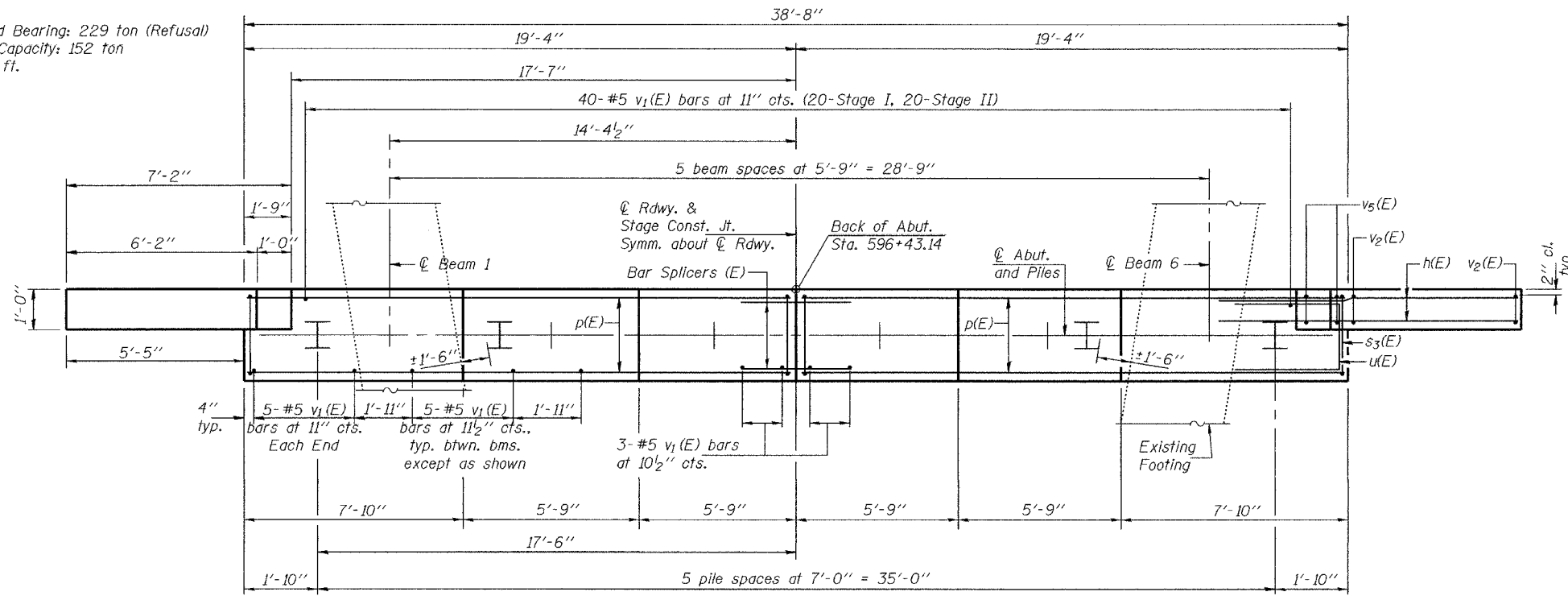
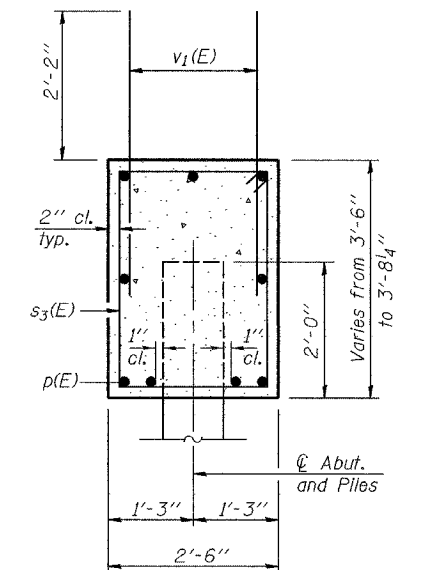
STATE OF ILLINOIS
DEPARTMENT OF TRANSPORTATION

ROUTE NO.	SECTION	COUNTY	SHEET	SHEET NO.
FAP 332	(24BR-1)BR	CLARK	30	16
FED. ROAD DIST. NO. 7		ILLINOIS	FED. AID PROJECT-	20 SHEETS
Contract No. 70218				



PILE DATA

Type: HPI0x42
Nominal Required Bearing: 229 ton (Refusal)
Nominal Design Capacity: 152 ton
Est. Length: 18 ft.
No. Required: 6



BILL OF MATERIAL

Bar	No.	Size	Length	Shape
h(E)	32	#5	10'-0"	—
p(E)	18	#7	19'-0"	—
s ₃ (E)	42	#4	11'-5"	□
u(E)	8	#6	9'-2"	—
v ₁ (E)	76	#5	4'-4"	—
v ₂ (E)	12	#5	10'-5"	—
v ₅ (E)	12	#5	5'-4"	—
Furnishing Steel Piles HPI0x42		Foot	108	
Driving Steel Piles		Foot	108	
Concrete Structures		Cu. Yd.	16.7	
Reinforcement Bars, Epoxy Coated		Pound	2000	
Structure Excavation		Cu. Yd.	137.9	

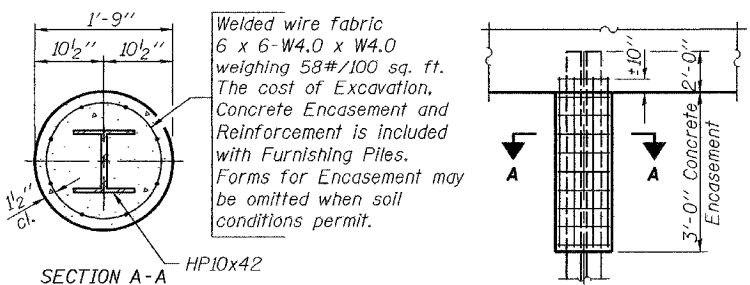
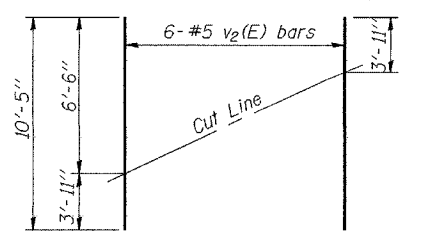
Notes: Pour steps monolithically with cap.
Reinforcement bars designated (E) shall be epoxy coated.

DESIGNED	CCC
CHECKED	SMR
DRAWN	BECKY M. CURRY
CHECKED	CCC & SMR

December 8, 2004

EXAMINED *Thomas J. Damagala*
ENGINEER OF BRIDGE DESIGN

PASSED *Ralph E. Anderson*
ENGINEER OF BRIDGES AND STRUCTURES



FIELD CUTTING DIAGRAM

Order v₂(E) full length. Cut as shown and use remainder of bars in opposite face.

PILE ENCASEMENT DETAIL

SOUTH ABUTMENT
F.A.P. ROUTE 332 - SEC. (24BR-1)BR
CLARK COUNTY
STATION 595+60.10
STRUCTURE NO. 012-0071