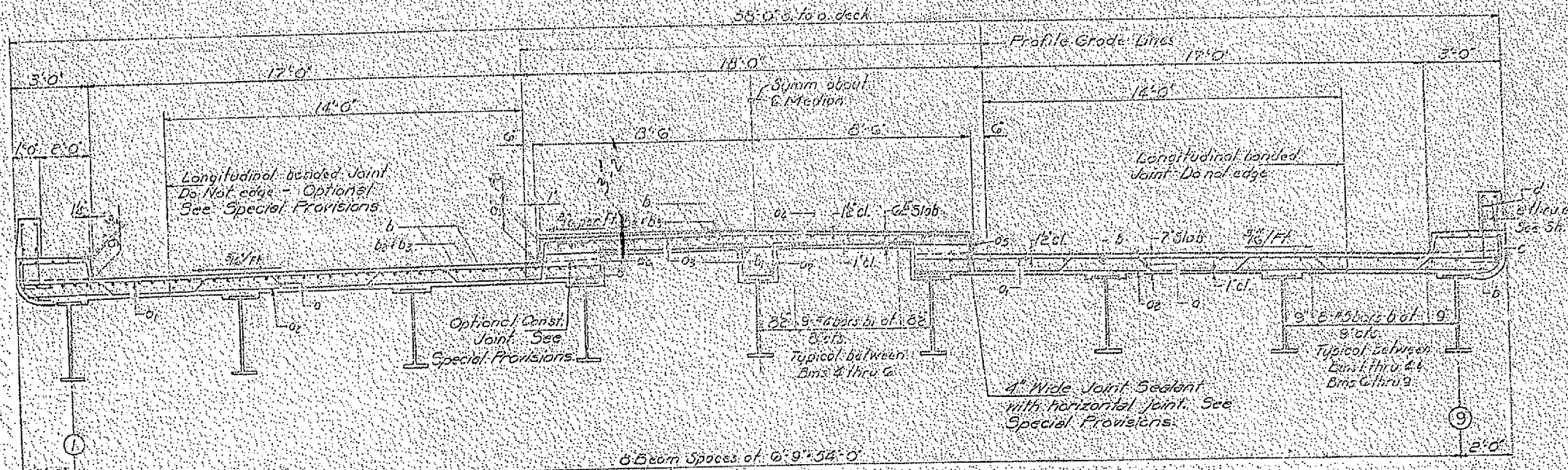


F.A. RTE.	SECTION	COUNTY	TOTAL SHEETS	SHEET NO.
*	**	CHAMPAIGN	25	8

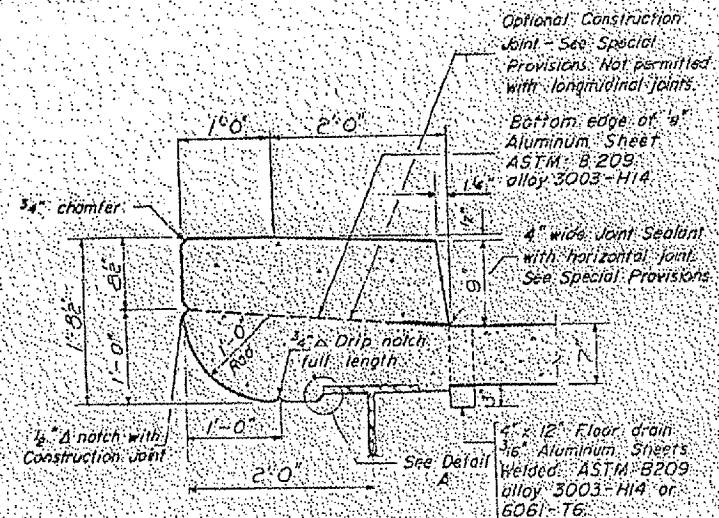
* 1-74 & 1-57
 ** D-5 BRIDGE PAINTING 2005-1
 CONTRACT NO. 70451



NEAR PIERS

NEAR MIDSPAN

CROSS SECTION



CURB DETAIL

Cost of aluminum sheets and drains shall be incidental to Class X Concrete.



STANDARD FILLET DETAIL

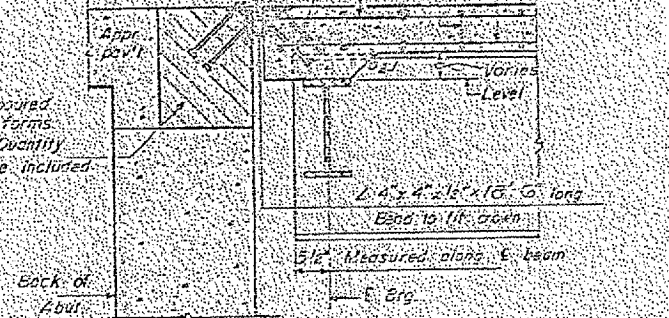
To determine "f". After all structural steel has been erected, elevations of the top flanges of the beams shall be taken at intervals shown on sheet 9-10. These elevations, subtracted from the Grade Elevations, Adjusted for Dead Load Deflections, shall on sheet 9-10 minus slab thickness equals the fillet height "f" above top of beams.

1/2" x holes of 12" dia. for 3/4" bolts set on 2" gage line. All bolts shall be burned, sawed, or clipped off flush with back of angles after forms are removed.

1/2" vent holes of 12" dia. set on 1/2" gage line.

3/4" x 1/2" CP 1020 STL granular or 2010 (No. filled heads) shall automatically end welded (Alternate of 1'-0" dia.)

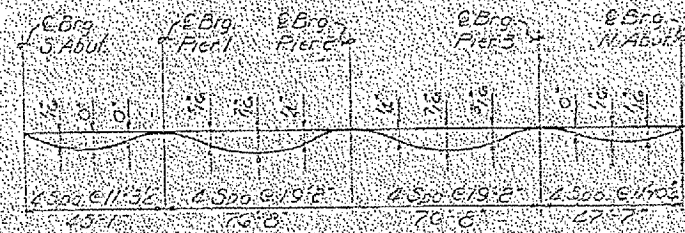
Hatched area to be poured after superstructure forms have been removed. Quantity of Class X Concrete included with superstructure.



SECTION A-A



DETAIL A



DEAD LOAD DEFLECTION DIAGRAM

(of concrete only) loads are not to be used in working from the grade but load deflections as shown.

SUPERSTRUCTURE
 F.A. I.R. 74 SEC. 10-21
 CHAMPAIGN COUNTY
 STA. 1613+21.90

FOR INFORMATION ONLY

DESIGNED <i>John E. Madonia</i>	EXAMINED <i>John E. Madonia</i>
CHECKED <i>William R. Rauscher</i>	PAVED <i>John E. Madonia</i>
DRAWN <i>W.E. Overton</i>	APPROVED <i>John E. Madonia</i>
CHECKED <i>G.R.</i>	