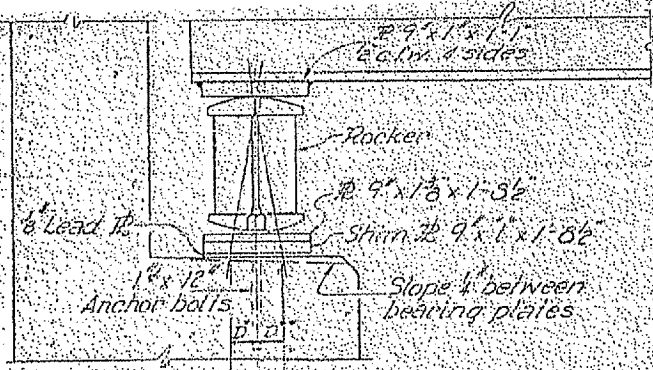
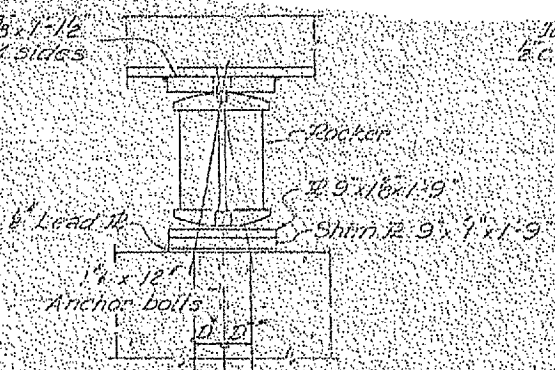


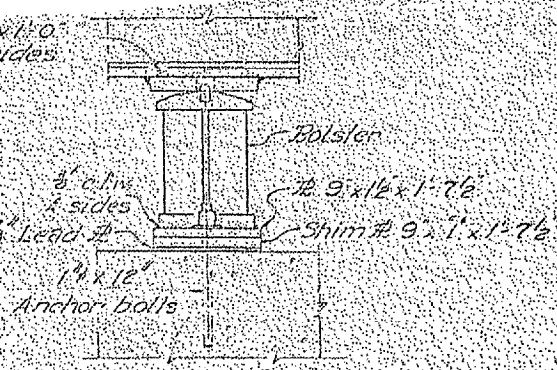
* I-74 & I-57
 ** D-5 BRIDGE PAINTING 2005-1
 CONTRACT NO. 70451



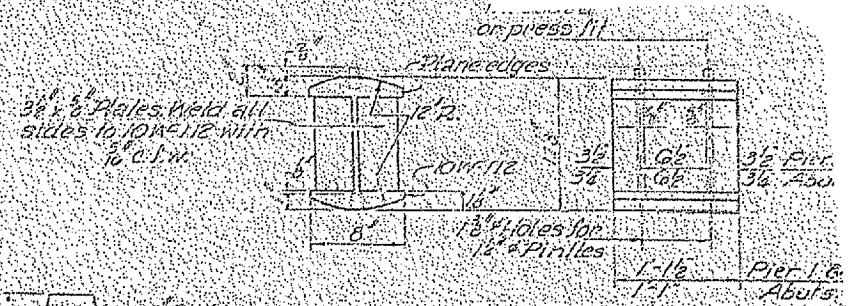
ELEVATION



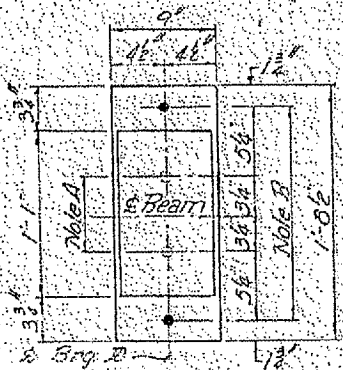
ELEVATION



ELEVATION

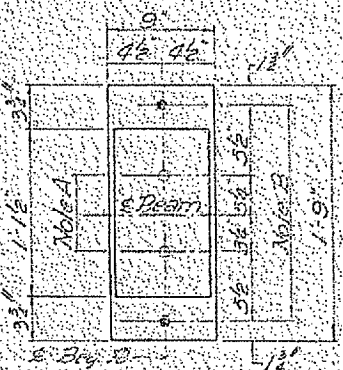


ROCKER



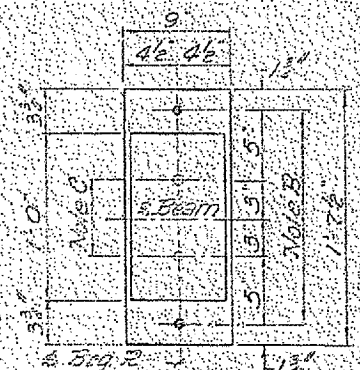
PLAN @ ABUTMENT

Note A
 1 1/2 inch Holes 1 inch deep in top flange for purlins. Thread or press fit purlins into bottom flange.



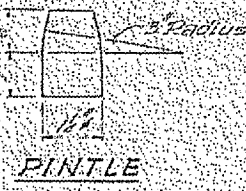
PLAN @ PIERS 1 & 3

Note B
 1 1/2 inch Holes for 1 1/2 inch anchor bolts. 2 1/2 x 2 1/2 x 1/2 inch. Washer under nut.

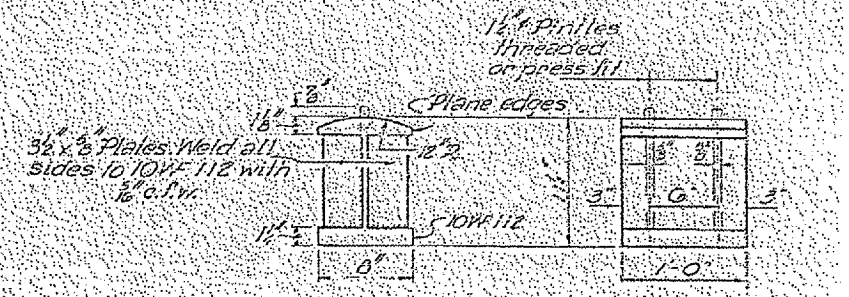


PLAN @ PIER 2

Note C
 1 1/2 inch Holes 1 inch deep in top flange only for 1 1/2 inch purlins.



PINTLE



BOLSTER

BEARING ASSEMBLY DETAILS

NOTES ON SETTING OF ANCHOR BOLTS AT EXP. BRGS

- a) D^* (Side of brg. away from fixed brg.)
 $D^* = \frac{1}{8}$ per each 100 increment of expansion for every 15 fall from temp. of 50°F
- D^{**} (Side of brg. toward fixed brg.)
 $D^{**} = \frac{1}{8}$ per each 100 increment of expansion for every 15 rise from temp. of 50°F
- b) After beams have been erected and dimension D^* or D^{**} determined anchor bolts shall be placed in drilled holes and grouted.

TABLE OF MOMENTS & REACTIONS						
MOMENTS			REACTIONS			
45p.1	Pier 1	53.2	Pier 2	5.461	Pier 1	Pier 2
D.L.	97.75	353.39	263.5	359.05	74.5	65.0
L.L.	276.19	305.62	406.44	400.58	33.0	45.1
Imp.	81.21	839.100	55.99	54.34	50.0	45.4
Total	455.15	1582.12	110.14	109.43	28.7	113.7
					133.7	114.4

Moments in Ft.-kips
 Reactions in kips

FOR INFORMATION ONLY

BEARING DETAILS