

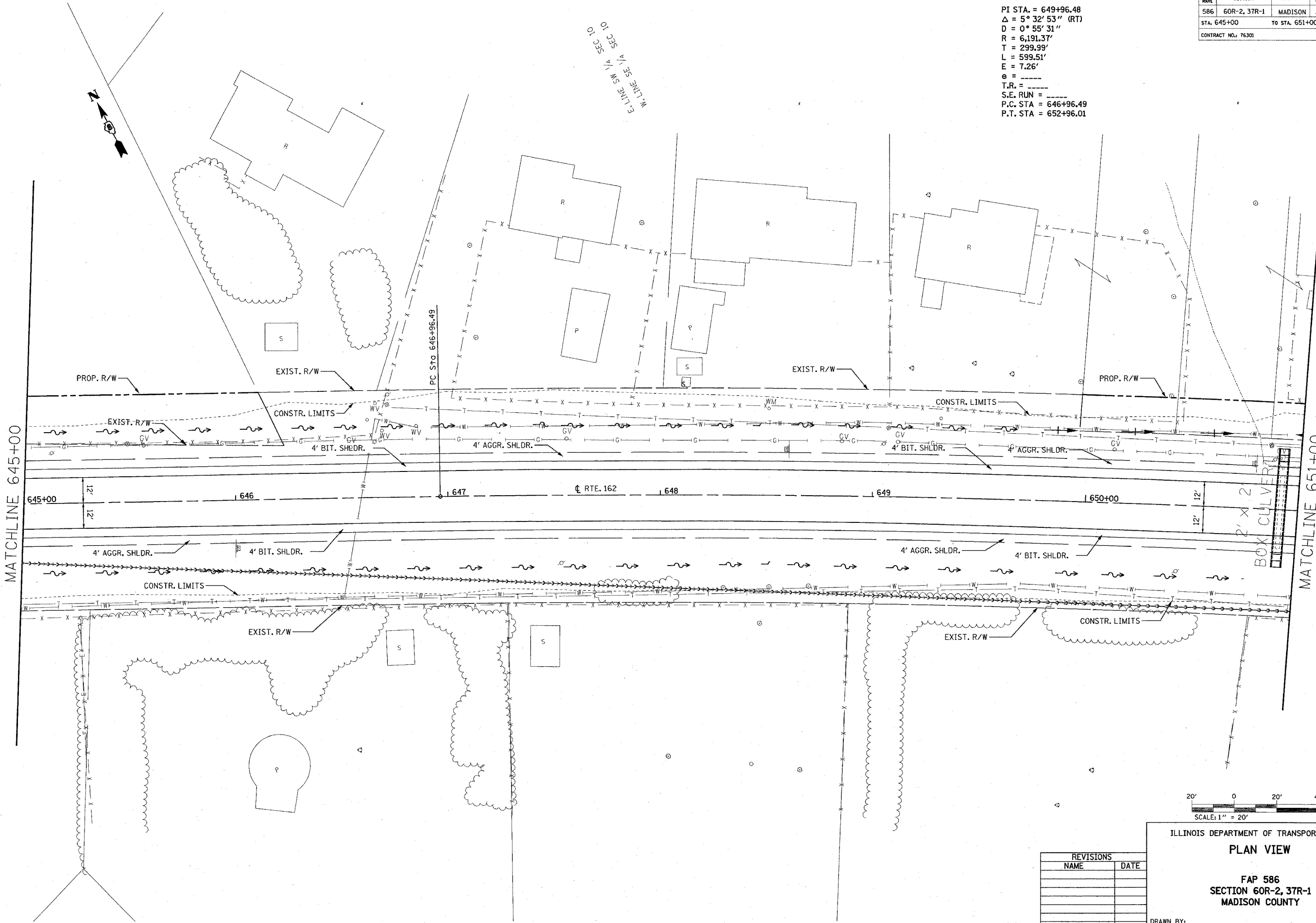
FAP NO.	SECTION	COUNTY	TOTAL SHEETS	SHEET NO.
586	60R-2, 37R-1	MADISON	502	74
STA. 645+00		TO STA. 651+00		
CONTRACT NO.: 76301				

PI STA. = 649+96.48  
 $\Delta = 5^\circ 32' 53''$  (RT)  
 $D = 0^\circ 55' 31''$   
 $R = 6,191.37'$   
 $T = 299.99'$   
 $L = 599.51'$   
 $E = 7.26'$   
 $\theta = \text{---}$   
 $T.R. = \text{---}$   
 $S.E. RUN = \text{---}$   
 $P.C. STA. = 646+96.49$   
 $P.T. STA. = 652+96.01$

PLAN	SUPERSEDED	DATE
NO.	BY	
	DATE	
	BY	
	DATE	
	BY	
	DATE	
	BY	
	DATE	

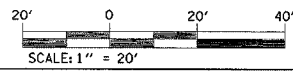
MATCHLINE 645+00

MATCHLINE 651+00



E LINE SW 1/4 SEC 10  
W LINE SE 1/4 SEC 10

P.C. Sta 646+96.49



ILLINOIS DEPARTMENT OF TRANSPORTATION  
**PLAN VIEW**  
 FAP 586  
 SECTION 60R-2, 37R-1  
 MADISON COUNTY  
 DRAWN BY:

REVISIONS	
NAME	DATE

Thursday July 01, 2004 @ 2:04:46 PM  
 C:\projects\60R-2,37R-1\plan\p-068a.dwg LVJ-BS  
 C:\projects\60R-2,37R-1\plan\p-068a.dwg LVJ-BS  
 C:\projects\60R-2,37R-1\plan\p-068a.dwg LVJ-BS  
 C:\projects\60R-2,37R-1\plan\p-068a.dwg LVJ-BS  
 C:\projects\60R-2,37R-1\plan\p-068a.dwg LVJ-BS

PLOT DATE: Thursday July 01, 2004 @ 2:04:46 PM