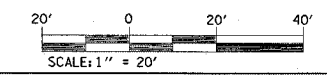
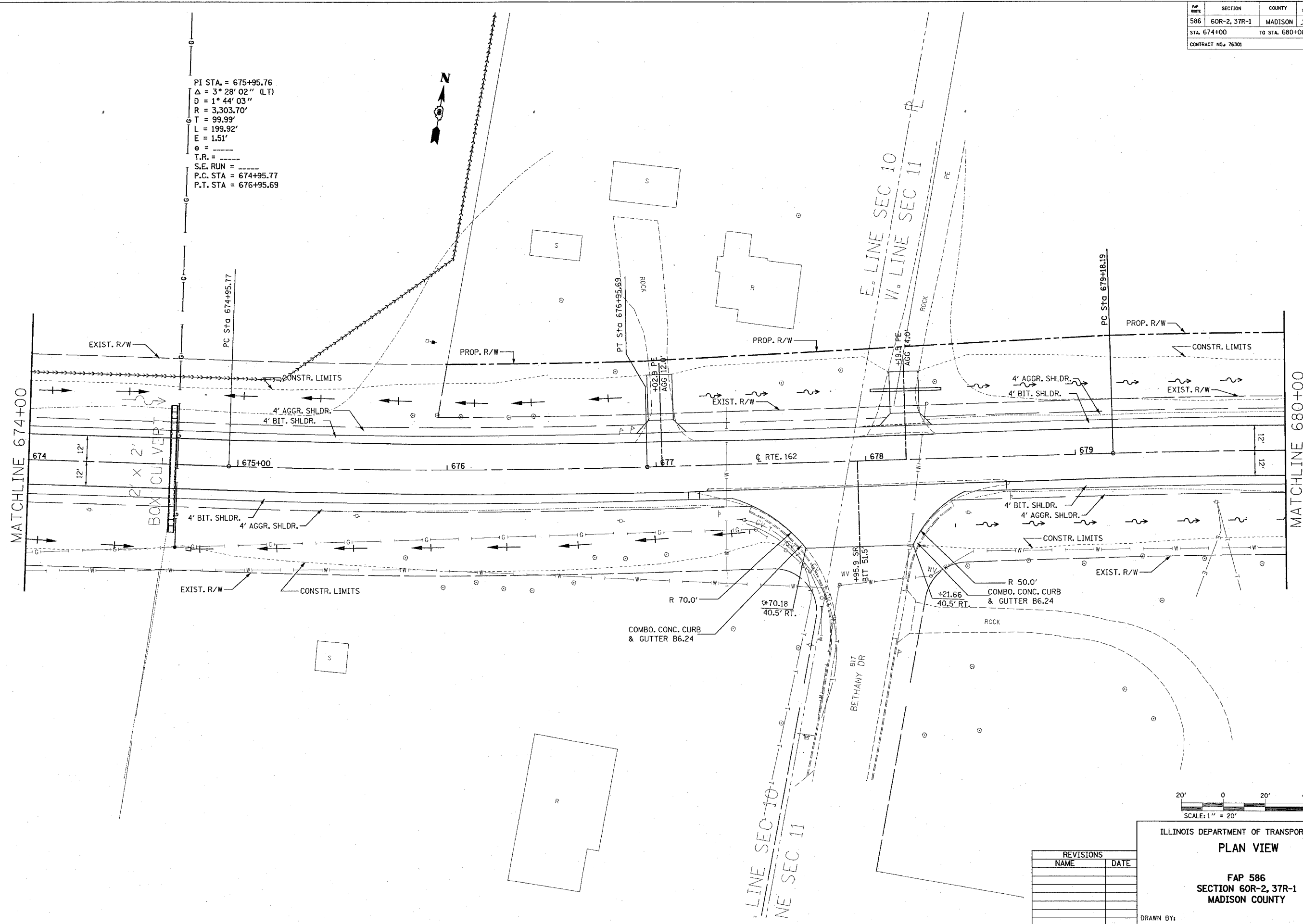


FAP NO.	SECTION	COUNTY	TOTAL SHEETS	SHEET NO.
586	60R-2, 37R-1	MADISON	502	79
STA. 674+00		TO STA. 680+00		
CONTRACT NO.: 76301				

PI STA. = 675+95.76  
 $\Delta = 3^\circ 28' 02''$  (LT)  
 $D = 1^\circ 44' 03''$   
 $R = 3,303.70'$   
 $T = 99.99'$   
 $L = 199.92'$   
 $E = 1.51'$   
 $e = \dots$   
 T.R. = \dots  
 S.E. RUN = \dots  
 P.C. STA. = 674+95.77  
 P.T. STA. = 676+95.69

DATE	BY
DATE	BY
DATE	BY
DATE	BY



ILLINOIS DEPARTMENT OF TRANSPORTATION  
**PLAN VIEW**  
 FAP 586  
 SECTION 60R-2, 37R-1  
 MADISON COUNTY

REVISIONS	
NAME	DATE

DRAWN BY:  
 PLOT DATE: Thursday July 01, 2004 @ 2:04:44 PM

7/1/2004  
 Thursday July 01, 2004 @ 2:04:44 PM  
 C:\pwworkspace\60R-2, 37R-1\60R-2, 37R-1\1517222-227-2937-4844-46-1636-5357-59  
 C:\pwworkspace\60R-2, 37R-1\60R-2, 37R-1\1517222-227-2937-4844-46-1636-5357-59  
 C:\pwworkspace\60R-2, 37R-1\60R-2, 37R-1\1517222-227-2937-4844-46-1636-5357-59  
 C:\pwworkspace\60R-2, 37R-1\60R-2, 37R-1\1517222-227-2937-4844-46-1636-5357-59