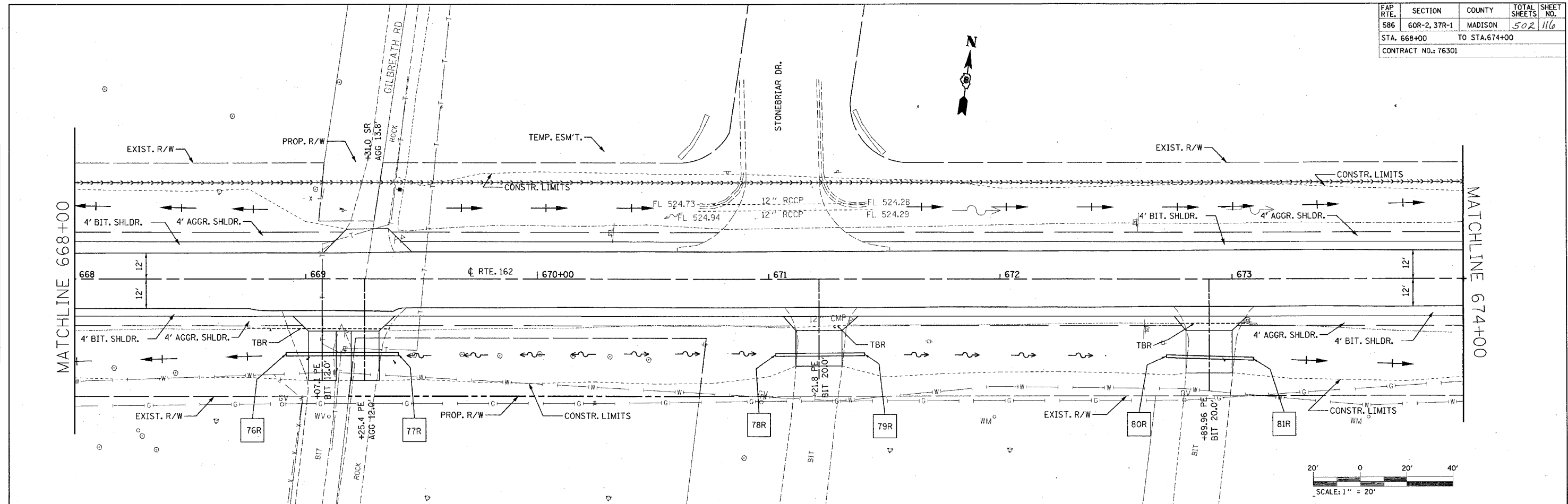


FAP RTE.	SECTION	COUNTY	TOTAL SHEETS	SHEET NO.
586	60R-2, 37R-1	MADISON	502	116
STA. 668+00		TO STA. 674+00		
CONTRACT NO.: 76301				

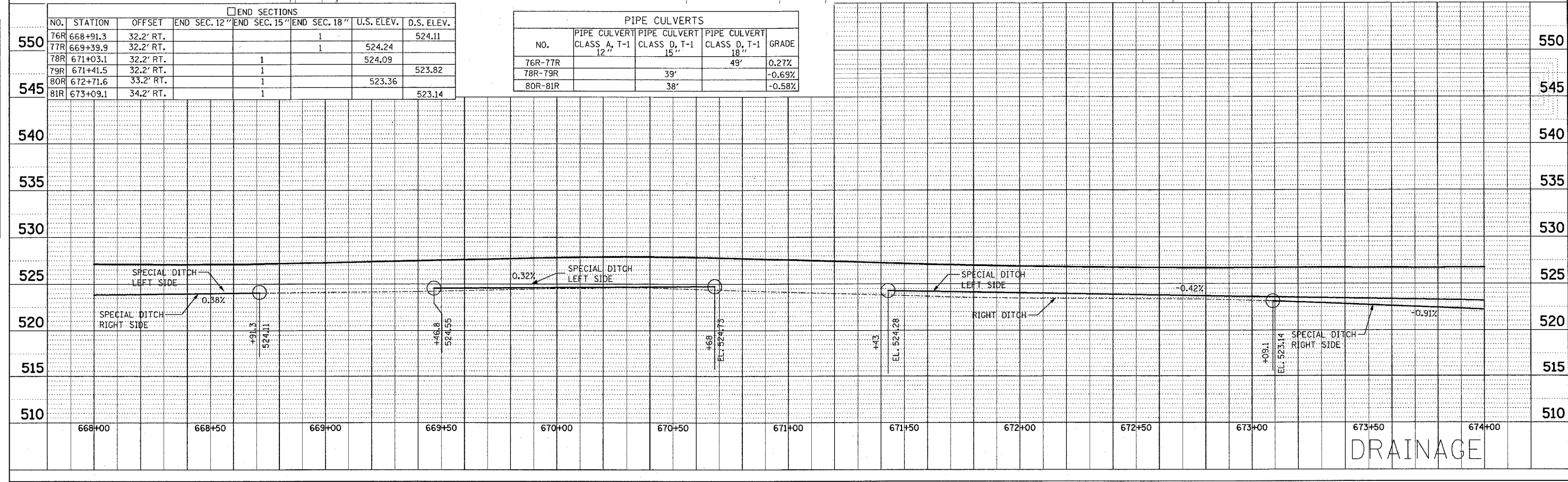
PLAN  
 SURVEYED BY: \_\_\_\_\_  
 DRAWN BY: \_\_\_\_\_  
 CHECKED BY: \_\_\_\_\_  
 DATE: \_\_\_\_\_

PROFILE  
 SURVEYED BY: \_\_\_\_\_  
 DRAWN BY: \_\_\_\_\_  
 CHECKED BY: \_\_\_\_\_  
 DATE: \_\_\_\_\_



NO.	STATION	OFFSET	END SECTIONS			U.S. ELEV.	D.S. ELEV.
			END SEC. 12"	END SEC. 15"	END SEC. 18"		
76R	668+91.3	32.2' RT.			1	524.24	524.11
77R	669+39.9	32.2' RT.			1	524.09	523.82
78R	671+03.1	32.2' RT.		1		523.36	523.14
79R	671+41.5	32.2' RT.		1			
80R	672+71.6	33.2' RT.		1			
81R	673+09.1	34.2' RT.		1			

PIPE CULVERTS				
NO.	PIPE CULVERT CLASS A, T-1	PIPE CULVERT CLASS D, T-1	PIPE CULVERT CLASS D, T-1	GRADE
76R-77R	12"	15"	18"	0.27%
78R-79R		39'		-0.69%
80R-81R		38'		-0.58%



DRAINAGE