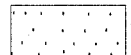
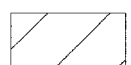

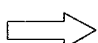
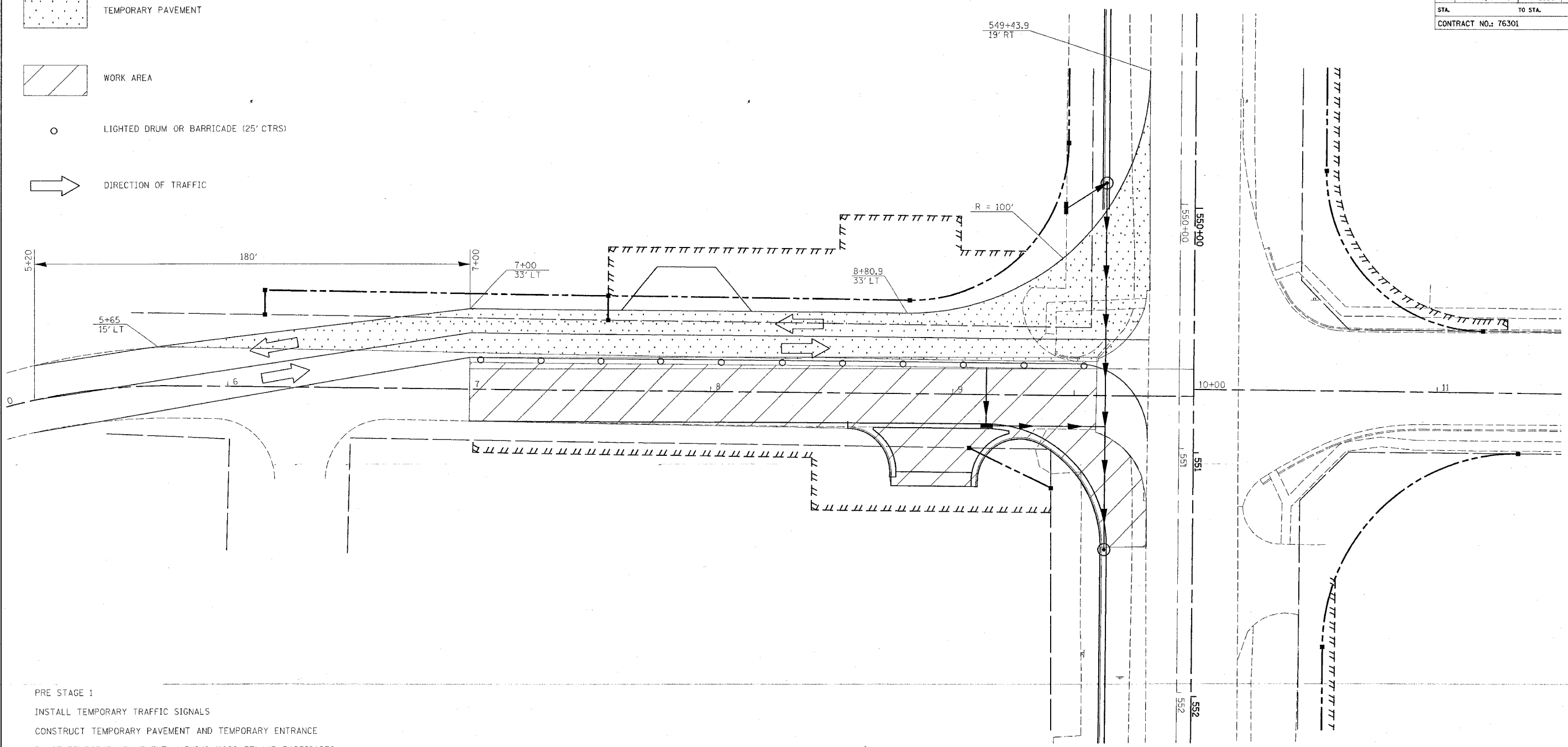


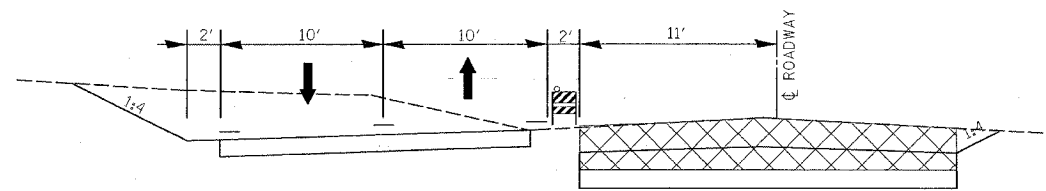
FAP ROUTE	SECTION	COUNTY	TOTAL SHEETS	SHEET NO
586	60R-2, 37R-1	MADISON	502	125
STA.		TO STA.		
CONTRACT NO.: 76301				

PLAN	DATE
SURVEYED	
NOTE BOOK	
ALIGNMENT CHECKED	
PAVING FILE NAME	

-  TEMPORARY PAVEMENT
-  WORK AREA
-  LIGHTED DRUM OR BARRICADE (25' CTRS)
-  DIRECTION OF TRAFFIC



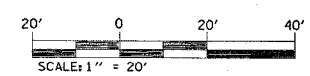
PRE STAGE 1  
 INSTALL TEMPORARY TRAFFIC SIGNALS  
 CONSTRUCT TEMPORARY PAVEMENT AND TEMPORARY ENTRANCE  
 PLACE TEMPORARY PAVEMENT MARKING (1020 FT) AND BARRICADES  
 SHIFT TRAFFIC



STAGE 1  
 REMOVE EXISTING PAVEMENT  
 INSTALL CURB & GUTTER, STORM SEWER, INLET AND ENTRANCE  
 PLACE PCC PAVEMENT  
 PLACE TEMPORARY PAVEMENT MARKING FOR STAGE 2 (595 FT)

NOTE: CONTRACTOR SHALL MAINTAIN POSITIVE DRAINAGE AT THE PROPOSED INLETS WITH A METHOD APPROVED OF BY THE ENGINEER. COST TO BE INCLUDED IN 'TRAFFIC CONTROL AND PROTECTION (SPECIAL) LOCATION NO. 1'.  
 THE RAISED MEDIANS ON IL 162 SHALL NOT BE CONSTRUCTED UNTIL ALL PERMANENT ENTRANCES LOCATED ALONG RIGGIN RD ARE COMPLETED. ACCESS SHALL BE PROVIDED TO THE BANK AND THE PLUMBERS SUPPLY VIA THEIR ENTRANCES ON IL 162 FOR THE DURATION OF THE RIGGIN RD RECONSTRUCTION. COST OF COMPLYING WITH THIS NOTE SHALL NOT BE PAID FOR SEPARATELY, BUT WILL BE INCLUDED IN THE COST FOR 'TRAFFIC CONTROL AND PROTECTION (SPECIAL) LOCATION NO. 1'.

TEMPORARY PAVEMENT  
 BITUMINOUS CONCRETE SURFACE COURSE, SUPERPAVE, MIX 'C', N50 - 3" = 156 TON  
 AGGREGATE BASE COURSE TYPE B, 8" = 940 SQ YD



REVISIONS	
NAME	DATE

ILLINOIS DEPARTMENT OF TRANSPORTATION  
**STAGE CONSTRUCTION**  
**STAGE 1**  
**RIGGIN RD.**  
 FAP ROUTE 586  
 SECTION 60R-2, 37R-1  
 MADISON COUNTY  
 DRAWN BY:

PLOT DATE: Friday July 02, 2004 @ 8:10:53 AM