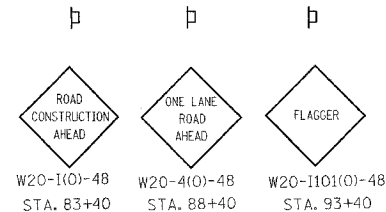
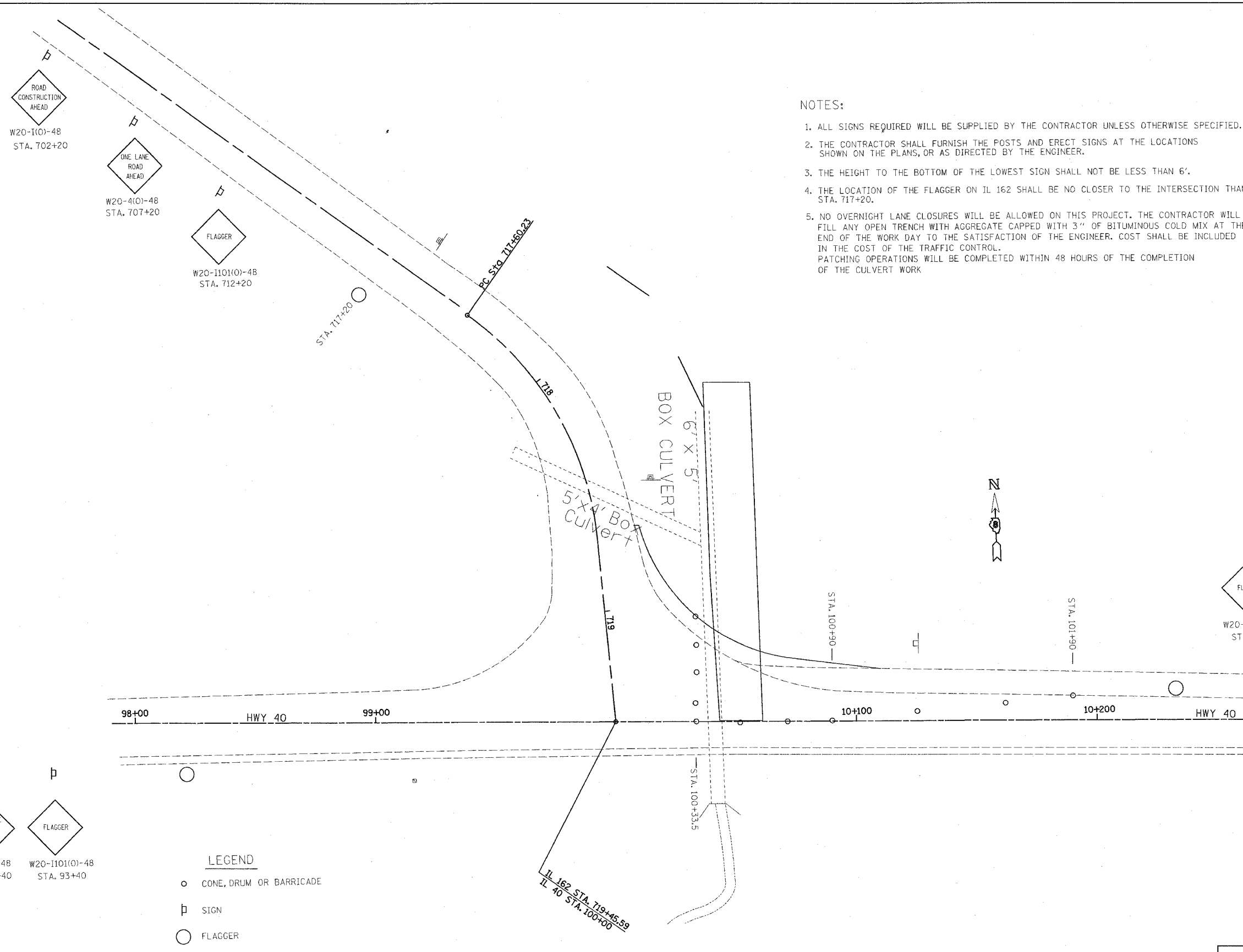


FAP ROUTE	SECTION	COUNTY	TOTAL SHEETS	SHEET NO
586	60R-2, 37R-1	MADISON	502	128
STA.	TO STA.			
CONTRACT NO.: 76301				

NOTES:

- ALL SIGNS REQUIRED WILL BE SUPPLIED BY THE CONTRACTOR UNLESS OTHERWISE SPECIFIED.
- THE CONTRACTOR SHALL FURNISH THE POSTS AND ERECT SIGNS AT THE LOCATIONS SHOWN ON THE PLANS, OR AS DIRECTED BY THE ENGINEER.
- THE HEIGHT TO THE BOTTOM OF THE LOWEST SIGN SHALL NOT BE LESS THAN 6'.
- THE LOCATION OF THE FLAGGER ON IL 162 SHALL BE NO CLOSER TO THE INTERSECTION THAN STA. 717+20.
- NO OVERNIGHT LANE CLOSURES WILL BE ALLOWED ON THIS PROJECT. THE CONTRACTOR WILL FILL ANY OPEN TRENCH WITH AGGREGATE CAPPED WITH 3" OF BITUMINOUS COLD MIX AT THE END OF THE WORK DAY TO THE SATISFACTION OF THE ENGINEER. COST SHALL BE INCLUDED IN THE COST OF THE TRAFFIC CONTROL. PATCHING OPERATIONS WILL BE COMPLETED WITHIN 48 HOURS OF THE COMPLETION OF THE CULVERT WORK.

PLAN NO.	NOTE BOOK NO.	DATE	BY



REVISIONS	
NAME	DATE

ILLINOIS DEPARTMENT OF TRANSPORTATION
**STAGE 2
 TRAFFIC CONTROL SPECIAL
 LOCATION 2**
 FAP 586
 SECTION 60R-2, 37R-1
 MADISON COUNTY
 DRAWN BY:
 PLOT DATE: Tuesday August 10, 2004 @ 9:19:22 AM

B:\19\2804
 8/10/2004 9:19:22 AM
 C:\projects\586\stage2\traffic\stage2\stage2.dgn L:\1-63
 C:\projects\586\stage2\traffic\stage2\stage2.dgn L:\1-63
 C:\projects\586\stage2\traffic\stage2\stage2.dgn L:\1-63
 C:\projects\586\stage2\traffic\stage2\stage2.dgn L:\1-63
 C:\projects\586\stage2\traffic\stage2\stage2.dgn L:\1-63