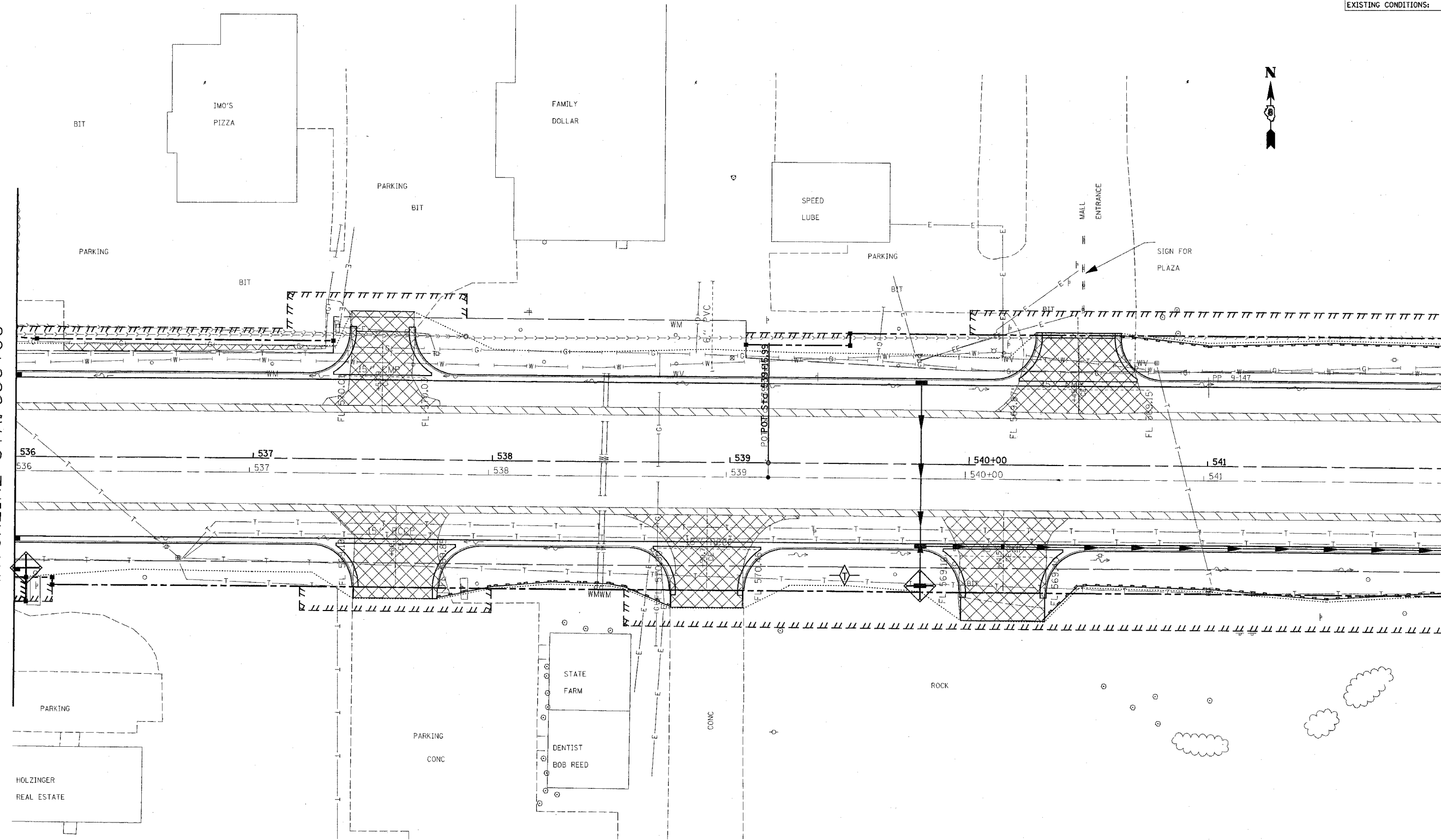


FAP ROUTE	SECTION	COUNTY	TOTAL SHEETS	SHEET NO.
586	60R-2, 37R-1	MADISON	502	137
STA. 536+00		TO STA. 342+00		
EXISTING CONDITIONS:		76301		

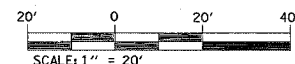
PLAN NO.	NOTED	BY	DATE

MATCHLINE STA. 536+00

MATCHLINE STA. 542+00



7/2/2004 8:30:59 AM
 Friday July 02, 2004 8:30:59 AM
 C:\projects\586\2386\2386.dwg LV:4-59
 C:\projects\586\2386\2386.dwg LV:56-59, 46-47, 50, 52, 51, 58
 C:\projects\586\2386\2386.dwg LV:2-58, 12, 14-18, 20, 22, 24-29, 37-40, 42-48, 50-55, 57-59
 C:\projects\586\2386\2386.dwg LV:2-58, 12, 14-18, 20, 22, 24-29, 37-40, 42-48, 50-55, 57-59
 C:\projects\586\2386\2386.dwg LV:2-58, 12, 14-18, 20, 22, 24-29, 37-40, 42-48, 50-55, 57-59
 C:\projects\586\2386\2386.dwg LV:2-58, 12, 14-18, 20, 22, 24-29, 37-40, 42-48, 50-55, 57-59



REVISIONS	
NAME	DATE

ILLINOIS DEPARTMENT OF TRANSPORTATION
STORM WATER POLLUTION PREVENTION PLAN
 FAP ROUTE 586
 SECTION 60R-2, 37R-1
 MADISON COUNTY

DRAWN BY:

PLOT DATE: Friday July 02, 2004 8:30:59 AM