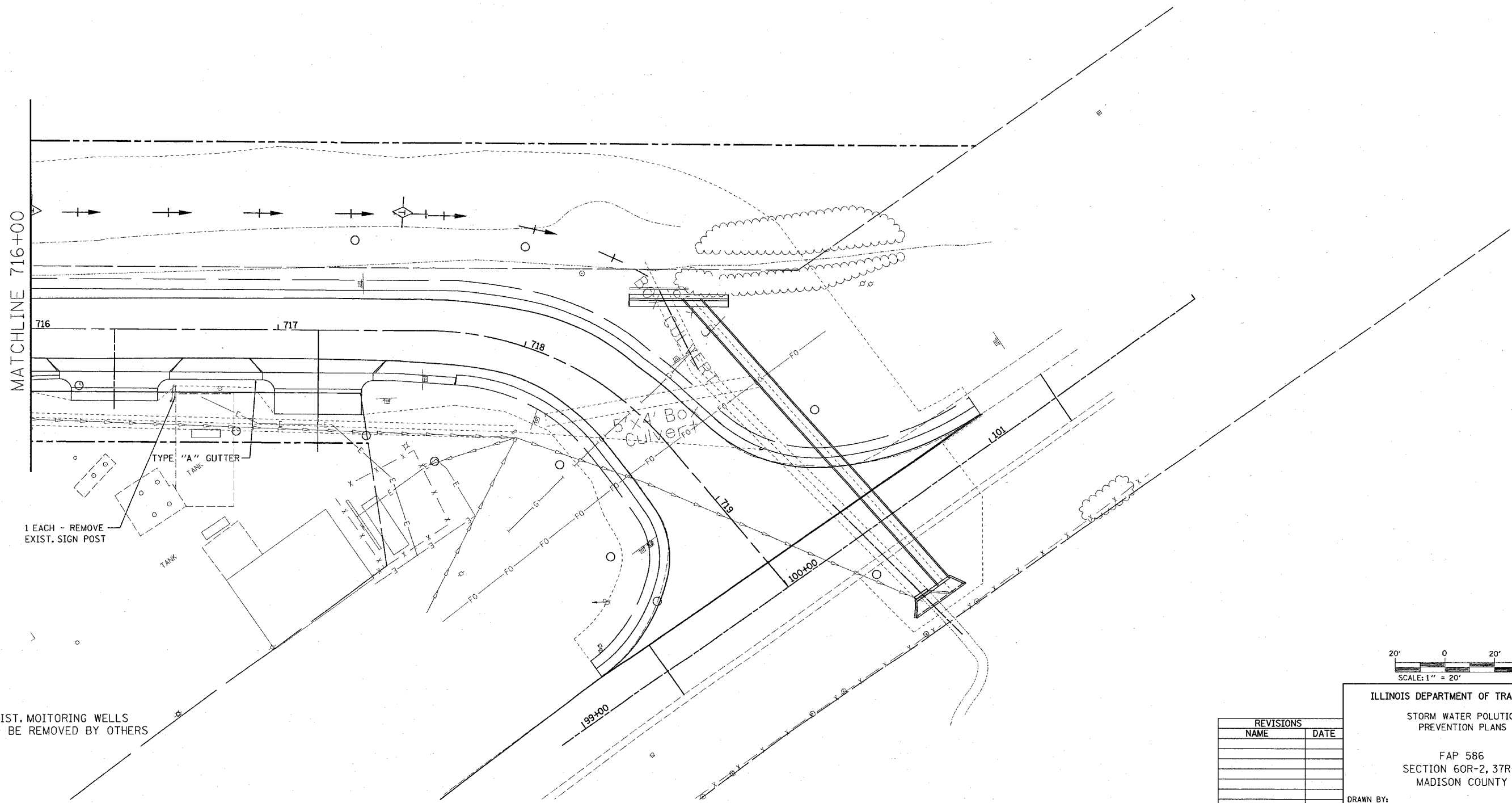


FAP ROUTE	SECTION	COUNTY	TOTAL SHEETS	SHEET NO.
586	60R-2, 37R-1	MADISON	502	164
STA. 716+00		TO STA. 719+45.59		
CONTRACT NO.: 76301				



PLAN NO.	REVISED BY DATE	BY	DATE	
			NO.	DATE



MATCHLINE 716+00

716

717

718

719

100+00

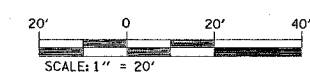
5' x 4' Box Culvert

TYPE "A" GUTTER TANK

1 EACH - REMOVE EXIST. SIGN POST

TANK

EXIST. MONITORING WELLS TO BE REMOVED BY OTHERS



ILLINOIS DEPARTMENT OF TRANSPORTATION
STORM WATER POLLUTION PREVENTION PLANS

FAP 586
SECTION 60R-2, 37R-1
MADISON COUNTY
DRAWN BY:

REVISIONS	
NAME	DATE

7/1/2004
 Thursday July 01, 2004 @ 2:36:25 PM
 c:\projects\ed6599a\plan\p1604sodgn LV1:63
 c:\projects\ed6599a\plan\p1604sodgn LV2:64
 c:\projects\ed6599a\plan\p1604sodgn LV3:65
 c:\projects\ed6599a\plan\p1604sodgn LV4:66
 c:\projects\ed6599a\plan\p1604sodgn LV5:67
 c:\projects\ed6599a\plan\p1604sodgn LV6:68
 c:\projects\ed6599a\plan\p1604sodgn LV7:69
 c:\projects\ed6599a\plan\p1604sodgn LV8:70
 c:\projects\ed6599a\plan\p1604sodgn LV9:71
 c:\projects\ed6599a\plan\p1604sodgn LV10:72
 c:\projects\ed6599a\plan\p1604sodgn LV11:73
 c:\projects\ed6599a\plan\p1604sodgn LV12:74
 c:\projects\ed6599a\plan\p1604sodgn LV13:75
 c:\projects\ed6599a\plan\p1604sodgn LV14:76
 c:\projects\ed6599a\plan\p1604sodgn LV15:77
 c:\projects\ed6599a\plan\p1604sodgn LV16:78
 c:\projects\ed6599a\plan\p1604sodgn LV17:79
 c:\projects\ed6599a\plan\p1604sodgn LV18:80
 c:\projects\ed6599a\plan\p1604sodgn LV19:81
 c:\projects\ed6599a\plan\p1604sodgn LV20:82
 c:\projects\ed6599a\plan\p1604sodgn LV21:83
 c:\projects\ed6599a\plan\p1604sodgn LV22:84
 c:\projects\ed6599a\plan\p1604sodgn LV23:85
 c:\projects\ed6599a\plan\p1604sodgn LV24:86
 c:\projects\ed6599a\plan\p1604sodgn LV25:87
 c:\projects\ed6599a\plan\p1604sodgn LV26:88
 c:\projects\ed6599a\plan\p1604sodgn LV27:89
 c:\projects\ed6599a\plan\p1604sodgn LV28:90
 c:\projects\ed6599a\plan\p1604sodgn LV29:91
 c:\projects\ed6599a\plan\p1604sodgn LV30:92
 c:\projects\ed6599a\plan\p1604sodgn LV31:93
 c:\projects\ed6599a\plan\p1604sodgn LV32:94
 c:\projects\ed6599a\plan\p1604sodgn LV33:95
 c:\projects\ed6599a\plan\p1604sodgn LV34:96
 c:\projects\ed6599a\plan\p1604sodgn LV35:97
 c:\projects\ed6599a\plan\p1604sodgn LV36:98
 c:\projects\ed6599a\plan\p1604sodgn LV37:99
 c:\projects\ed6599a\plan\p1604sodgn LV38:100
 c:\projects\ed6599a\plan\p1604sodgn LV39:101
 c:\projects\ed6599a\plan\p1604sodgn LV40:102
 c:\projects\ed6599a\plan\p1604sodgn LV41:103
 c:\projects\ed6599a\plan\p1604sodgn LV42:104
 c:\projects\ed6599a\plan\p1604sodgn LV43:105
 c:\projects\ed6599a\plan\p1604sodgn LV44:106
 c:\projects\ed6599a\plan\p1604sodgn LV45:107
 c:\projects\ed6599a\plan\p1604sodgn LV46:108
 c:\projects\ed6599a\plan\p1604sodgn LV47:109
 c:\projects\ed6599a\plan\p1604sodgn LV48:110
 c:\projects\ed6599a\plan\p1604sodgn LV49:111
 c:\projects\ed6599a\plan\p1604sodgn LV50:112
 c:\projects\ed6599a\plan\p1604sodgn LV51:113
 c:\projects\ed6599a\plan\p1604sodgn LV52:114
 c:\projects\ed6599a\plan\p1604sodgn LV53:115
 c:\projects\ed6599a\plan\p1604sodgn LV54:116
 c:\projects\ed6599a\plan\p1604sodgn LV55:117
 c:\projects\ed6599a\plan\p1604sodgn LV56:118
 c:\projects\ed6599a\plan\p1604sodgn LV57:119
 c:\projects\ed6599a\plan\p1604sodgn LV58:120
 c:\projects\ed6599a\plan\p1604sodgn LV59:121
 c:\projects\ed6599a\plan\p1604sodgn LV60:122
 c:\projects\ed6599a\plan\p1604sodgn LV61:123
 c:\projects\ed6599a\plan\p1604sodgn LV62:124
 c:\projects\ed6599a\plan\p1604sodgn LV63:125
 c:\projects\ed6599a\plan\p1604sodgn LV64:126
 c:\projects\ed6599a\plan\p1604sodgn LV65:127
 c:\projects\ed6599a\plan\p1604sodgn LV66:128
 c:\projects\ed6599a\plan\p1604sodgn LV67:129
 c:\projects\ed6599a\plan\p1604sodgn LV68:130
 c:\projects\ed6599a\plan\p1604sodgn LV69:131
 c:\projects\ed6599a\plan\p1604sodgn LV70:132
 c:\projects\ed6599a\plan\p1604sodgn LV71:133
 c:\projects\ed6599a\plan\p1604sodgn LV72:134
 c:\projects\ed6599a\plan\p1604sodgn LV73:135
 c:\projects\ed6599a\plan\p1604sodgn LV74:136
 c:\projects\ed6599a\plan\p1604sodgn LV75:137
 c:\projects\ed6599a\plan\p1604sodgn LV76:138
 c:\projects\ed6599a\plan\p1604sodgn LV77:139
 c:\projects\ed6599a\plan\p1604sodgn LV78:140
 c:\projects\ed6599a\plan\p1604sodgn LV79:141
 c:\projects\ed6599a\plan\p1604sodgn LV80:142
 c:\projects\ed6599a\plan\p1604sodgn LV81:143
 c:\projects\ed6599a\plan\p1604sodgn LV82:144
 c:\projects\ed6599a\plan\p1604sodgn LV83:145
 c:\projects\ed6599a\plan\p1604sodgn LV84:146
 c:\projects\ed6599a\plan\p1604sodgn LV85:147
 c:\projects\ed6599a\plan\p1604sodgn LV86:148
 c:\projects\ed6599a\plan\p1604sodgn LV87:149
 c:\projects\ed6599a\plan\p1604sodgn LV88:150
 c:\projects\ed6599a\plan\p1604sodgn LV89:151
 c:\projects\ed6599a\plan\p1604sodgn LV90:152
 c:\projects\ed6599a\plan\p1604sodgn LV91:153
 c:\projects\ed6599a\plan\p1604sodgn LV92:154
 c:\projects\ed6599a\plan\p1604sodgn LV93:155
 c:\projects\ed6599a\plan\p1604sodgn LV94:156
 c:\projects\ed6599a\plan\p1604sodgn LV95:157
 c:\projects\ed6599a\plan\p1604sodgn LV96:158
 c:\projects\ed6599a\plan\p1604sodgn LV97:159
 c:\projects\ed6599a\plan\p1604sodgn LV98:160
 c:\projects\ed6599a\plan\p1604sodgn LV99:161
 c:\projects\ed6599a\plan\p1604sodgn LV100:162
 c:\projects\ed6599a\plan\p1604sodgn LV101:163
 c:\projects\ed6599a\plan\p1604sodgn LV102:164