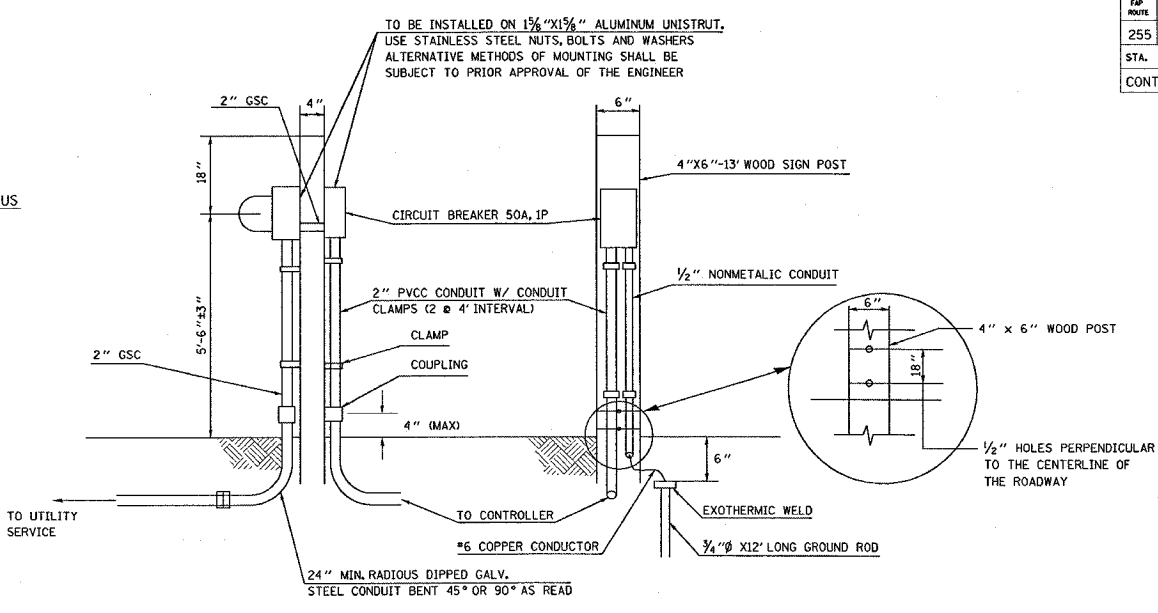
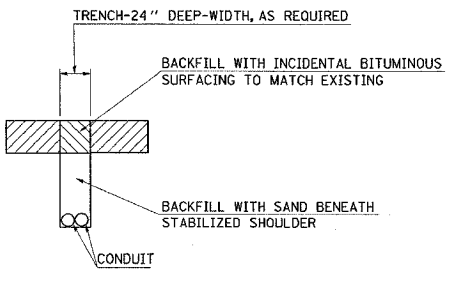
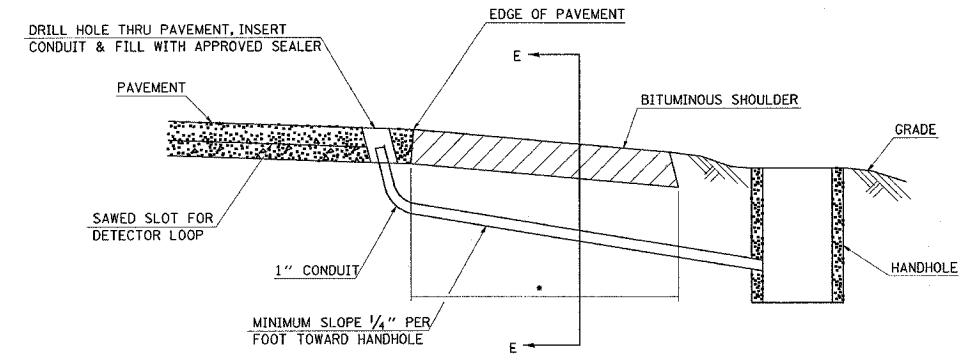


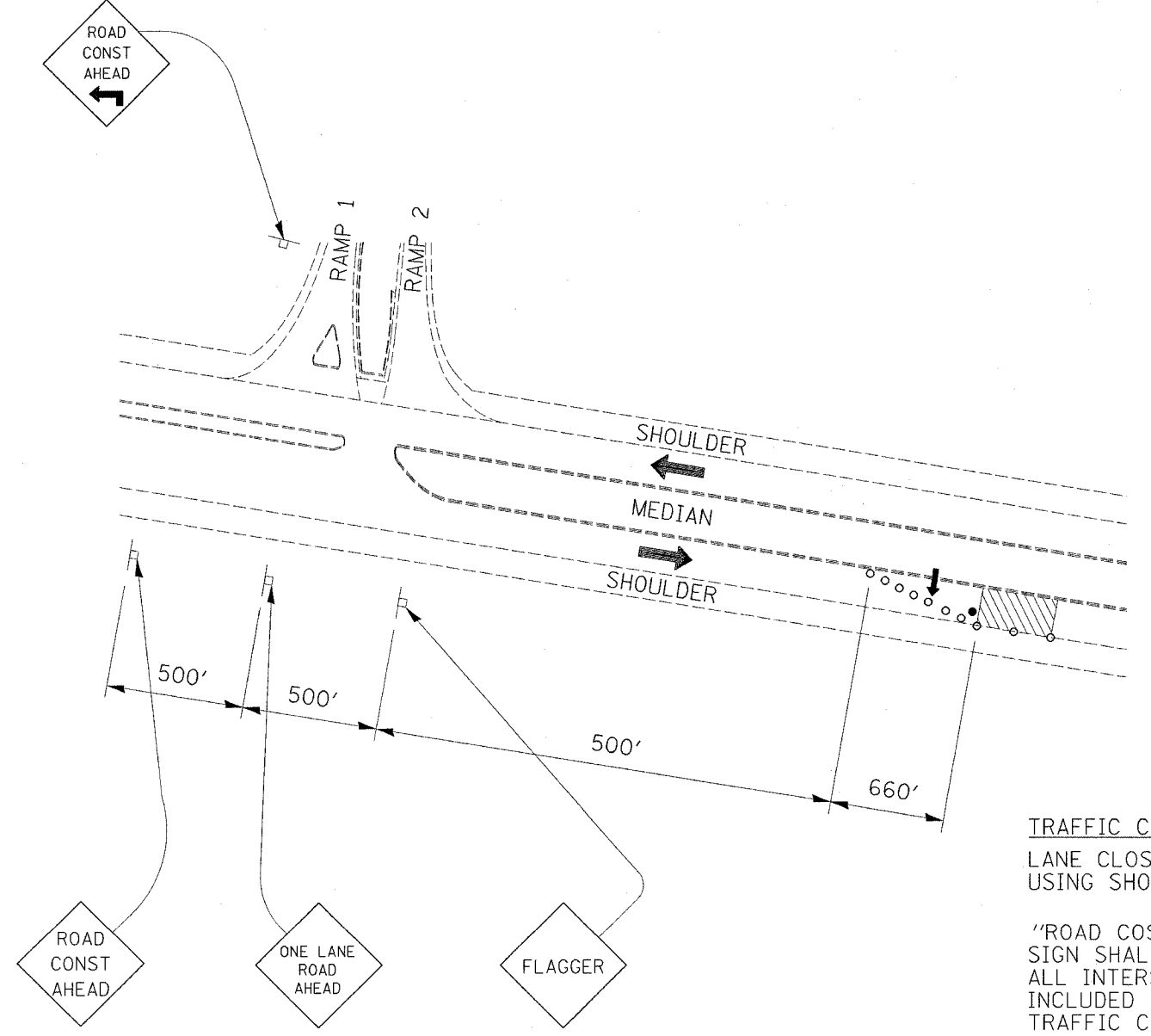
FAP ROUTE	SECTION	COUNTY	TOTAL SHEETS	SHEET NO.
255	60-8-1TS	MADISON	11	4
STA.		TO STA.		
CONTRACT NO.: 76799				



• LIMITS OF "TRENCH AND BACKFILL FOR ELECTRICAL WORK (SPECIAL)"

DETAIL - A
TRENCH AND BACKFILL FOR ELECTRICAL WORK (SPECIAL)
(NO SCALE)

DETAIL - B
SERVICE INSTALLATION, TYPE A
ON WOOD SIGN POST
NOT TO SCALE



TRAFFIC CONTROL (SPECIAL)
LANE CLOSURE, 2L, 2W WITH MEDIAN,
USING SHOULDER.

"ROAD COSTRUCTION AHEAD"
SIGN SHALL BE REQUIRED ON
ALL INTERSECTING ROADS AND
INCLUDED IN COST OF
TRAFFIC CONTROL (SPECIAL).

- ➔ ARROW BOARD
- FLAGGER W/ TRAFFIC CONTROL SIGN

REVISIONS	
NAME	DATE

ILLINOIS DEPARTMENT OF TRANSPORTATION

DETAILS

FAI ROUTE 255
SECTION 60-8-1TS
MADISON COUNTY

DRAWN BY:

PLLOT DATE: Monday September 27, 2004 @ 11:01:31 AM

PLAN	DATE
BY	
DESIGNED	
CHECKED	
APPROVED	
NO.	

Monday, September 27, 2004 @ 11:01:31 AM
 C:\p\j\255\255a\900\900a\electrical\900a.dwg JLE
 C:\p\j\255\255a\900\900a\electrical\900a.dwg JLE
 C:\p\j\255\255a\900\900a\electrical\900a.dwg JLE
 C:\p\j\255\255a\900\900a\electrical\900a.dwg JLE