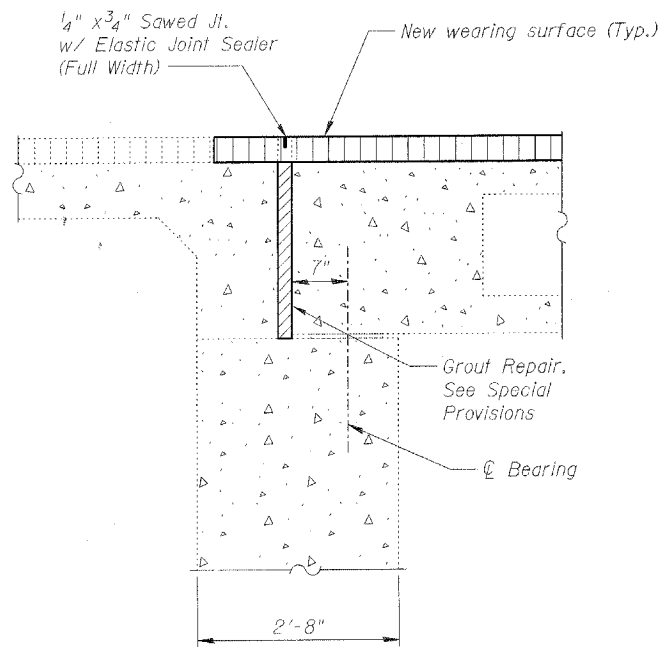


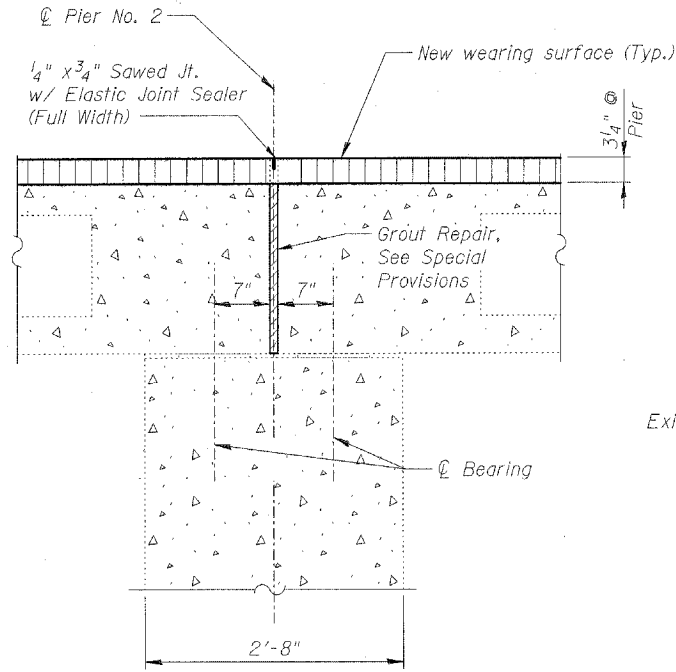
STATE OF ILLINOIS
DEPARTMENT OF TRANSPORTATION

ROUTE NO.	SECTION	COUNTY	TOTAL SHEETS	SHEET NO.	SHEET NO. 2
F.A.P. Route 314	110 BR-1	MADISON	10	8	4 SHEETS
FED. ROAD DIST. NO. 7	ILLINOIS	FED. AID PROJECT			

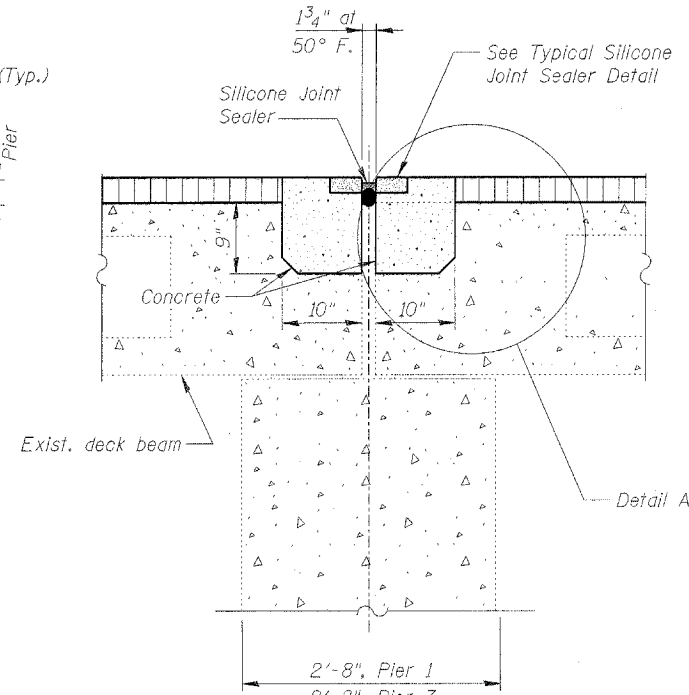
CONTRACT NO: 76865



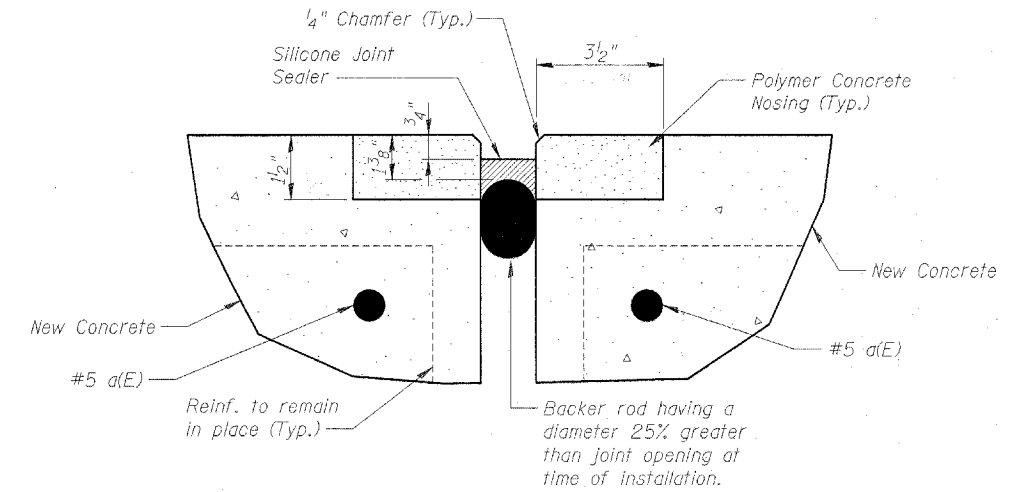
SECTION THRU NORTH
AND SOUTH ABUTMENT
AT ROADWAY



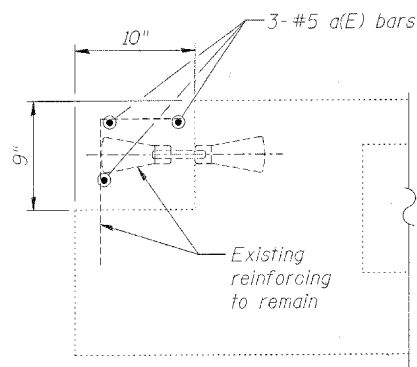
SECTION THRU PIER 2



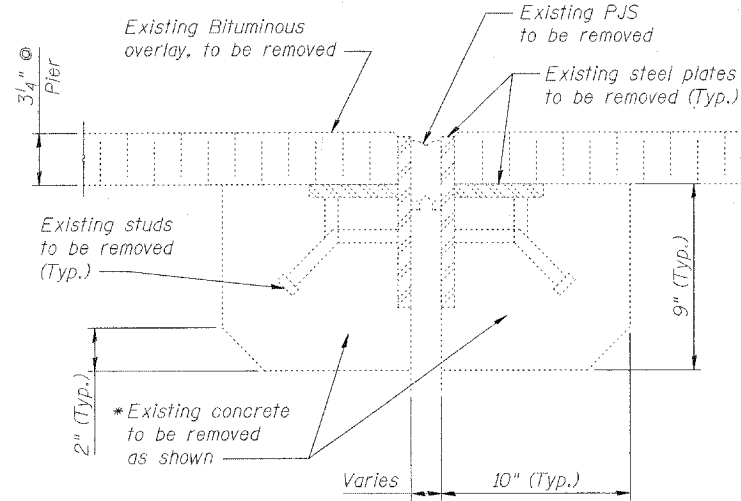
SILICONE JOINT SEALER
WITH POLYMER CONCRETE
NOSING AT PIER 1
(Pier 3 similar)



TYPICAL SILICONE JOINT
SEALER DETAIL

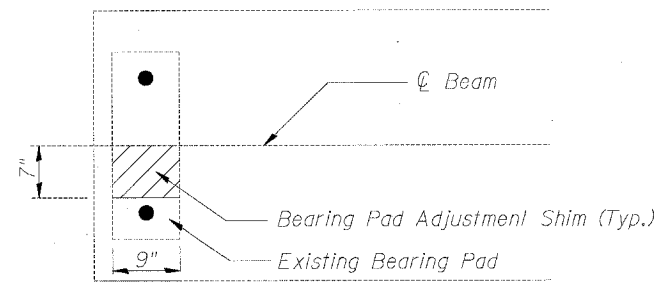


DETAIL A



SECTION THRU EXISTING EXPANSION JOINT AT PIERS 1 & 3

(Cost for removal of studs, steel plates, PJS and bituminous to be included in the cost of Concrete Removal)



Note:
Existing reinforcing bars and coil loops located within the blockout areas are to be cleaned and incorporated into new construction except as noted.

*Contractor should exercise extreme care during this concrete removal to ensure that PPC deck beam is not damaged.

BILL OF MATERIAL

BAR	NO.	SIZE	LENGTH	SHAPE
a (E)	24	5	16'-4 1/2"	—
Concrete Removal			Cu. Yd.	3.0
Concrete Superstructure			Cu. Yd.	3.9
Reinf Bars, Epoxy Ctd			Lbs.	410
Grout Repair			Foot	99
Silicone Joint Sealer			Foot	66
Polymer Concrete			Cu. Ft.	4.8

DESIGNED	KPH
CHECKED	DLS
DRAWN	KPH
CHECKED	DLS

HORNER & SHIFRIN, INC.
ENGINEERS ■ ARCHITECTS ■ PLANNERS
5200 OAKLAND AVENUE • ST. LOUIS, MISSOURI
141 MARKET PLACE, STE. 208 • FAIRVIEW HEIGHTS, ILLINOIS

SUPERSTRUCTURE DETAILS
ILLINOIS ROUTE 4
F.A.P. ROUTE 314
SECTION 110 BR-1
MADISON COUNTY
SN 060-0109