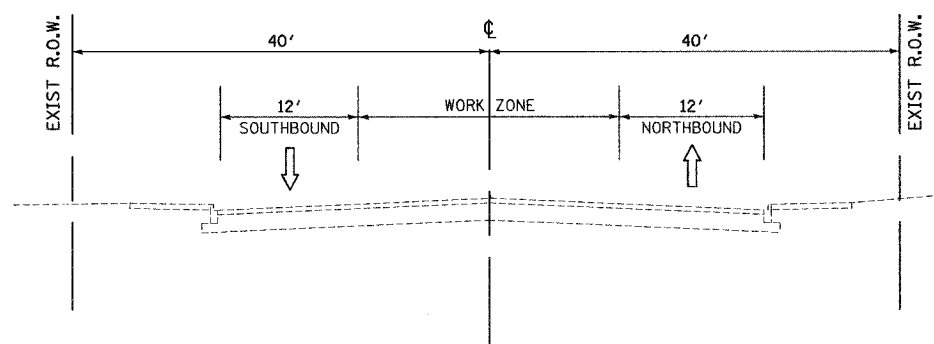
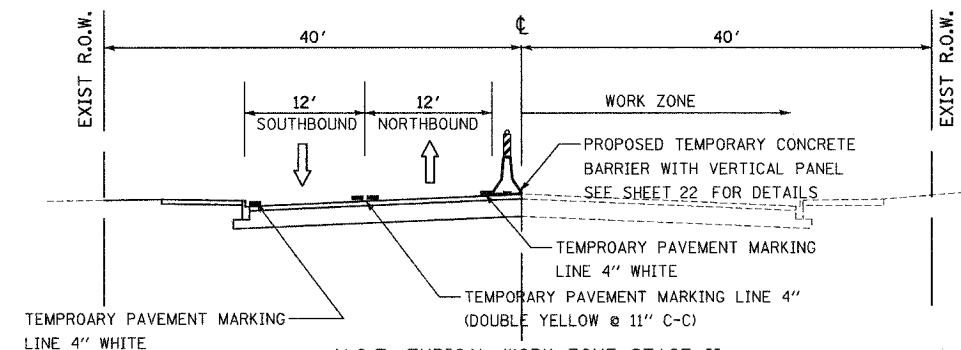


GENERAL NOTES

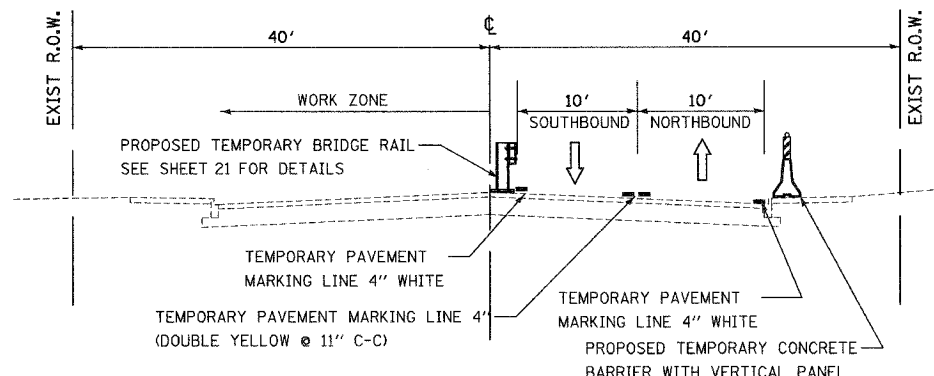
- THE CONTRACTOR SHALL MAINTAIN A MINIMUM 10 FEET CLEAR WIDTH ROADWAY IN EACH DIRECTION FOR TWO-WAY TRAFFIC FLOW. THE NUMBER OF TRAFFIC AND TURN LANES SHALL BE IN ACCORDANCE WITH THE CONSTRUCTION STAGING NOTES, TYPICAL SECTIONS AND PLAN SHEETS.
- INGRESS AND EGRESS TO DRIVEWAYS SHALL BE MAINTAINED AS SHOWN ON THE PLANS AND/OR AS DIRECTED BY THE ENGINEER. A QUANTITY OF AGGREGATE SURFACE COURSE, TYPE B FOR (COMMERCIAL/RESIDENTIAL) TEMPORARY ACCESS, HAS BEEN INCLUDED IN THE CONTRACT FOR DRIVEWAY AND SIDE STREET ACCESS. THIS WORK SHALL BE IN ACCORDANCE WITH SECTION 402 OF THE STANDARD SPECIFICATIONS.
- CONSTRUCTION OPERATIONS THROUGH COMMERCIAL DRIVEWAYS SHALL BE STAGED IN A MANNER THAT WILL ELIMINATE ONLY ONE ACCESS POINT AT A TIME. THE REMAINING ACCESS POINTS SHALL BE MAINTAINED WITH A TEMPORARY SURFACE, AS DIRECTED BY THE ENGINEER, TO PROVIDE SAFE PASSAGE TO DELIVERY TRUCKS AND CUSTOMERS.
- THE CONTRACTOR SHALL MAINTAIN TRAFFIC IN ACCORDANCE WITH THE SPECIAL PROVISIONS, STATE STANDARDS, STANDARD SPECIFICATIONS, AND AS DIRECTED BY THE ENGINEER.
- THE CONTRACTOR SHALL MAINTAIN 24 HOUR ACCESS TO PRIVATE PROPERTIES FOR EMERGENCY VEHICLES AT ALL TIMES.
- SIDEWALK ACCESS SHALL BE MAINTAINED ON ONE SIDE OF THE STREET AT ALL TIMES. CLOSED SIDEWALKS SHALL BE APPROPRIATELY BARRICADED. USE STANDARD 701801-03.
- THE ENGINEER SHALL BE INFORMED 48 HOURS IN ADVANCE OF ANY CHANGE IN CONSTRUCTION STAGING.
- TYPE II BARRICADES SHALL BE EQUIPPED WITH MONO-DIRECTIONAL STEADY BURN LIGHTS AND SHALL BE PLACED AT 50 FOOT INTERVALS ALONG THE PROPOSED WORK ZONE AND AT 25 FOOT INTERVALS WITHIN TAPER SECTIONS AS INDICATED ON THE PLANS OR AS DIRECTED BY THE ENGINEER.
- TYPE II BARRICADES, 2 FEET IN WIDTH, SHALL BE UTILIZED DURING ALL STAGES OF TRAFFIC CONTROL.
- THE CONTRACTOR SHALL BE REQUIRED TO REMOVE ALL EXISTING PAVEMENT MARKINGS WHICH CONFLICT WITH THE DESIGNATED TRAFFIC CONTROL PLAN. THIS WORK SHALL NOT BE PAID FOR AS PAVEMENT MARKING REMOVAL BUT SHALL BE INCLUDED IN THE COST OF TRAFFIC CONTROL AND PROTECTION.
- THE CONTRACTOR SHALL BE RESPONSIBLE FOR ENSURING DRAINAGE OF THE ROADWAY DURING ALL STAGES OF CONSTRUCTION. THIS WORK SHALL BE INCLUDED IN THE COST OF TRAFFIC CONTROL AND PROTECTION.
- ALL CONFLICTING TRAFFIC SIGNS SHALL BE COVERED AS DIRECTED BY THE ENGINEER. THIS SHALL BE INCLUDED TO THE COST OF TRAFFIC CONTROL AND PROTECTION.



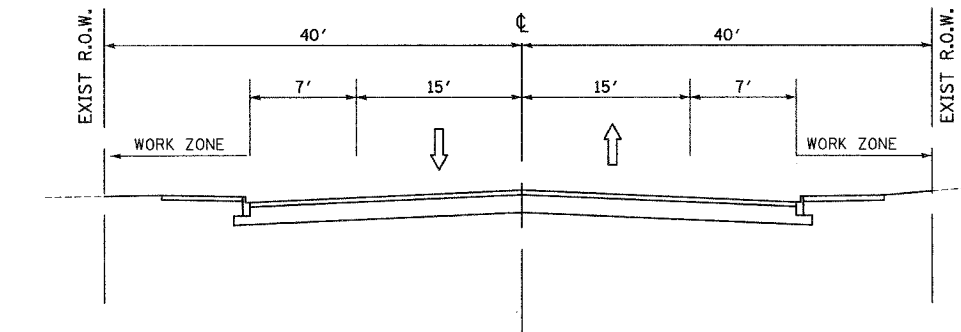
M.O.T. TYPICAL WORK ZONE PRE-STAGE
ASBURY AVE
STA 102+87 TO STA. 103+53 BRIDGE OMISSION



M.O.T. TYPICAL WORK ZONE STAGE II
ASBURY AVE
STA 102+87 TO STA. 103+53 BRIDGE OMISSION



M.O.T. TYPICAL WORK ZONE STAGE I
ASBURY AVE
STA 102+87 TO STA. 103+53 BRIDGE OMISSION



M.O.T. TYPICAL WORK ZONE STAGE III
ASBURY AVE
STA 102+87 TO STA. 103+53 BRIDGE OMISSION

SUGGESTED CONSTRUCTION STAGING

PRE-STAGE

INSTALL TEMPORARY CONCRETE BARRIER WITH VERTICAL PANELS ALONG EAST SIDEWALK AT THE BACK OF CURB.

INSTALL WATER VALVES AND VAULTS AND SUFFICIENT 8" WATER MAIN TO EXTEND INTO THE STAGE I WORK ZONE. REMOVE EXISTING SANITARY MANHOLE AND LINE AS SHOWN ON THE PLANS AND INSTALL PROPOSED SANITARY MANHOLES. USE STATE STANDARD 701602 FOR MAINTENANCE OF TRAFFIC

INSTALL TEMPORARY BRIDGE RAIL AS SHOWN ON THE STAGE I MAINTENANCE OF TRAFFIC PLAN. USE STATE STANDARD 701602 FOR MAINTENANCE OF TRAFFIC

INSTALL TEMPORARY 10 FOOT CHAIN LINK FENCE WITH SCREENING ON BOTH SIDES OF THE RAILROAD TRACKS

COORDINATE WITH UTILITY COMPANIES TO RELOCATE THEIR FACILITIES TO TEMPORARY LOCATIONS

STAGE I

THE WEST SIDE OF ASBURY AVENUE WILL BE RECONSTRUCTED BETWEEN STATIONS 101+00 AND 105+50.

TRAFFIC

DURING STAGE I CONSTRUCTION, CLOSE THE WEST HALF OF ASBURY AVENUE AS SHOWN ON THE TYPICAL SECTION AND STAGE I MAINTENANCE OF TRAFFIC PLANS. TWO-WAY TRAFFIC SHALL BE MAINTAINED. TEMPORARY PAVEMENT MARKINGS SHALL BE PLACED AS SHOWN ON THE PLANS.

CONSTRUCTION

REMOVE THE EXISTING BITUMINOUS SURFACE AND CONCRETE BASE PAVEMENT, CURB AND GUTTER, EXISTING SUB-BASE AND UNSUITABLE SOIL MATERIALS AS SHOWN ON THE PLANS AND TYPICAL SECTIONS. REMOVE EXISTING AND CONSTRUCT PROPOSED BRIDGE STRUCTURE IN ACCORDANCE WITH BRIDGE PLANS.

COORDINATE BRIDGE STRUCTURE REMOVAL TO ALLOW UTILITY COMPANIES TO KEEP CONDUITS SUPPORTED AT ALL TIMES.

INSTALL PROPOSED TEMPORARY 8" WATER MAIN AS SHOWN ON THE PLANS, TEST, AND DISCONTINUE WATER SERVICE IN EXISTING WATER MAIN. INSTALL, GRANULAR SUBBASE, BITUMINOUS BASE AND BINDER COURSES.

STAGE II

THE EAST SIDE OF ASBURY AVENUE WILL BE RECONSTRUCTED BETWEEN STATIONS 101+00 AND 105+50.

TRAFFIC

DURING STAGE II CONSTRUCTION, CLOSE THE EAST HALF OF ASBURY AVENUE AS SHOWN ON THE TYPICAL SECTION AND STAGE II MAINTENANCE OF TRAFFIC PLANS. TWO-WAY TRAFFIC SHALL BE MAINTAINED. TEMPORARY PAVEMENT MARKINGS SHALL BE PLACED AS SHOWN ON THE PLANS.

CONSTRUCTION

REMOVE THE EXISTING BITUMINOUS SURFACE AND CONCRETE BASE PAVEMENT, CURB AND GUTTER, EXISTING SUB-BASE AND UNSUITABLE SOIL MATERIALS AS SHOWN ON THE PLANS AND TYPICAL SECTIONS. REMOVE EXISTING 12" WATER MAIN AND APPURTENANCES. INSTALL PROPOSED 12" WATER MAIN AS SHOWN ON THE PLANS AND TEST. DISCONTINUE TEMPORARY WATER SERVICE IN TEMPORARY 8" WATER MAIN. REMOVE EXISTING BRIDGE STRUCTURE AND CONSTRUCT PROPOSED BRIDGE STRUCTURE IN ACCORDANCE WITH BRIDGE PLANS. INSTALL GRANULAR SUBBASE, BITUMINOUS BASE AND BINDER COURSES.

STAGE III

TRAFFIC

REMOVE STAGE II TRAFFIC CONTROL DEVICES AND UTILIZE STATE STANDARD 701606 FOR DAYTIME LANE CLOSURES TO COMPLETE LANDSCAPING ITEMS.

CONSTRUCTION

INSTALL RELOCATED SIGNS, TOPSOIL AND SALT TOLERANT SOD. INSTALL BITUMINOUS SURFACE COURSE AND PERMANENT PAVEMENT MARKINGS.

DATE: 10/28/2004 FILENAME: N:\PROJECTS\312\Design\101312.mcd\typ.dgn

REVISIONS	
NAME	DATE

Clorba Group, Inc.
CONSULTING ENGINEERS
6507 North Cumberland Avenue, Suite 402 Chicago, Illinois 60656
Tel. 773.775.4009 Fax 773.775.4014 Email chicago@clorba.com

THE CITY OF EVANSTON
ASBURY AVENUE BRIDGE IMPROVEMENTS

ASBURY AVENUE
MAINTENANCE OF TRAFFIC
TYPICAL SECTIONS

SCALE: N.T.S. DRAWN BY: DLP
DATE: OCTOBER, 2004 CHECKED BY: RAY