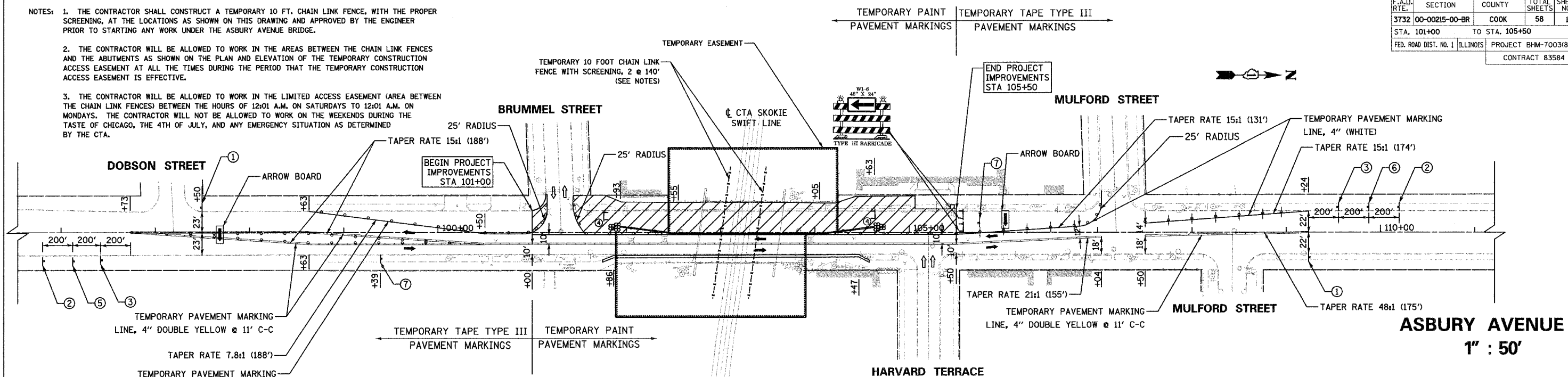
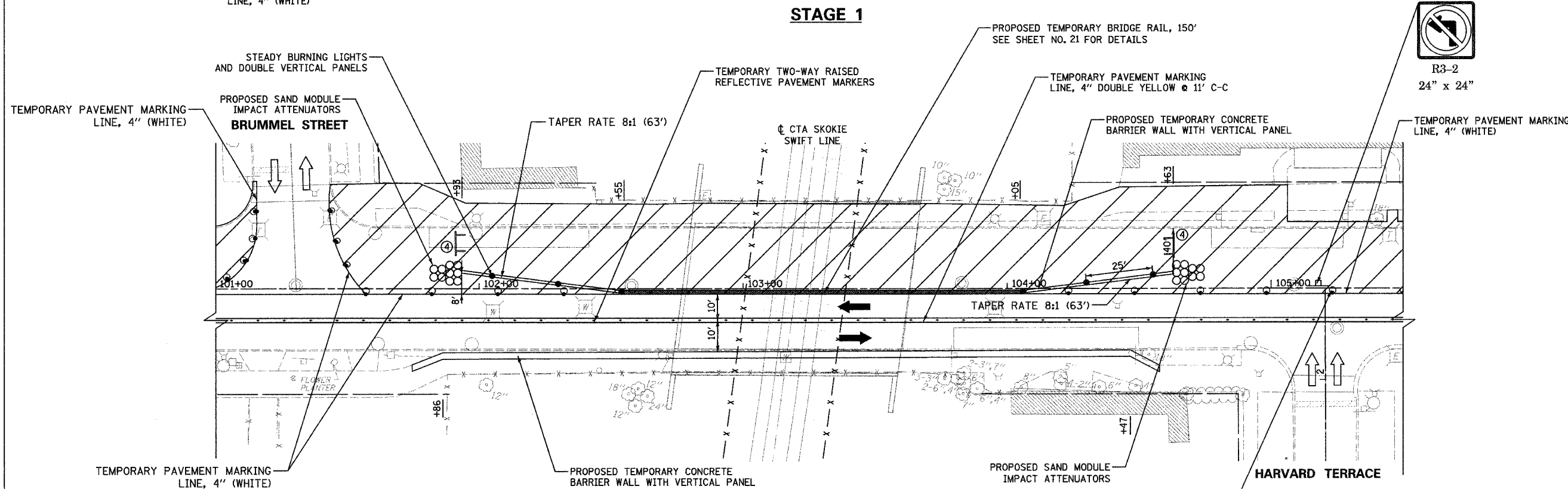


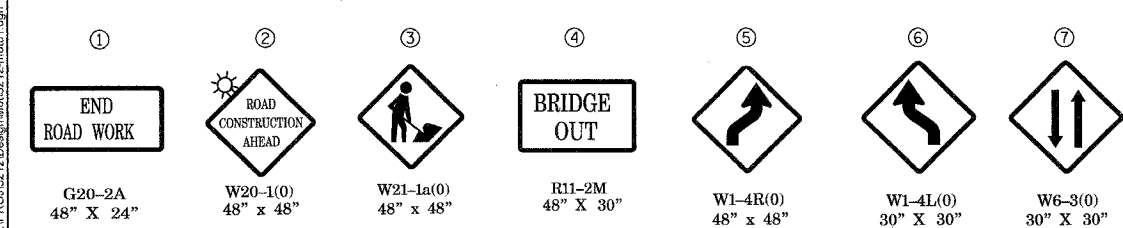
- NOTES:
1. THE CONTRACTOR SHALL CONSTRUCT A TEMPORARY 10 FT. CHAIN LINK FENCE, WITH THE PROPER SCREENING, AT THE LOCATIONS AS SHOWN ON THIS DRAWING AND APPROVED BY THE ENGINEER PRIOR TO STARTING ANY WORK UNDER THE ASBURY AVENUE BRIDGE.
  2. THE CONTRACTOR WILL BE ALLOWED TO WORK IN THE AREAS BETWEEN THE CHAIN LINK FENCES AND THE ABUTMENTS AS SHOWN ON THE PLAN AND ELEVATION OF THE TEMPORARY CONSTRUCTION ACCESS EASEMENT AT ALL THE TIMES DURING THE PERIOD THAT THE TEMPORARY CONSTRUCTION ACCESS EASEMENT IS EFFECTIVE.
  3. THE CONTRACTOR WILL BE ALLOWED TO WORK IN THE LIMITED ACCESS EASEMENT (AREA BETWEEN THE CHAIN LINK FENCES) BETWEEN THE HOURS OF 12:01 A.M. ON SATURDAYS TO 12:01 A.M. ON MONDAYS. THE CONTRACTOR WILL NOT BE ALLOWED TO WORK ON THE WEEKENDS DURING THE TASTE OF CHICAGO, THE 4TH OF JULY, AND ANY EMERGENCY SITUATION AS DETERMINED BY THE CTA.



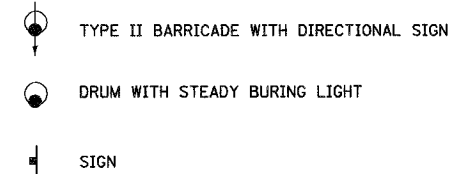
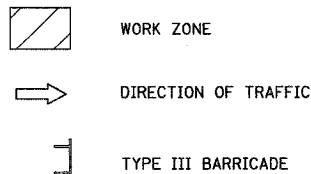
**ASBURY AVENUE**  
1" : 50'



**ASBURY AVENUE**  
1" : 20'



**STAGE 1**



REVISIONS	
NAME	DATE

**Ciorba Group, Inc.**  
CONSULTING ENGINEERS  
5507 North Cumberland Avenue, Suite 402 Chicago, Illinois 60656  
Tel. 773.775.4009 Fax 773.775.4014 Email chicao@ciorba.com

THE CITY OF EVANSTON  
ASBURY AVENUE BRIDGE IMPROVEMENTS  
  
ASBURY AVENUE  
MAINTENANCE OF TRAFFIC  
STAGE 1

1" = 50'  
SCALE: 1" = 20'  
DATE: OCTOBER, 2004  
DRAWN BY: DLP  
CHECKED BY: RAY

DATE: 10/29/04  
FILENAME: N:\PROJ\3212\Design\A013212.mcd01.dgn