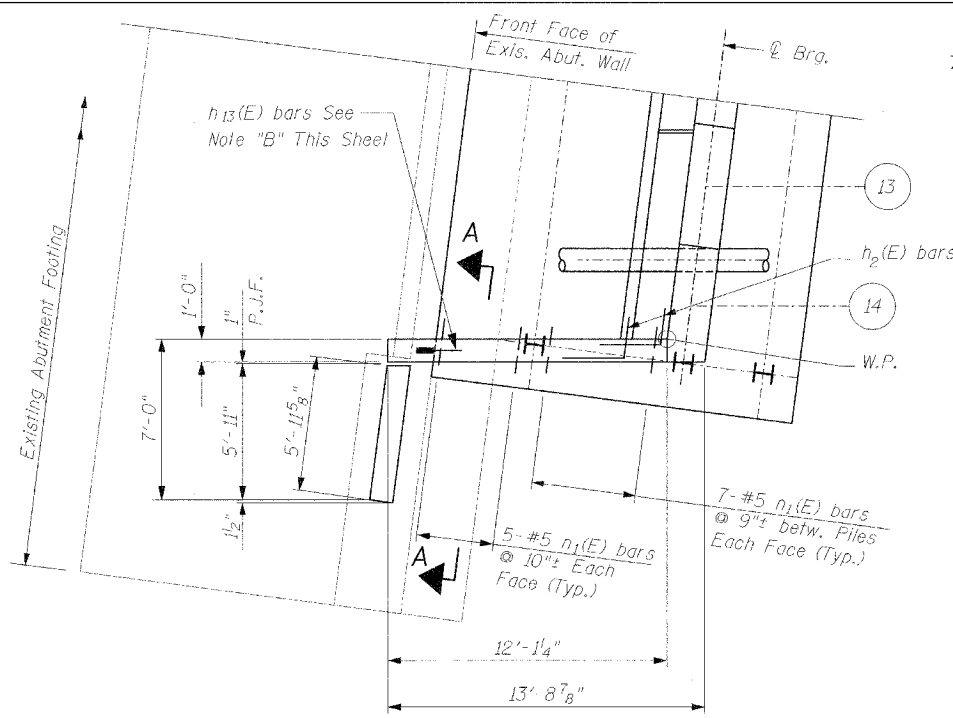
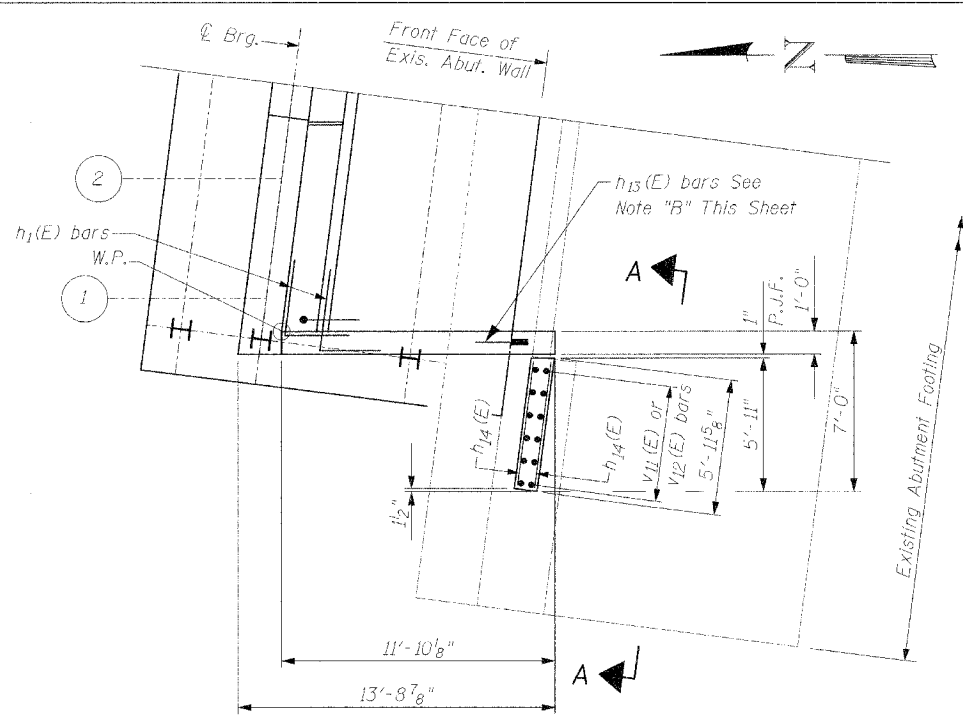


F.A.U. RTE.	SECTION	COUNTY	TOTAL SHEETS	SHEET NO.
3732	00-00125-00-BR	COOK	58	39
STA. 102+57.23		TO STA. 103+82.77		
FED. ROAD DIST. NO.	ILLINOIS	PROJECT	BHM-700318021	
Sheet S-22 of S-28		CONTRACT 83584		

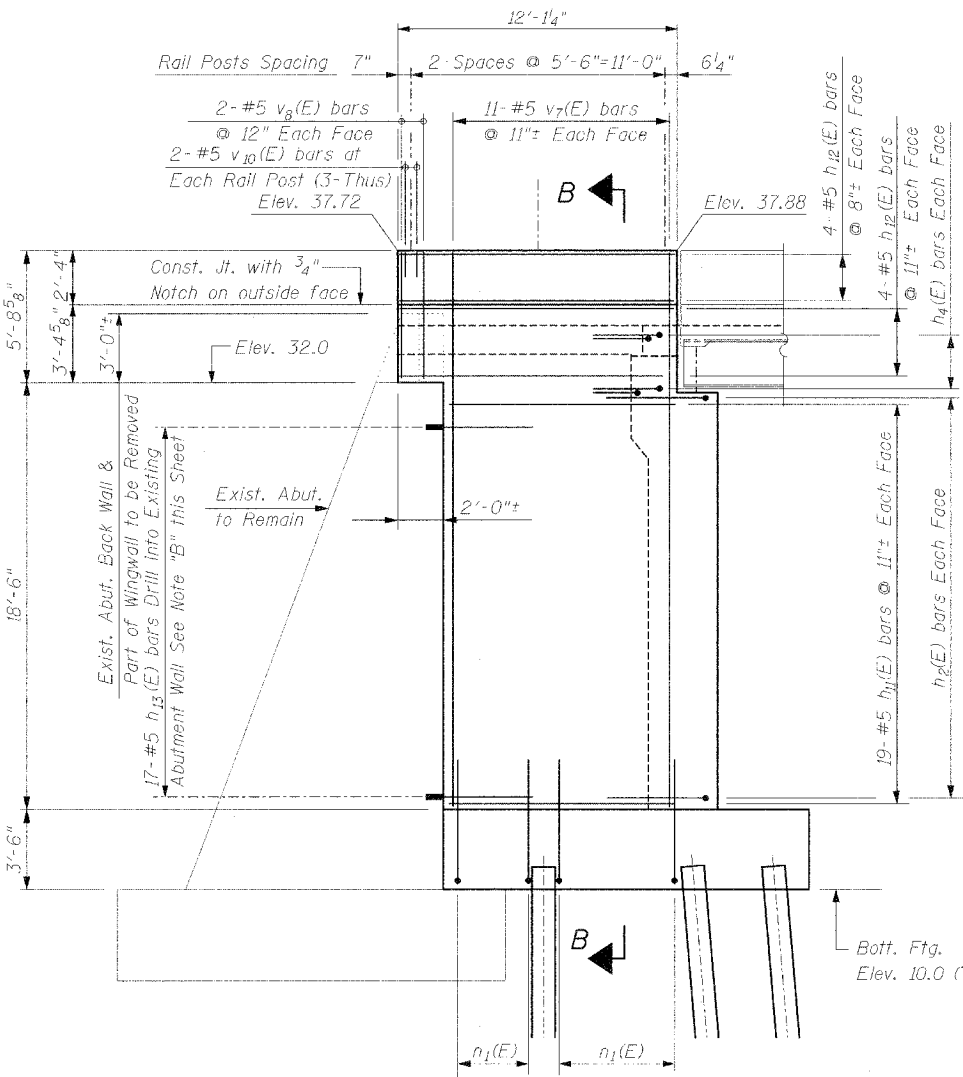


SOUTHEAST WINGWALL PLAN

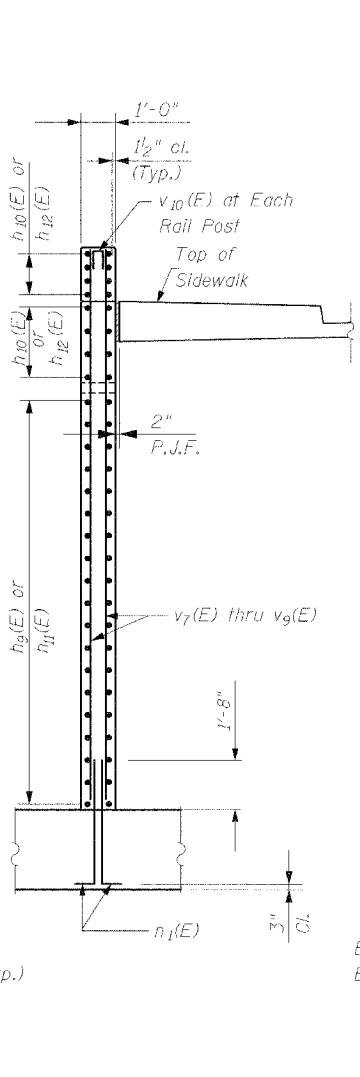


SOUTHWEST WINGWALL PLAN

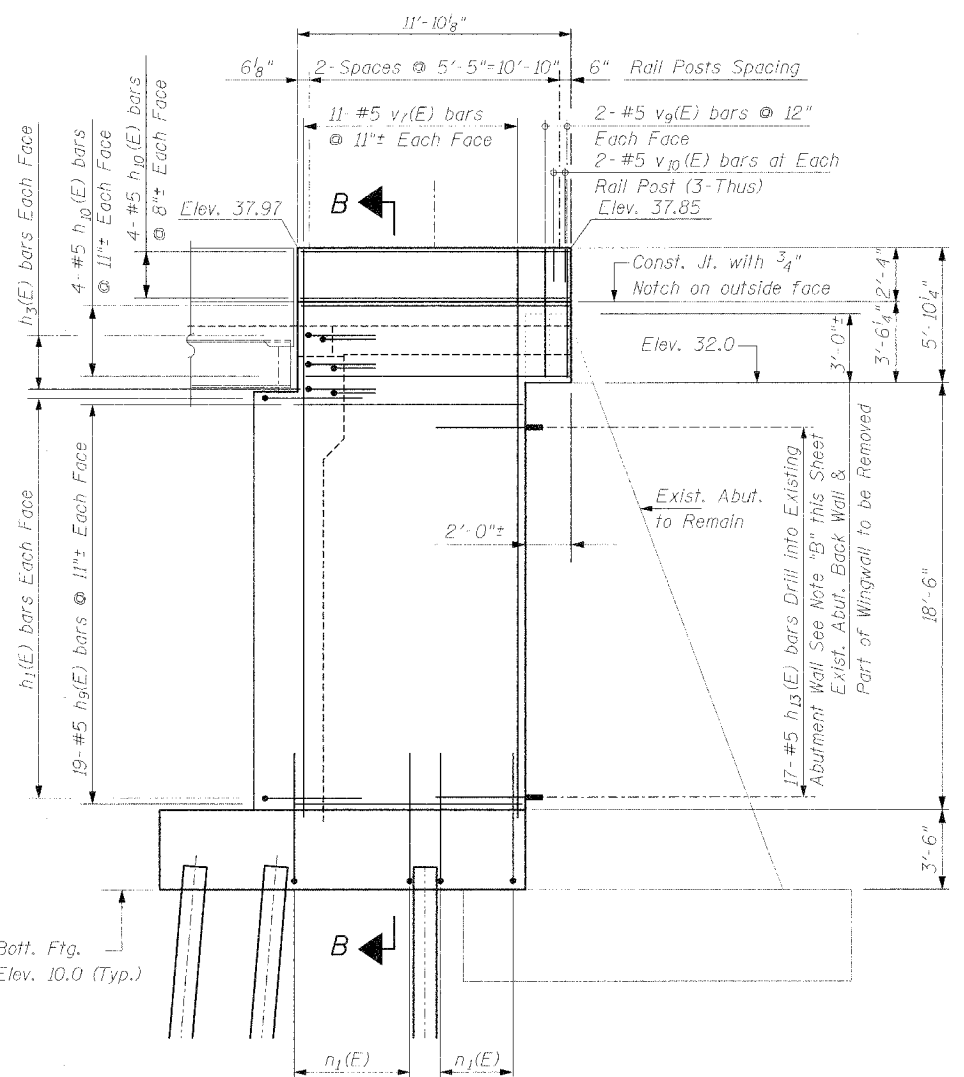
Note "A": Existing vertical bars to remain in place, blast clean and lap with new vertical bars. Horizontal bars shall be removed.
 Note "B": Epoxy grout h13(E) & v12(E) bars in 9" minimum drilled holes according to Section 584 of the Standard Specifications.



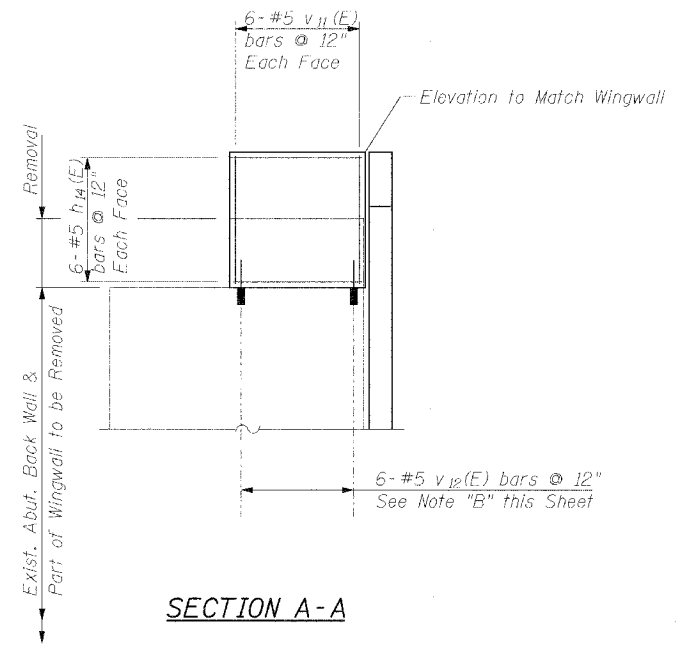
SOUTHEAST WINGWALL ELEVATION
(Looking West)



SECTION B-B



SOUTHWEST WINGWALL ELEVATION
(Looking East)



SECTION A-A

Reinforcement bars designated (E) shall be epoxy coated.
 For details of Bar Splicers, see Sheet S-27.

DATE: 10/29/2004
 FILENAME: N:\PROJ\3212\Design\Structural\3212-S-20-S21-S22-S-Abut.dgn

REVISIONS	
NAME	DATE

Clorba Group, Inc.
 CONSULTING ENGINEERS
 607 NORTH CUMBERLAND AVENUE • CHICAGO, ILLINOIS 60666 • (773) 775-0900

CITY OF EVANSTON, ILLINOIS
 SOUTH ABUTMENT WINGWALLS DETAIL
 ASBURY AVENUE OVER CTA YELLOW LINE
 SECTION 00-00215-00-BR
 COOK COUNTY
 STA. 103+20.00
 STRUCTURE NO. 016-6959

SCALE: NONE
 DATE: OCTOBER 2004
 FILE: 3212

DRAWN BY: IMG
 CHECKED BY: SCD