

**ABUTMENT  
BILL OF MATERIAL**

Bar No.	Size	Length	Shape
h1(E)	#5	35'-9"	
h2(E)	#5	7'-3"	J
h3(E)	#5	7'-3"	L
h4(E)	#5	6'-2"	J
h5(E)	#5	6'-2"	L
h6(E)	#5	15'-4"	
h7(E)	#5	2'-5"	J
h8(E)	#5	9'-7"	
h9(E)	#5	9'-6"	
h10(E)	#5	11'-7"	
h11(E)	#5	9'-9"	
h12(E)	#5	11'-10"	
h13(E)	#5	3'-0"	
h14(E)	#5	5'-8"	
h15(E)	#5	3'-8"	
h16(E)	#5	8'-4"	
h17(E)	#5	7'-7"	
n(E)	#10	10'-10"	J
n1(E)	#5	5'-8"	J
f(E)	#9	16'-8"	
f1(E)	#8	15'-5"	
v(E)	#7	17'-9"	
v1(E)	#4	17'-9"	
v2(E)	#5	9'-7"	J
v3(E)	#5	3'-0"	
v4(E)	#5	3'-1"	
v5(E)	#5	2'-7"	
v6(E)	#5	4'-6"	
v7(F)	#5	23'-11"	
v8(E)	#5	5'-5"	
v9(E)	#5	5'-7"	
v10(E)	#5	2'-0"	J
v11(E)	#5	5'-5"	
v12(E)	#5	2'-9"	
v13(E)	#5	18'-11"	
v14(E)	#5	15'-9"	
v15(E)	#4	4'-6"	J
w(E)	#5	37'-8"	
Porous Granular Embankment	Cu. Yd.	425	
Structure Excavation	Cu. Yd.	196	
Concrete Structures	Cu. Yd.	341.4	
Reinforcement Bars, Epoxy Coated	Pound	30,640	
Furnishing Steel Piles HP 12x53	Foot	2,622	
Driving Steel Piles	Each	2,622	
Bar Splicers	Each	154	

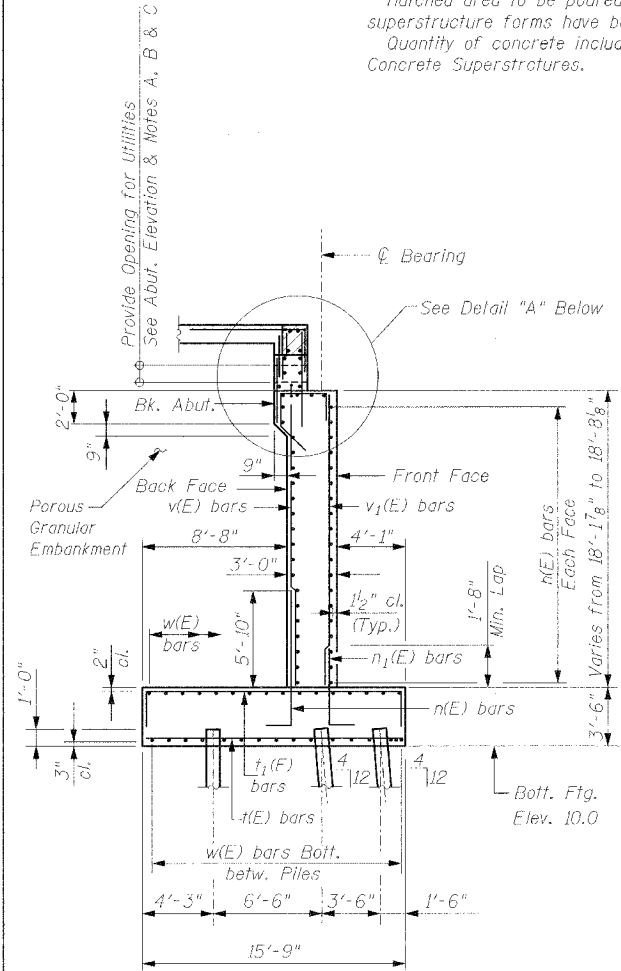
Reinforcement bars designated (E) shall be epoxy coated.  
For details of Bar Splicers, see sheet S-27. Minimum lap 1'-8" for #5 bars & 5'-10" for #10 bars.



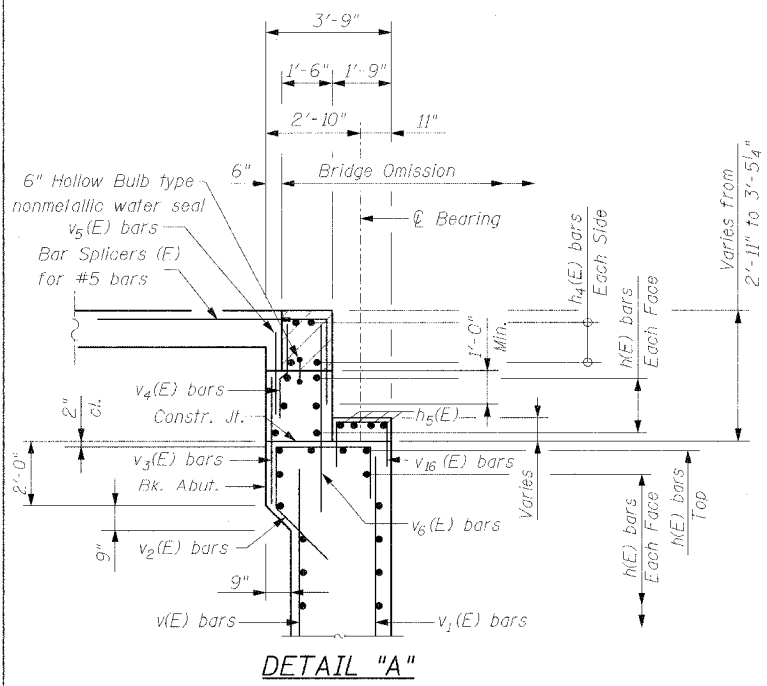
CITY OF EVANSTON, ILLINOIS  
NORTH ABUTMENT ELEVATION AND DETAILS  
ASBURY AVENUE OVER CTA YELLOW LINE  
SECTION 00-00215-00-BR  
COOK COUNTY  
STA. 103+20.00  
STRUCTURE NO. 016-6959

SCALE: NONE  
DATE: OCTOBER 2004  
FILE: 3212  
DRAWN BY: IMG  
CHECKED BY: SCD

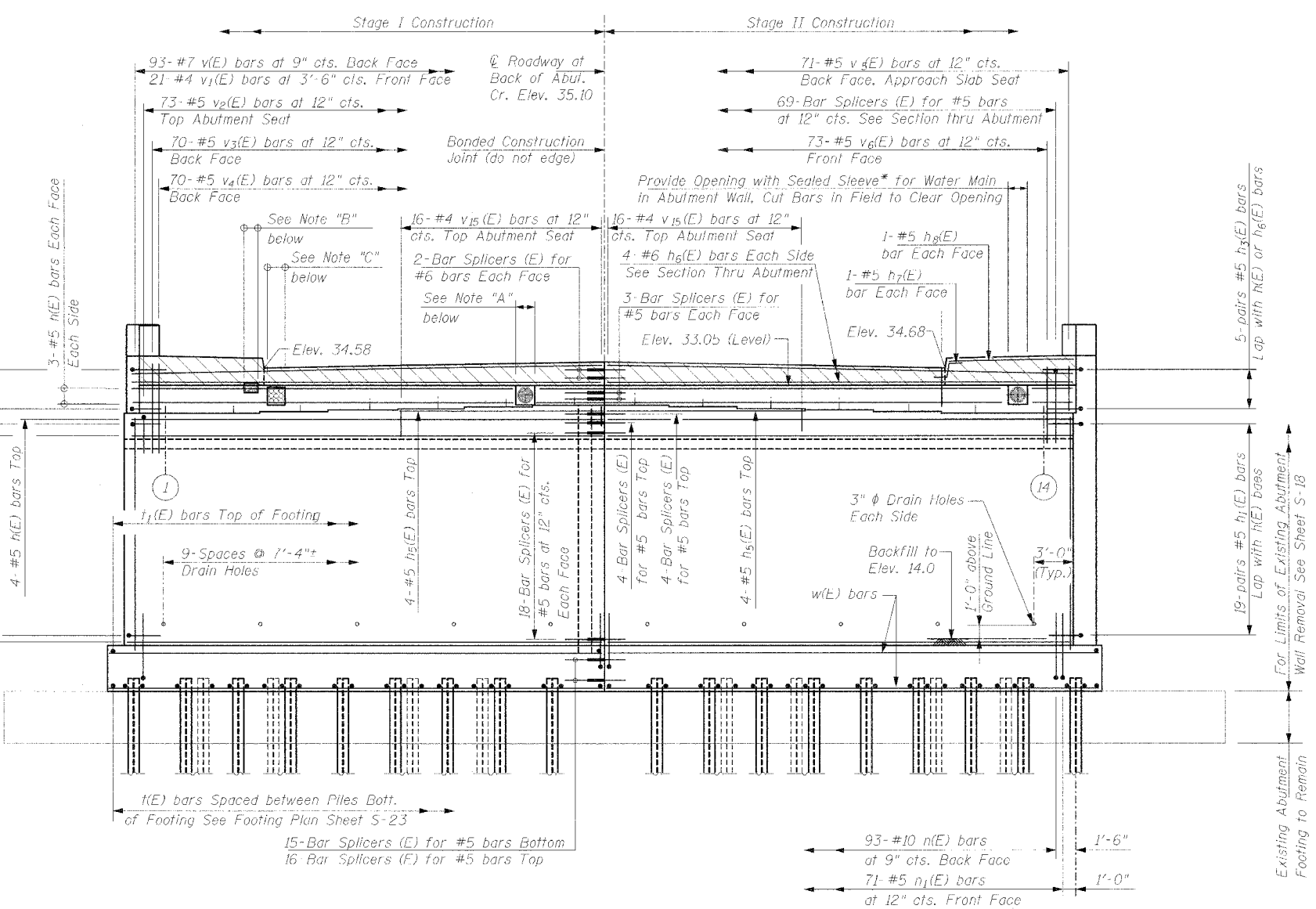
Notes:  
Space reinforcement in cap to miss anchor bolts.  
Reinforcement bars designated (E) shall be epoxy coated.  
Pour steps monolithically with cap.  
Hatched area to be poured after superstructure forms have been removed.  
Quantity of concrete included with Concrete Superstructures.



**SECTION THRU ABUTMENT**



**DETAIL "A"**



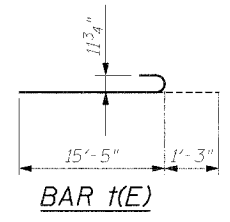
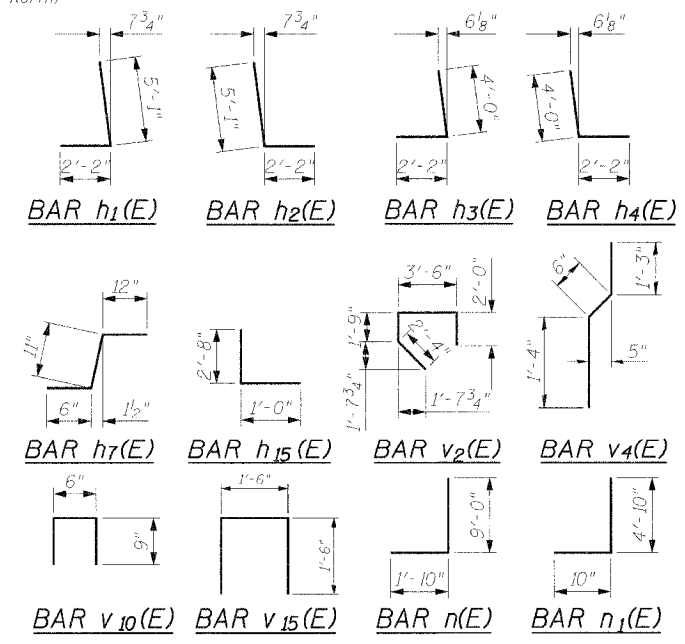
**ELEVATION  
(Looking North)**

\* See "Water Main 12", Suspended" Special Provision. Costs of Sealed Sleeve Included in Pay Item "Water Main 12", Suspended".

**BRIDGE SEAT ELEVATIONS**

Beam	Elevation
1	31.66
2	31.66
3	31.78
4	31.90
5	32.00
6	32.09
7	32.18
8	32.18
9	32.11
10	32.04
11	31.95
12	31.85
13	31.74
14	31.74

\*\*\*Shim R required



REVISIONS	
NAME	DATE

DATE: 10/8/2004  
FILENAME: N:\PROJ\3212\Design\Structural\3212-S-28-S24-S25-N-Abut.dgn