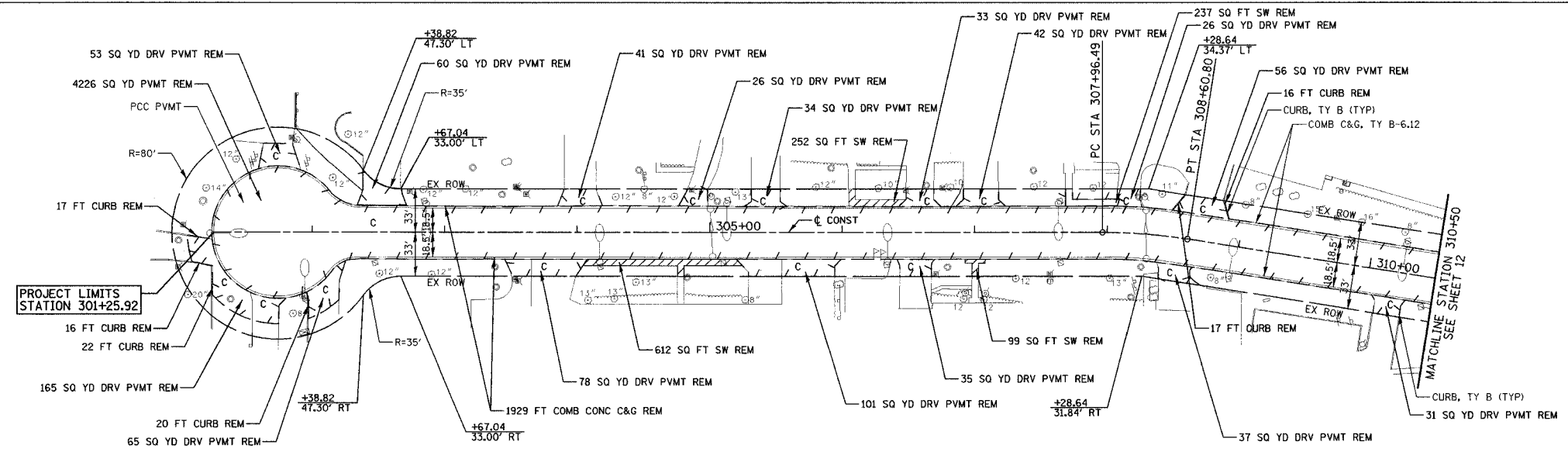
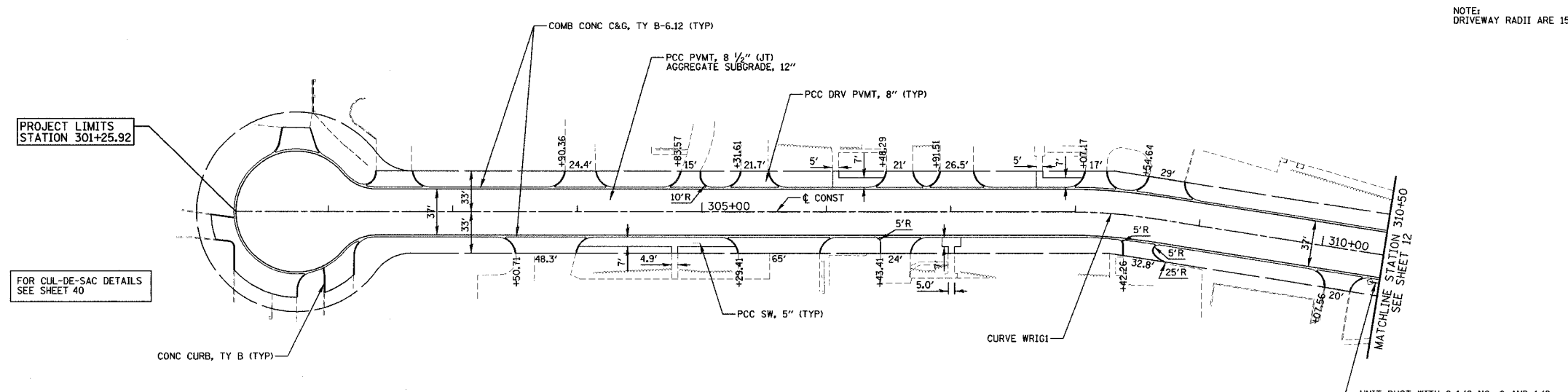


FAU	SECTION	COUNTY	TOTAL SHEETS	SHEET NO.
2667	02-00165-00-RP	DUPAGE	87	17
STA. 301+25.92		TO STA. 310+50		
FED. ROAD DIST. NO. 7 ILLINOIS FED. AID PROJECT				
CONTRACT NO. 83768				



EXISTING VIEW



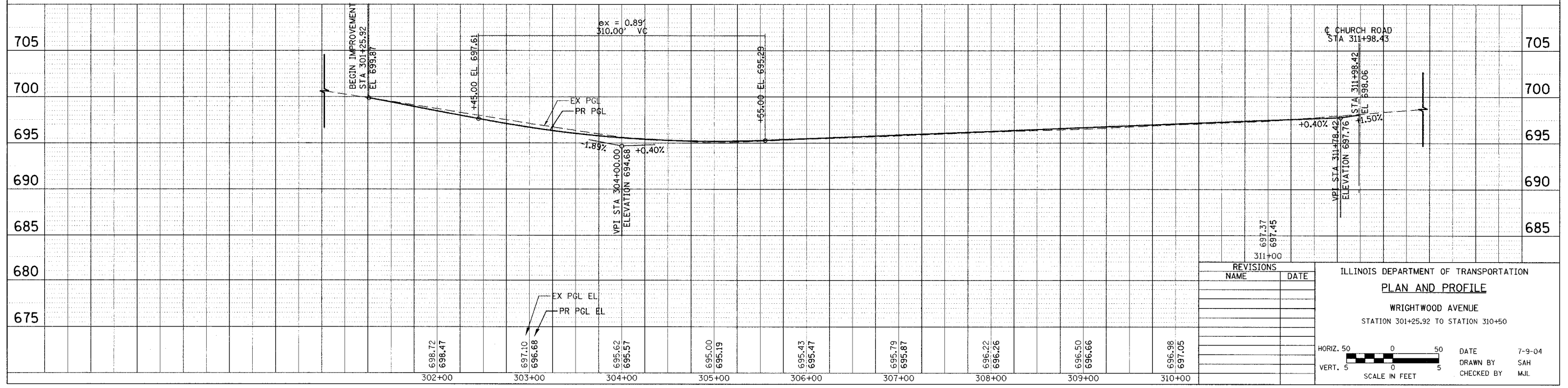
NOTE: DRIVEWAY RADII ARE 15' UNLESS OTHERWISE NOTED.



PROP CURVE WRTGI  
 PI STA = 308+28.71  
 $\Delta = 8^\circ 59' 13''$  (RT)  
 $D = 13^\circ 58' 28''$   
 $R = 410.00'$   
 $T = 32.22'$   
 $L = 64.31'$   
 $E = 1.26'$   
 $\theta = N/C$   
 $TR = N/A$   
 $SE RUN = N/A$   
 $PC STA = 307+96.49$   
 $PT STA = 308+60.80$

WRIGHTWOOD AVENUE

PROPOSED VIEW



REVISIONS	
NAME	DATE

ILLINOIS DEPARTMENT OF TRANSPORTATION  
 PLAN AND PROFILE  
 WRIGHTWOOD AVENUE  
 STATION 301+25.92 TO STATION 310+50

HORIZ. 50  
 VERT. 5  
 SCALE IN FEET

DATE 7-9-04  
 DRAWN BY SAH  
 CHECKED BY MJL

DATE: \_\_\_\_\_ BY: \_\_\_\_\_  
 PROJECT NO.: \_\_\_\_\_  
 PLAN NO.: \_\_\_\_\_  
 CHECKED BY: \_\_\_\_\_  
 DATE: \_\_\_\_\_

DATE: \_\_\_\_\_ BY: \_\_\_\_\_  
 PROJECT NO.: \_\_\_\_\_  
 PROFILE NO.: \_\_\_\_\_  
 CHECKED BY: \_\_\_\_\_  
 DATE: \_\_\_\_\_

