

F.A.U. RTE.	SECTION	COUNTY	TOTAL SHEETS	SHEET NO.
02-00048-00-BR	COOK	27	8	
STA.	TO STA.			
FED. ROAD DIST. NO.	ILLINOIS FED. AID PROJECT			
CONTRACT NO. 83779				

- LEGEND**
- △ CONTROL POINT
 - PR STORM SEWER
 - EX BRUSH LINE
 - ⊗ TREE OR BUSH REMOVAL
 - EX WETLANDS
 - PR GATE VALVE AND BOX

SIDEWALK CLOSED
R11-1101
24" X 18"
DETAIL 'A'
SIDEWALK CLOSURE SIGNING
SEE HIGHWAY STANDARD 701801

- 1 REMOVE SIGN PAN ASSY T A
SIGN PANEL TYPE 1 (R7-1)
TELESCOPING STEEL SIGN SUPPORT
- 2 REMOVE SIGN PAN ASSY T A
SIGN PANEL TYPE 1 (R7-1)
TELESCOPING STEEL SIGN SUPPORT

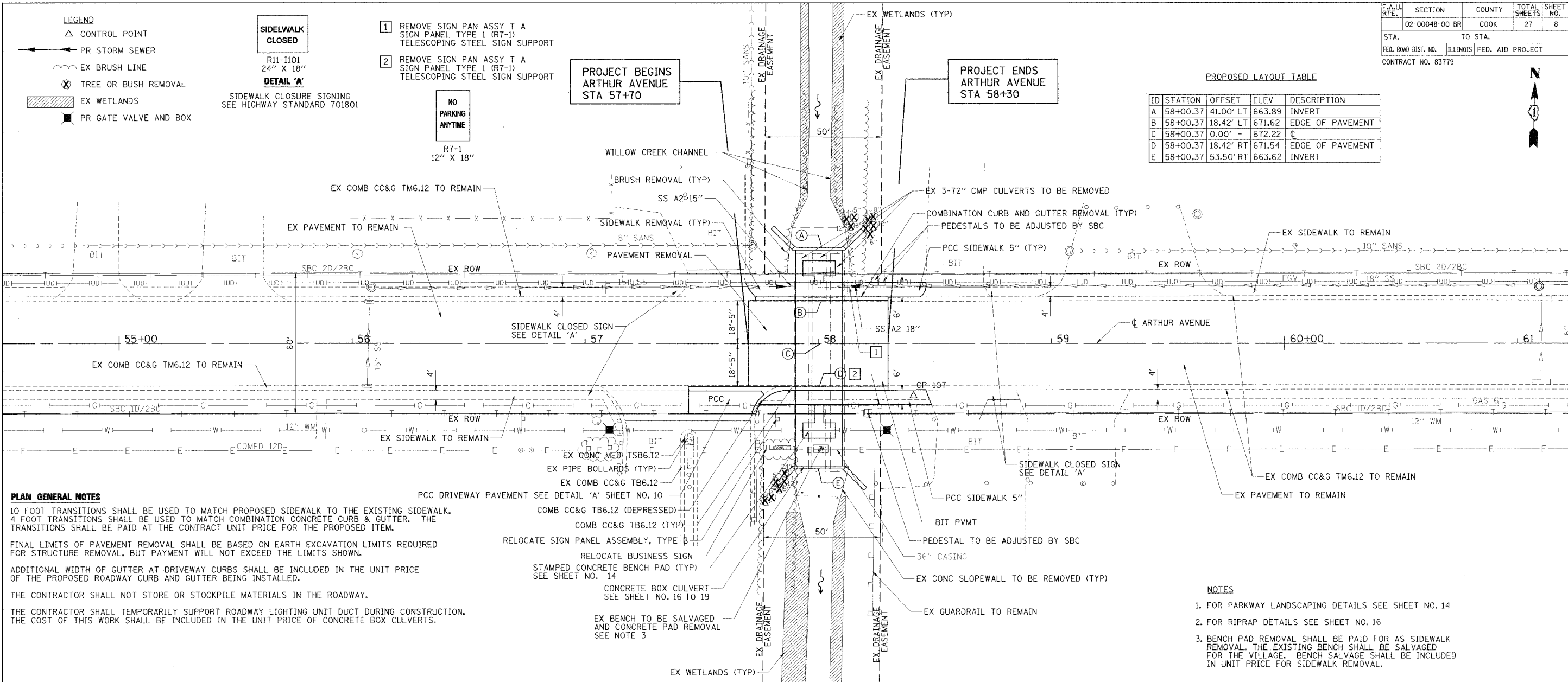
NO PARKING ANYTIME
R7-1
12" X 18"

PROJECT BEGINS
ARTHUR AVENUE
STA 57+70

PROJECT ENDS
ARTHUR AVENUE
STA 58+30

PROPOSED LAYOUT TABLE

ID	STATION	OFFSET	ELEV	DESCRIPTION
A	58+00.37	41.00' LT	663.89	INVERT
B	58+00.37	18.42' LT	671.62	EDGE OF PAVEMENT
C	58+00.37	0.00' -	672.22	CL
D	58+00.37	18.42' RT	671.54	EDGE OF PAVEMENT
E	58+00.37	53.50' RT	663.62	INVERT



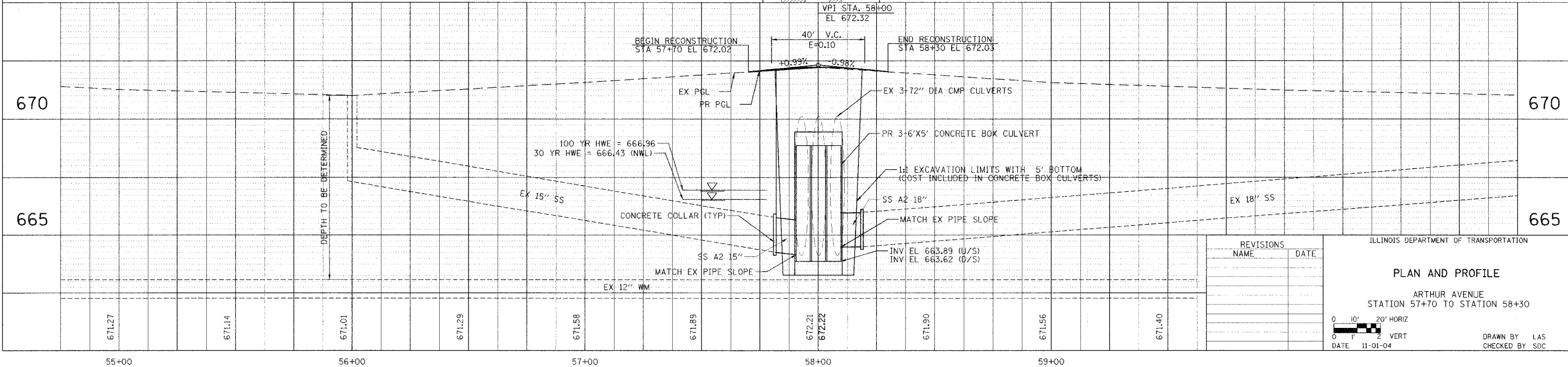
PLAN GENERAL NOTES

- 10 FOOT TRANSITIONS SHALL BE USED TO MATCH PROPOSED SIDEWALK TO THE EXISTING SIDEWALK.
- 4 FOOT TRANSITIONS SHALL BE USED TO MATCH COMBINATION CONCRETE CURB & GUTTER. THE TRANSITIONS SHALL BE PAID AT THE CONTRACT UNIT PRICE FOR THE PROPOSED ITEM.
- FINAL LIMITS OF PAVEMENT REMOVAL SHALL BE BASED ON EARTH EXCAVATION LIMITS REQUIRED FOR STRUCTURE REMOVAL, BUT PAYMENT WILL NOT EXCEED THE LIMITS SHOWN.
- ADDITIONAL WIDTH OF GUTTER AT DRIVEWAY CURBS SHALL BE INCLUDED IN THE UNIT PRICE OF THE PROPOSED ROADWAY CURB AND GUTTER BEING INSTALLED.
- THE CONTRACTOR SHALL NOT STORE OR STOCKPILE MATERIALS IN THE ROADWAY.
- THE CONTRACTOR SHALL TEMPORARILY SUPPORT ROADWAY LIGHTING UNIT DUCT DURING CONSTRUCTION. THE COST OF THIS WORK SHALL BE INCLUDED IN THE UNIT PRICE OF CONCRETE BOX CULVERTS.

- PCC DRIVEWAY PAVEMENT SEE DETAIL 'A' SHEET NO. 10
- COMB CC&G TB6.12 (DEPRESSED)
- COMB CC&G TB6.12 (TYP)
- RELOCATE SIGN PANEL ASSEMBLY, TYPE B
- RELOCATE BUSINESS SIGN
- STAMPED CONCRETE BENCH PAD (TYP) SEE SHEET NO. 14
- CONCRETE BOX CULVERT SEE SHEET NO. 16 TO 19
- EX BENCH TO BE SALVAGED AND CONCRETE PAD REMOVAL SEE NOTE 3

NOTES

1. FOR PARKWAY LANDSCAPING DETAILS SEE SHEET NO. 14
2. FOR RIPRAP DETAILS SEE SHEET NO. 16
3. BENCH PAD REMOVAL SHALL BE PAID FOR AS SIDEWALK REMOVAL. THE EXISTING BENCH SHALL BE SALVAGED FOR THE VILLAGE. BENCH SALVAGE SHALL BE INCLUDED IN UNIT PRICE FOR SIDEWALK REMOVAL.

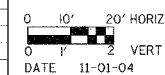


REVISIONS	
NAME	DATE

ILLINOIS DEPARTMENT OF TRANSPORTATION

PLAN AND PROFILE

ARTHUR AVENUE
STATION 57+70 TO STATION 58+30



DRAWN BY LAS
CHECKED BY SDC

11/02/2004 10:09 PM
p:\CH02\023\Road\p\arthur.sht

V:\WORK\023\ROAD\023\ARTHUR.SHT 11/02/2004 10:10 PM