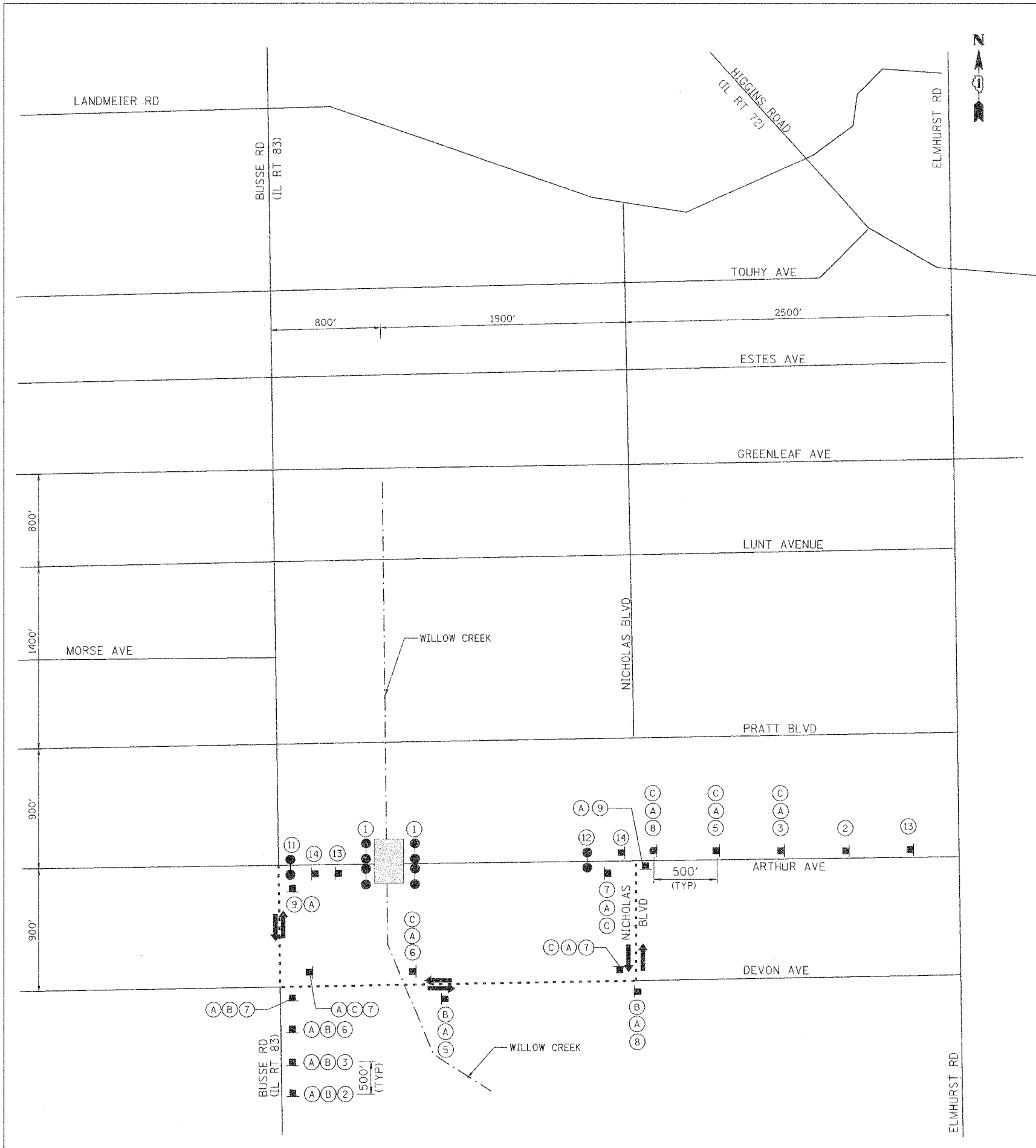


F.A.I.D. RTE.	SECTION	COUNTY	TOTAL SHEETS	SHEET NO.
02-00048-00-BR	COOK	27	11	
STA.	TO STA.			
FED. ROAD DIST. NO.	ILLINOIS	FED. AID PROJECT		
CONTRACT NO. 83779				

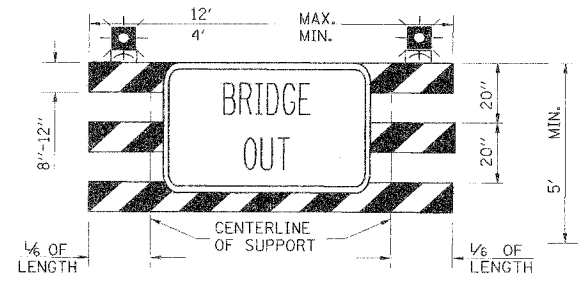


LEGEND

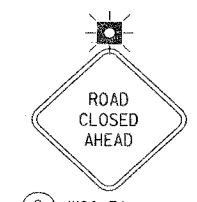
- TYPE III BARRICADE
- SIGN ON PORTABLE OR PERMANENT SUPPORT
- SIGN DESCRIPTION NUMBER
- TWO-WAY TRAFFIC FLOW
- FLASHING LIGHT
- DETOUR ROUTE
- WORK AREA

NOTES

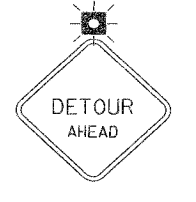
1. ALL DETOUR SIGNING SHALL MEET THE REQUIREMENTS OF ARTICLE 1084.04 OF THE STANDARD SPECIFICATIONS.
2. ALL SIGNS SHALL BE BLACK ON WHITE ON REFLECTIVE SHEETING UNLESS OTHERWISE SPECIFIED.
3. DETOUR ROUTE SIGNING SHALL BE INCLUDED IN TRAFFIC CONTROL AND PROTECTION (DETOUR).
4. A BARRIER MEDIAN ALONG IL 83 (BUSSE ROAD) AT ARTHUR AVENUE PREVENTS VEHICLES FROM THE NORTH AND WEST APPROACHES TO ENTER EASTBOUND ARTHUR AVENUE.



1 BRIDGE OUT TYPE III BARRICADE WITH STANDARD FLASHING LIGHTS (2 EACH) (DOT HWY STD 702001) W/ R11-2 (48" x 30")



2 W20-3A 48" X 48" BLACK ON ORANGE



3 W20-2 48" X 48" VAR. X 6" BLACK ON ORANGE



4 M4-9 30" X 24" BLACK ON ORANGE



5 M4-9(BL) 30" X 24" BLACK ON ORANGE



6 M4-9(BR) 30" X 24" BLACK ON ORANGE



7 M4-9R 30" X 24" BLACK ON ORANGE



8 M4-9L 30" X 24" BLACK ON ORANGE



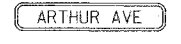
9 M4-8A 24" X 18" BLACK ON ORANGE



11 R9-3a 60" X 30" ON TYPE III BARRICADE WITH STANDARD FLASHING LIGHT



12 R9-3a 60" X 30" ON TYPE III BARRICADE WITH STANDARD FLASHING LIGHT



A W17-1100 24" X 12" BLACK ON ORANGE



B W17-1100 24" X 12" BLACK ON ORANGE



C W17-1100 24" X 12" BLACK ON ORANGE



13 R11-3a 60" X 36" BLACK ON ORANGE



ICRC PROJECT INFORMATION SIGN 60" X 48" ALUMINUM SIGN ON STEEL SUPPORTS (SIGN FURNISHED BY VILLAGE)

REVISIONS	
NAME	DATE

ILLINOIS DEPARTMENT OF TRANSPORTATION

DETOUR SIGNING PLAN
WILLOW CREEK CULVERTS
ARTHUR AVENUE

DATE 11-01-04

DRAWN BY LAS
CHECKED BY SDC