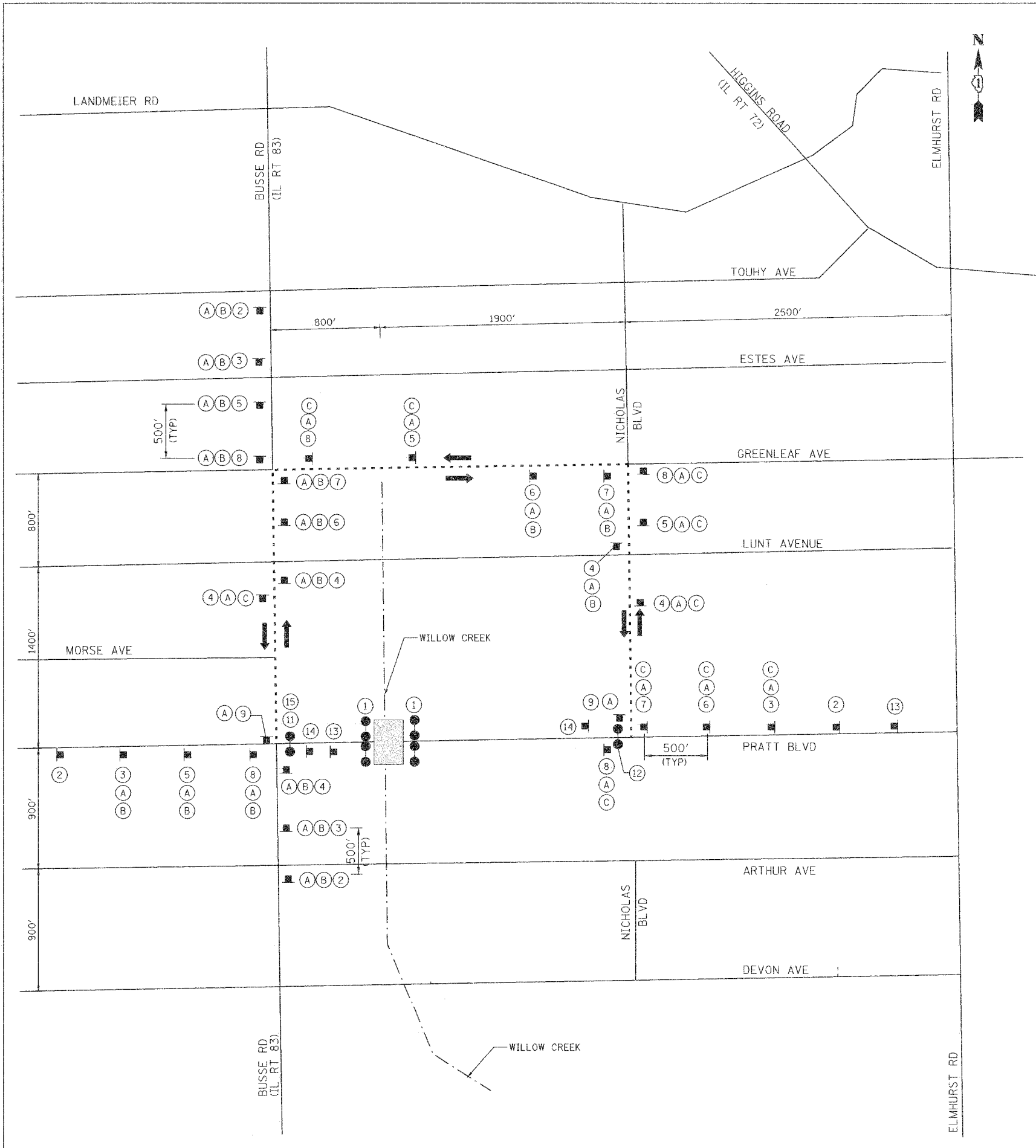


F.A.U. RTE.	SECTION	COUNTY	TOTAL SHEETS	SHEET NO.
02-00048-00-BR	COOK	27	12	
STA.	TO STA.			
FED. ROAD DIST. NO.	ILLINOIS	FED. AID PROJECT		
CONTRACT NO. 83779				

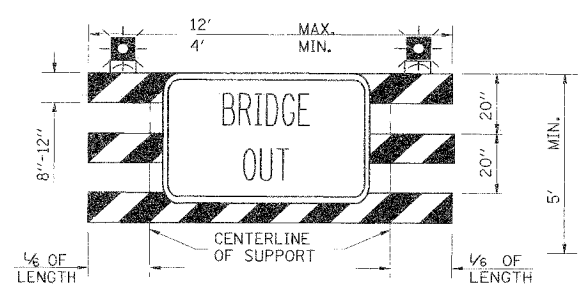


LEGEND

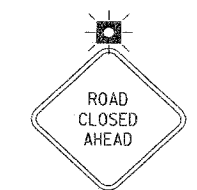
- TYPE III BARRICADE
- SIGN ON PORTABLE OR PERMANENT SUPPORT
- SIGN DESCRIPTION NUMBER
- TWO-WAY TRAFFIC FLOW
- FLASHING LIGHT
- DETOUR ROUTE
- WORK AREA

NOTES

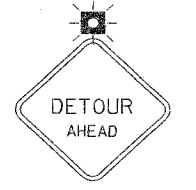
1. ALL DETOUR SIGNING SHALL MEET THE REQUIREMENTS OF ARTICLE 1084.04 OF THE STANDARD SPECIFICATIONS.
2. ALL SIGNS SHALL BE BLACK ON WHITE ON REFLECTIVE SHEETING UNLESS OTHERWISE SPECIFIED.
3. DETOUR ROUTE SIGNING SHALL BE INCLUDED IN TRAFFIC CONTROL AND PROTECTION (DETOUR).



- 1 BRIDGE OUT TYPE III BARRICADE WITH STANDARD FLASHING LIGHTS (2 EACH) (DOT HWY STD 702001) W/ R11-2 (48" x 30")



- 2 W20-3A 48" X 48" BLACK ON ORANGE



- 3 W20-2 48" X 48" VAR. X 6" BLACK ON ORANGE



- 4 M4-9 30" X 24" BLACK ON ORANGE



- 5 M4-9(BL) 30" X 24" BLACK ON ORANGE



- 6 M4-9(BR) 30" X 24" BLACK ON ORANGE



- 7 M4-9R 30" X 24" BLACK ON ORANGE



- 8 M4-9L 30" X 24" BLACK ON ORANGE

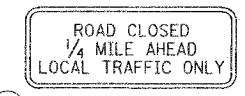


- 9 M4-8A 24" X 18" BLACK ON ORANGE



- 11 R9-3a 60" X 30" ON TYPE III BARRICADE WITH STANDARD FLASHING LIGHT

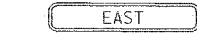
- 10 NOT USED



- 12 R9-3a 60" X 30" ON TYPE III BARRICADE WITH STANDARD FLASHING LIGHT



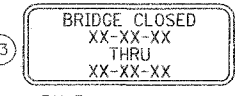
- A W17-1100 24" X 12" BLACK ON ORANGE



- B W17-1100 24" X 12" BLACK ON ORANGE



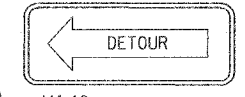
- C W17-1100 24" X 12" BLACK ON ORANGE



- 13 R11-3a 60" X 36" BLACK ON ORANGE

- 14

ICRC PROJECT INFORMATION SIGN 60" X 48" ALUMINUM SIGN ON STEEL SUPPORTS (SIGN FURNISHED BY VILLAGE)



- 15 M4-10 48" X 18" BLACK ON ORANGE

REVISIONS	
NAME	DATE

ILLINOIS DEPARTMENT OF TRANSPORTATION

DETOUR SIGNING PLAN
WILLOW CREEK CULVERTS
PRATT BOULEVARD

DATE 11-01-04

DRAWN BY LAS
CHECKED BY SDC