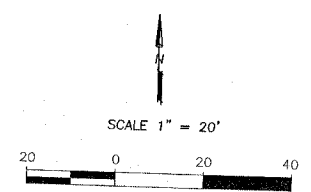
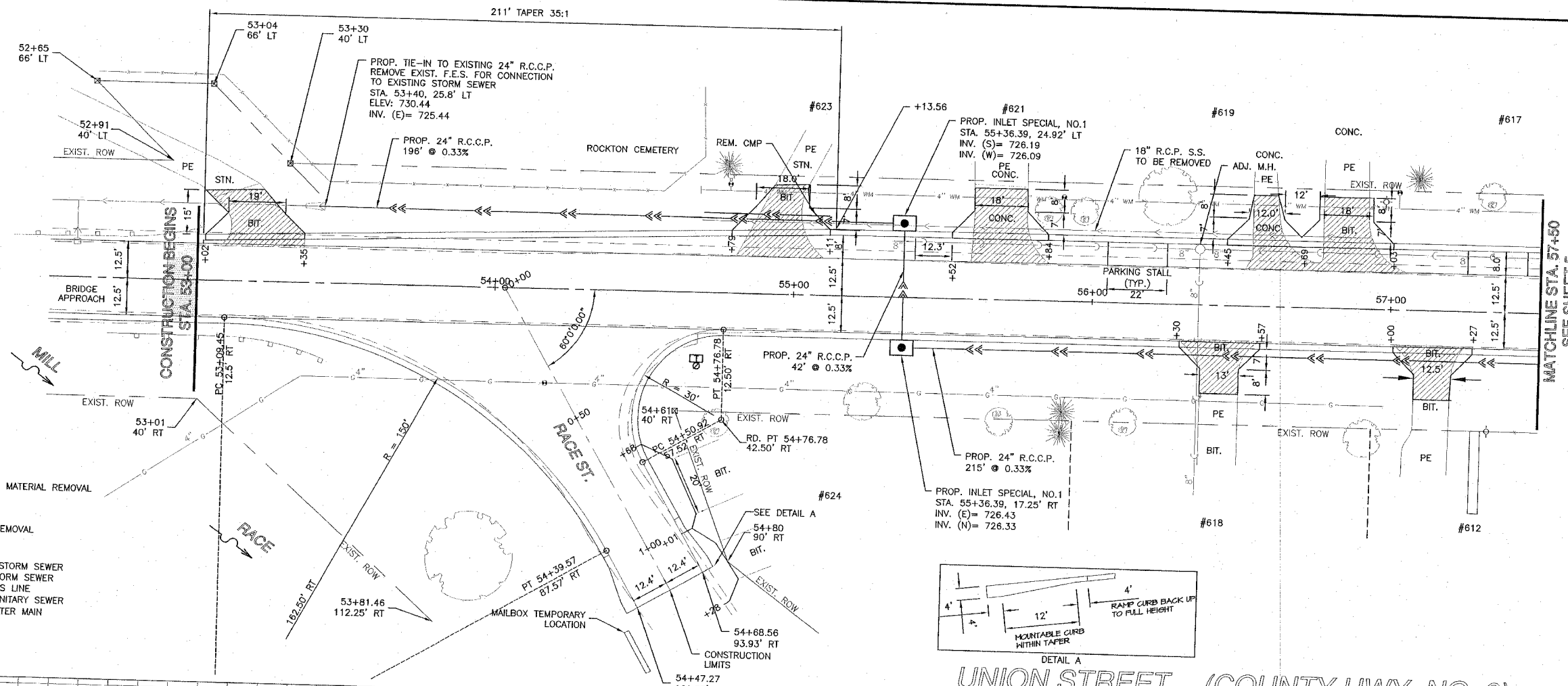


RTE.	SECTION	COUNTY	TOTAL SHEETS	SHEET NO.
FAU 9878	93-00027-00-FP	WINNEBAGO	22	4
F.H.W.A. REG	ILLINOIS	PROJECT:	M-5291 (B)	



**BENCH MARKS:**

BM #81--BRASS MONUMENT  
LOCATED ON BRIDGE PARAPET WALL  
STA. 50+00, 16' RT  
ELEV.: 734.31

TBM#1 FIRE HYDRANT--  
LETTER "A" IN ALBERT  
STA 54+77, 34' LT  
ELEV.: 729.59

**NOTE:**  
ALL PROPOSED RADII ARE 30'  
FLAG OF CURB.

ALL COM. CURB & GUTTER  
WILL BE TYPE B6.18.

**NOTE:**  
PRIOR TO CONSTRUCTION  
MAILBOXES BETWEEN RACE STREET AND  
WEST STREET TO BE MOVED TO CENTRAL  
LOCATION--SOUTH OF UNION STREET  
BETWEEN MILL RACE AND RACE STREET.

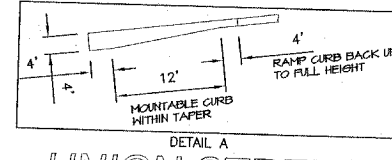
WHEN CONSTRUCTION IS COMPLETED  
MAILBOXES TO BE REPLACE AT  
ORIGINAL STATIONS.

(MAIL ROUTE IS A WALKING ROUTE)

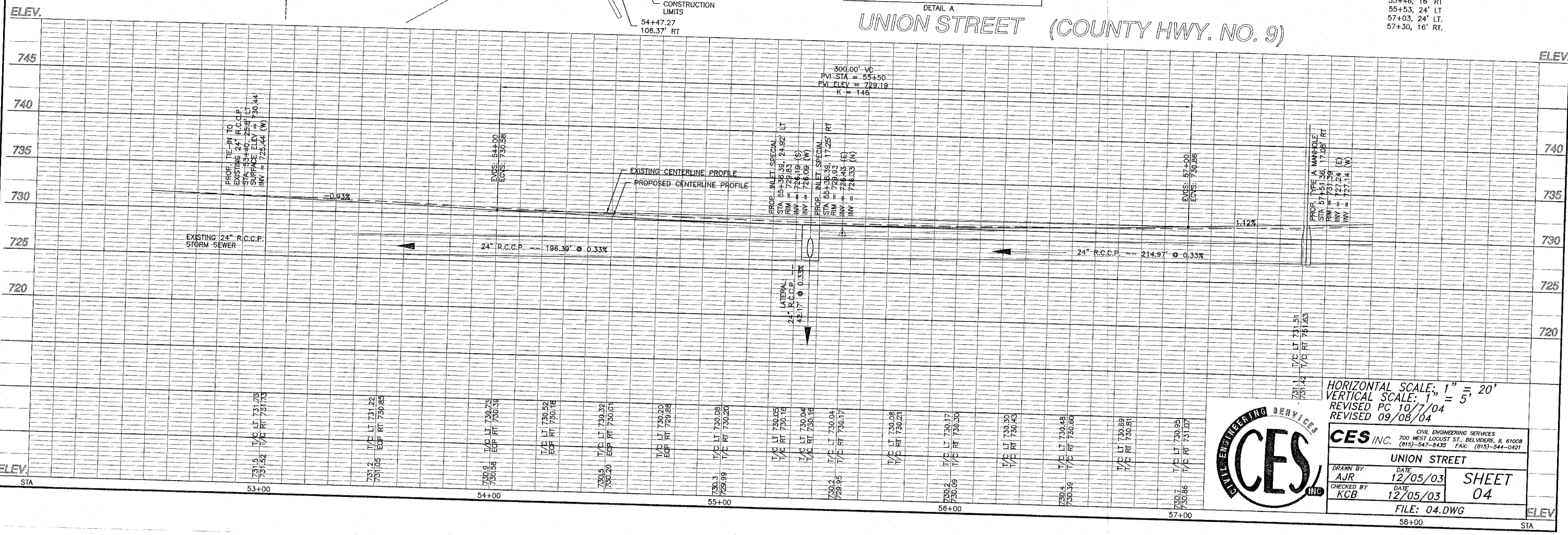
**MAILBOX ORIGINAL LOCATIONS**

55+42, 24' LT  
55+46, 16' RT  
55+53, 24' LT  
57+03, 24' LT  
57+30, 16' RT.

- LEGEND:**
- BITUMINOUS MATERIAL REMOVAL
  - DRIVEWAY REMOVAL
  - PROPOSED STORM SEWER
  - EXISTING STORM SEWER
  - EXISTING GAS LINE
  - EXISTING SANITARY SEWER
  - EXISTING WATER MAIN



**UNION STREET (COUNTY HWY. NO. 9)**



HORIZONTAL SCALE: 1" = 20'  
VERTICAL SCALE: 1" = 5'  
REVISED PC 10/7/04  
REVISED 09/08/04



<b>CES INC.</b>		CIVIL ENGINEERING SERVICES	
700 WEST LOCUST ST., BELLEVILLE, IL 61808		(618)-547-8435 FAX: (618)-544-0421	
<b>UNION STREET</b>			
DRAWN BY	DATE	<b>SHEET</b>	<b>04</b>
AJR	12/05/03		
CHECKED BY	DATE		
KCB	12/05/03		
FILE: 04.DWG			
58+00		STA	