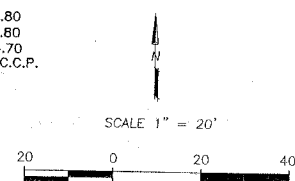
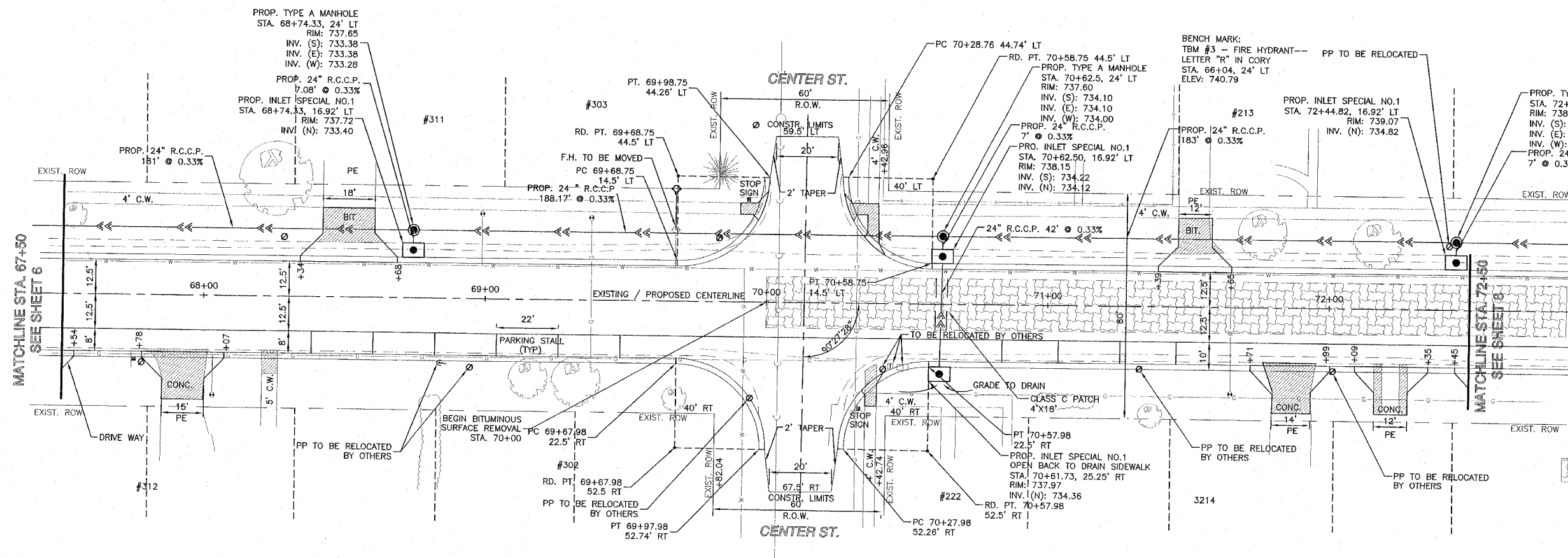
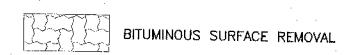


RTE.	SECTION	COUNTY	TOTAL SHEETS	SHEET NO.
FAU 9878	93-00027-00-FP	WINNEBAGO	22	7
F.H.W.A. REG	ILLINOIS	PROJECT:	M-5291 (8)	

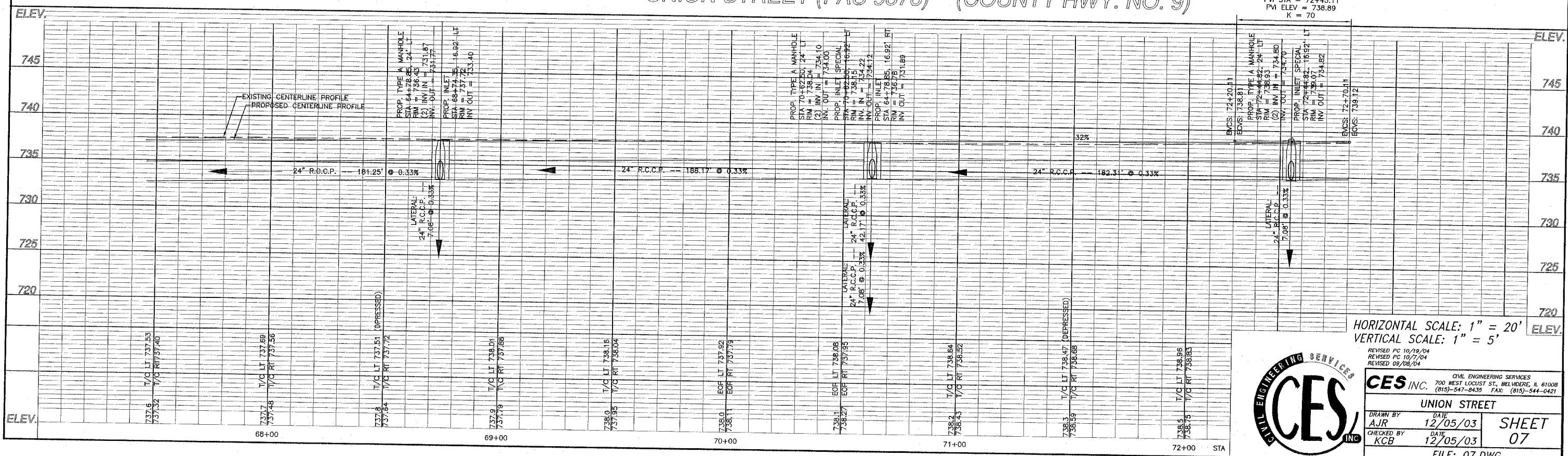


NOTE:  
ALL PROPOSED RADII ARE 30' FLAG OF CURB.  
ALL COMB. CURB & GUTTER WILL BE TYPE B6.18.



UNION STREET (FAU 9878) (COUNTY HWY. NO. 9)

50.00' VC  
PVI STA = 72+45.11  
PVI ELEV = 738.89  
K = 70



HORIZONTAL SCALE: 1" = 20'  
VERTICAL SCALE: 1" = 5'



CES INC. CIVIL ENGINEERING SERVICES 700 WEST LOCUST ST., BELLEVILLE, IL 61008 (618)-547-8435 FAX: (618)-544-0421	
UNION STREET	
DRAWN BY AJR	DATE 12/05/03
CHECKED BY KCB	DATE 12/05/03
SHEET 07	
FILE: 07.DWG	