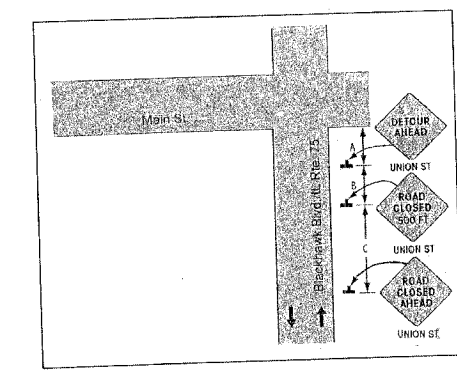
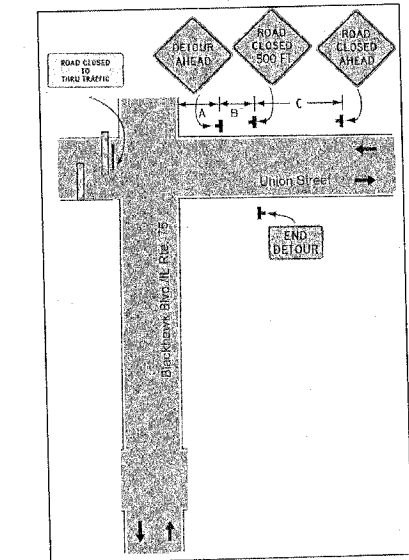
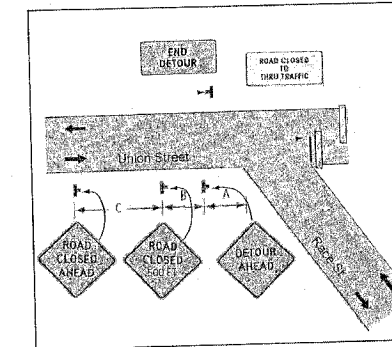
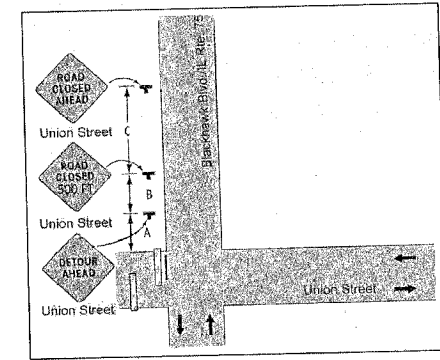
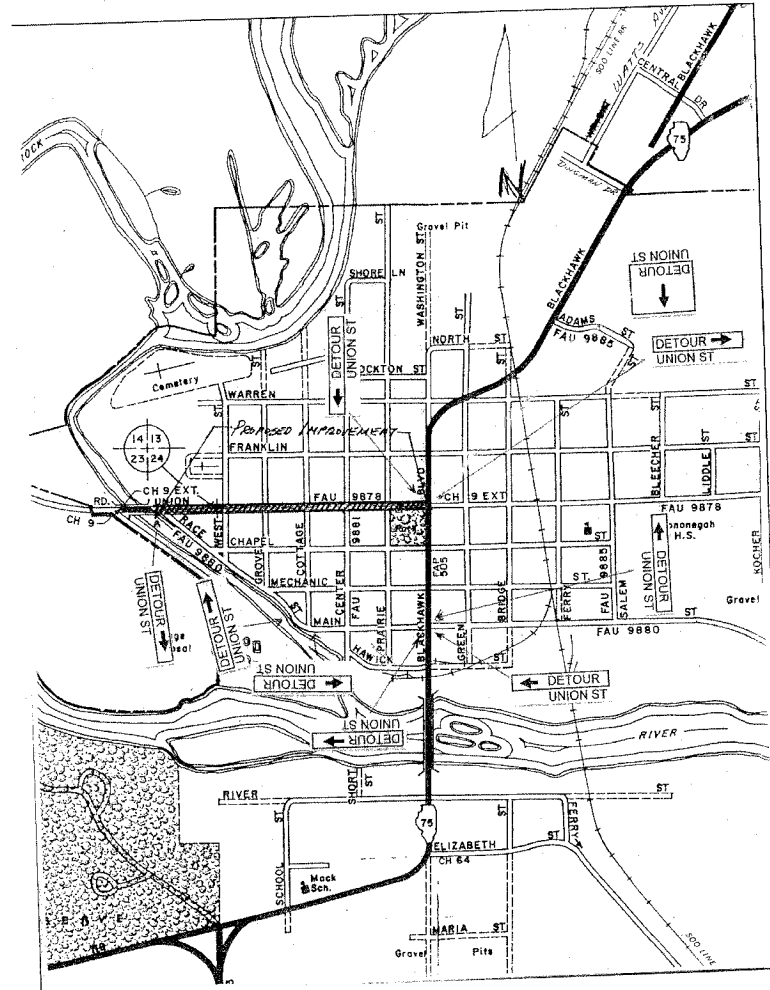


# TRAFFIC CONTROL PLAN

## GENERAL NOTES

- Right arrow detour signs shall be M4-9 (R) 30"Wx24"D
- Left arrow detour signs shall be M4-9 (L) 30"Wx24"D
- Straight ahead detour signs shall consist of two signs:  
M4-8 24"Wx12"D and M6-3 21"Wx15"D
- Street name signs shall be a minimum 5" high x 2.5" wide letters mounted on an 8"D water proof material with orange. Signs must be approved by the Engineer prior to installation.
- Road Closed ahead - 1500 FT signs shall be W20-3
- Detour Ahead 500 FT signs shall be W20-2
- A distance = 250 feet
- B distance = 250 feet
- C distance = 1000 feet
- Road Closed To Through Traffic signs shall be R11-14 accompanied by a Detour (R) or (L) sign shall be M4-10
- End Detour signs shall be M4-8a



<b>CES INC.</b>		CIVIL ENGINEERING SERVICES 700 WEST LOCUST ST., BELVIDERE, IL 61008 (815)-547-8435 FAX: (815)-544-0421	
<b>UNION STREET</b>			
DRAWN BY	DATE	<b>SHEET</b>	<b>10</b>
PC	11/22/04		
CHECKED BY	DATE		
KCB	11/22/04		
FILE: 10.DWG			