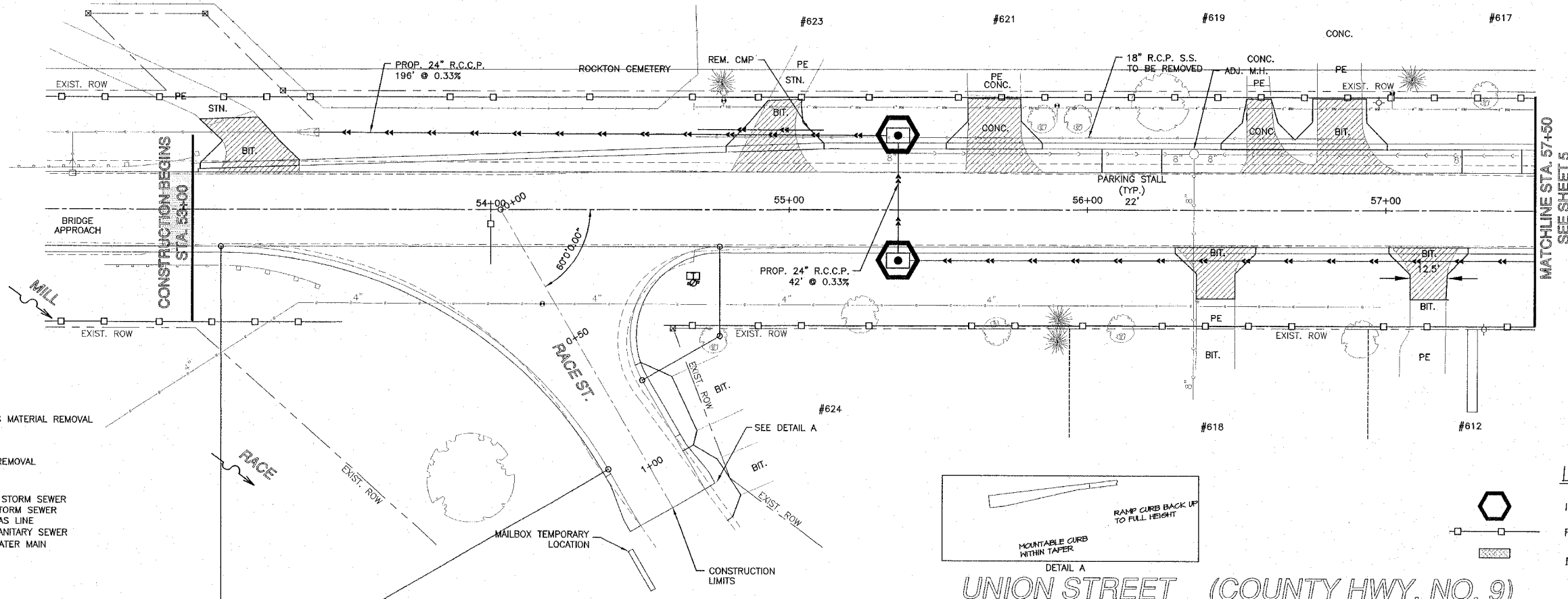
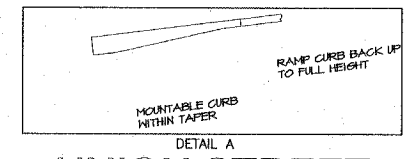


RTE.	SECTION	COUNTY	TOTAL SHEETS	SHEET NO.
FAU 9878	93-00027-00-FP	WINNEBAGO	22	20
F.H.W.A. REG	ILLINOIS	PROJECT:	M-5291 (8)	

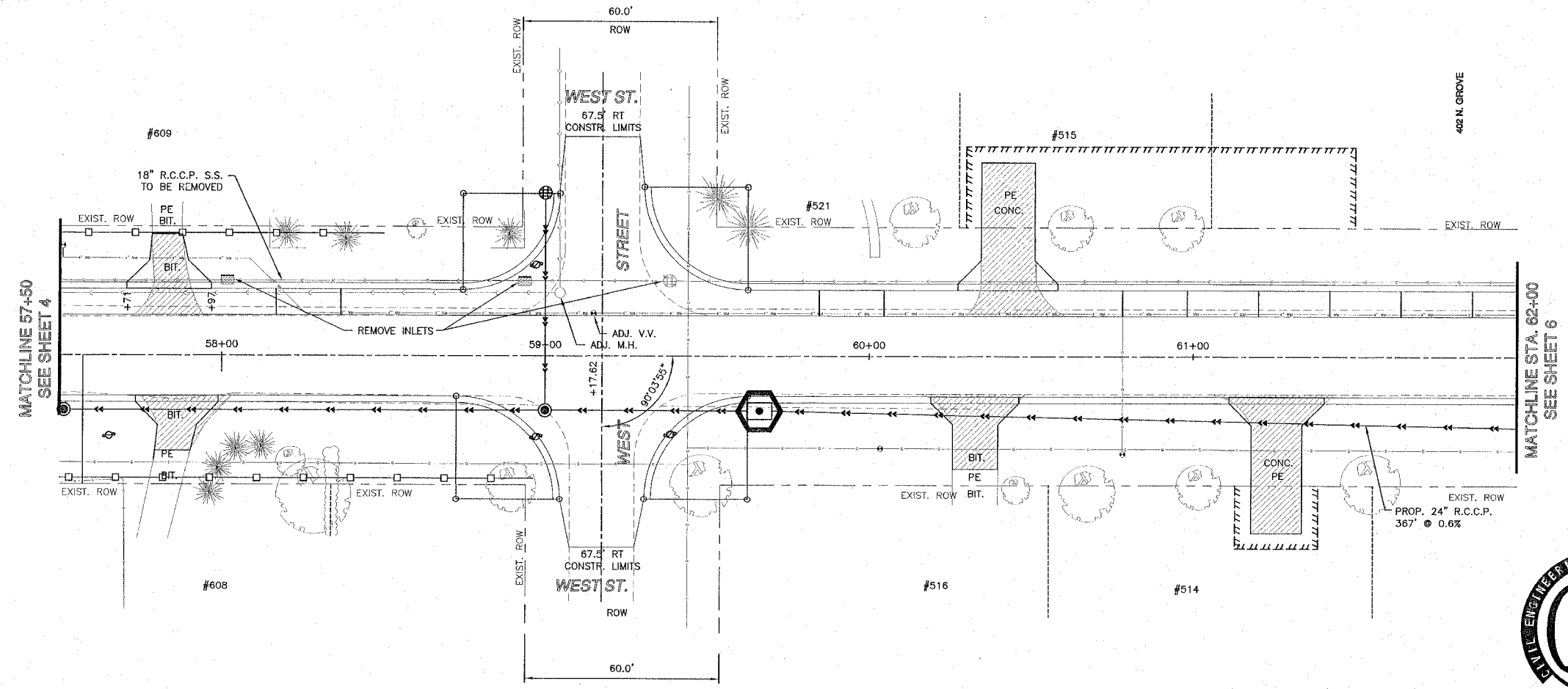


- LEGEND:**
- BITUMINOUS MATERIAL REMOVAL
 - DRIVEWAY REMOVAL
 - PROPOSED STORM SEWER
 - EXISTING STORM SEWER
 - EXISTING GAS LINE
 - EXISTING SANITARY SEWER
 - EXISTING WATER MAIN

- LEGEND**
- INLET / PIPE PROTECTION
 - PERIMETER EROSION BARRIER - SILT FILTER FENCE
 - EXCELSIOR LOG DITCH CHECK



UNION STREET (COUNTY HWY. NO. 9)



CES INC. CIVIL ENGINEERING SERVICES 700 WEST LOCUST ST., BELVIDERE, IL 61009 (815)-547-8435 FAX: (815)-544-0421			
UNION STREET			
DRAWN BY PC	DATE 10/26/04	SHEET 20	
CHECKED BY KCB	DATE 10/26/04		
FILE: SHEET20.DWG			