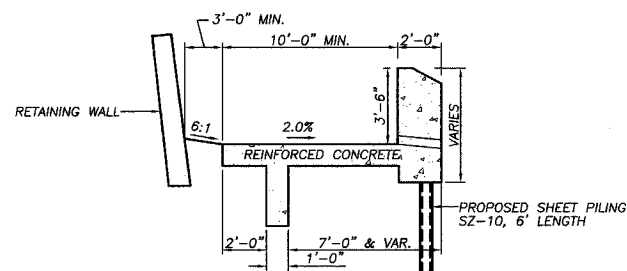


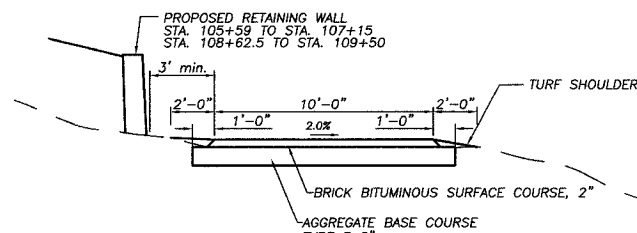
FAS ROUTE NO.	SEC	COUNTY	TOTAL SHEETS	SHEET NO.
-	*	LEE	23	3

ILLINOIS PROJECT TE-D2(115)

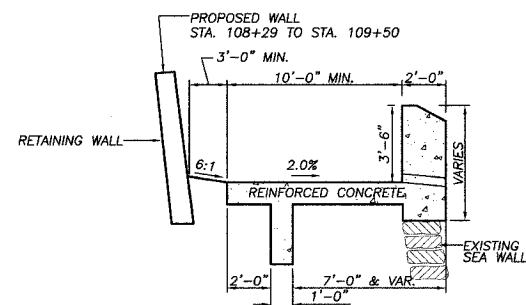
* 01-P4000-00-BT



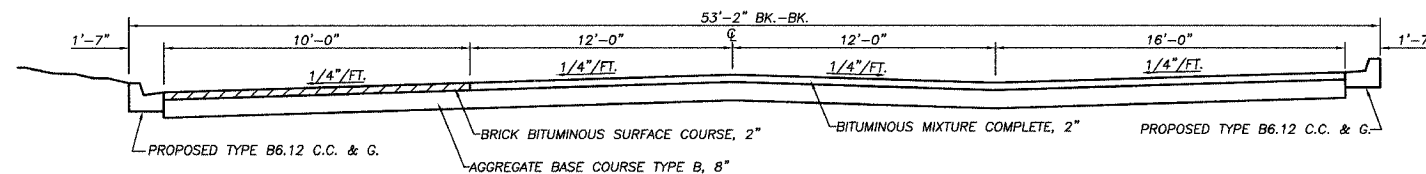
TYPICAL BIKE PATH SECTION
 STA. 106+88.8 TO STA. 107+15.1
 OMISSION STA. 107+15.1 TO STA. 108+62.5 (BY OTHERS)



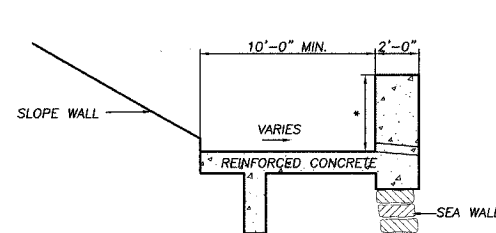
TYPICAL BIKE PATH SECTION
 STA. 108+00 TO STA. 108+88.8
 STA. 109+16.5 TO STA. 111+61



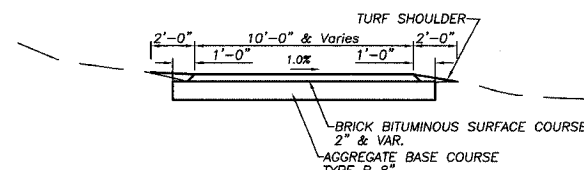
TYPICAL BIKE PATH SECTION
 STA. 108+62.5 TO STA. 109+16.5



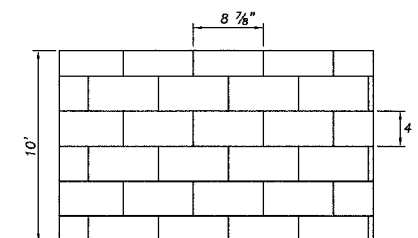
TYPICAL BIKE PATH SECTION
 STA. 119+64 TO STA. 121+05



TYPICAL BIKE PATH SECTION
 EXISTING UNDER GALENA AVE.
 AND FUTURE UNDER PEORIA AVE. (STA. 107+31.5 TO STA. 108+27.5)
 * 3'-6" UNDER PEORIA AVE. BRIDGE
 * 4'-6" UNDER GALENA AVE. BRIDGE



EXISTING BIKE PATH SECTION
 STA. 111+61 TO STA. 114+40



BRICK SURFACE COARSE PRINT DETAIL
 "OFFSET BRICK"

NOTE: PAGE DRIVE TYPICAL SECTIONS CAN BE FOUND ON SHEET 9

© WENDLER ENGINEERING SERVICES, INC. 2004



WENDLER ENGINEERING SERVICES, INC.

Structural & Civil Engineers—Land Surveying—Environmental Services
 Illinois Professional Design Firm No. 184-000848

1968 - 2004
 AFTER
36
 YEARS
 WE'RE STILL
 "Turning Ideas
 ...Into Reality!!!"

698 TIMBER CREEK ROAD - P.O. BOX 486 - DIXON, IL 61021 - 815-288-2261
 28 E. MARION - SUITE 3 - PRINCETON, IL 61356 - 815-879-4731
 1770 WEST STATE ST. - SYCAMORE, IL 60178 - 815-895-5008
 804 FREEPORT RD. - STERLING, IL 61081 - (815) 626-4428
 E-MAIL: info@wendler.nu

SCALE: 1"=NTS

REVISION	DATE	SURVEYED BY	JOB NO.	DRAWN BY	DESIGNED BY
	04/30/04		99022	BEH	
		BOOK NO.	DRAWING NAME	DRAWING DATE	
			TYP. SECT.	2/3/2004	
TITLE					
TYPICAL SECTIONS					
DIXON PARK DISTRICT					