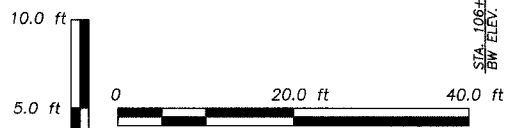
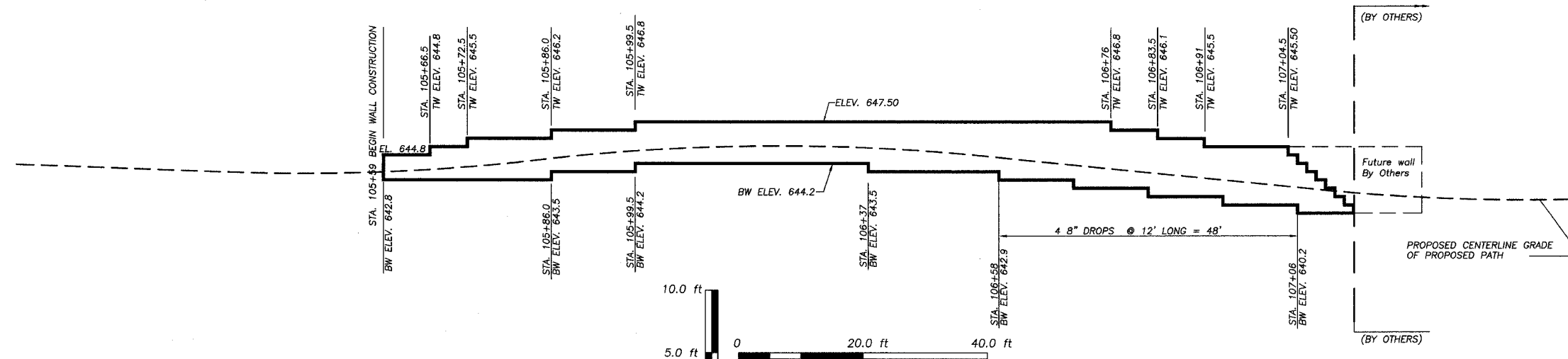
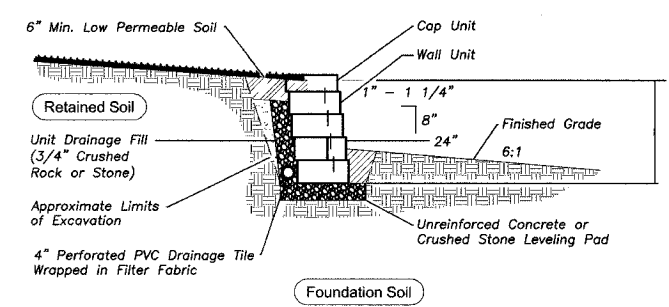


FAS ROUTE NO.	SEC	COUNTY	TOTAL SHEETS	SHEET NO.
-	*	LEE	23	11

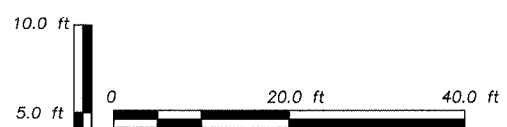
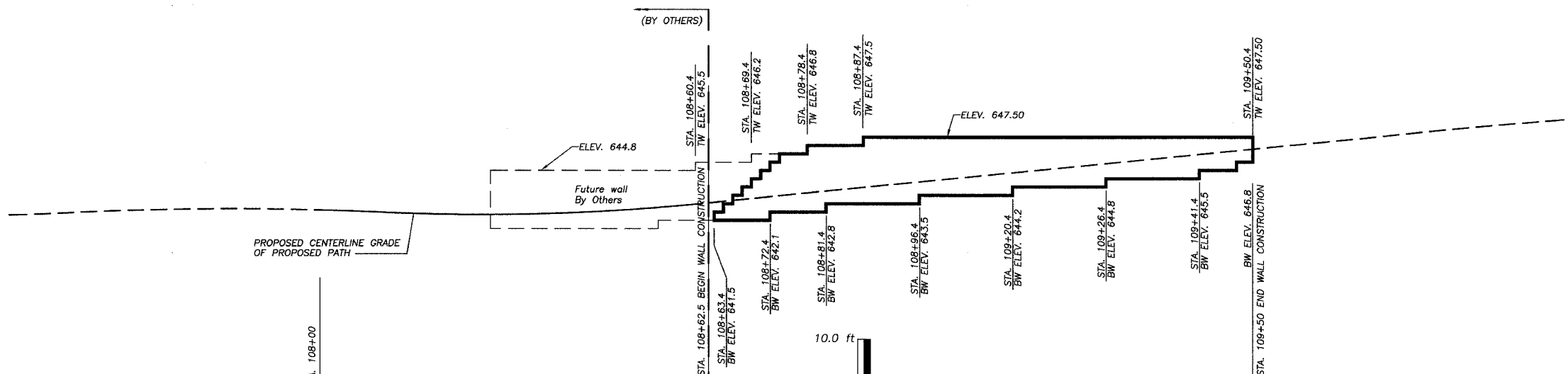
ILLINOIS PROJECT TE-D2(115)
* 01-P4000-00-BT



SEGMENTAL CONCRETE RETAINING WALL DETAIL
STA. 105+59 TO STA. 107+15.1
WALL AREA = 577 SQ. FT.



Typical Segmental Wall Section



SEGMENTAL CONCRETE RETAINING WALL DETAIL
STA. 108+63.4 TO STA. 109+50.4
WALL AREA = 341 SQ. FT.

BILL OF MATERIAL

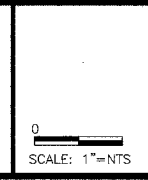
ITEM	UNIT	QUANTITY
Segmental Concrete Block Wall	SQ. FT.	918

© WENDLER ENGINEERING SERVICES, INC. 2004

WENDLER ENGINEERING SERVICES, INC.
Structural & Civil Engineers—Land Surveying—Environmental Services
Illinois Professional Design Firm No. 184-000848

1968 - 2004
ANNIVERSARY
36
YEARS
WE'RE STILL
"Turning Ideas
...Into Reality!"

698 TIMBER CREEK ROAD - P.O. BOX 486 - DIXON, IL 61021 - 815-288-2261
28 E. MARION - SUITE 3 - PRINCETON, IL 61356 - 815-879-4731
1770 WEST STATE ST. - SYCAMORE, IL 60178 - 815-895-5008
804 FREEPORT RD. - STERLING, IL 61081 - (815) 626-4428
E-MAIL: info@wendler.nu



REVISION	DATE	SURVEYED BY	JOB NO.	DRAWN BY	DESIGNED BY
			99022	BEH	
		BOOK NO.	DRAWING NAME	DRAWING DATE	
			WALLELEV	2/3/2004	
TITLE					
RETAINING WALL DETAILS					
CLIENT					
DIXON PARK DISTRICT					