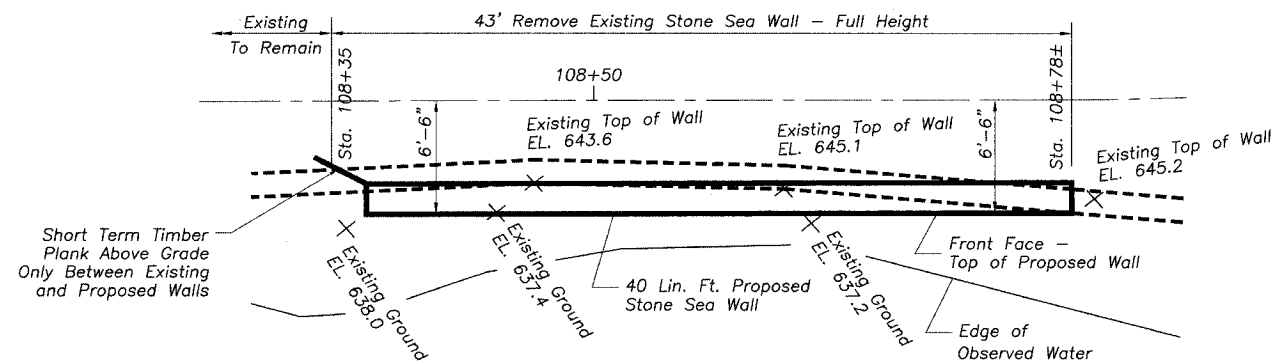


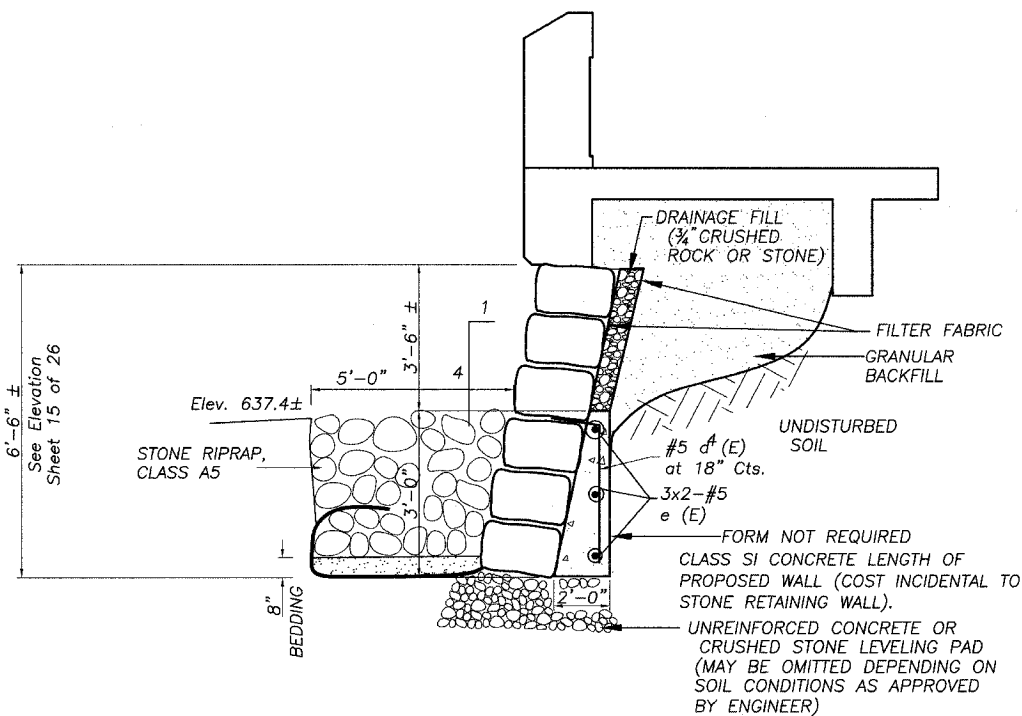
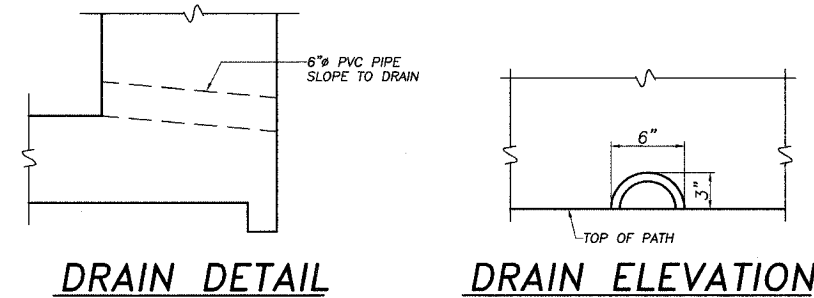
FAS ROUTE NO.	SEC	COUNTY	TOTAL SHEETS	SHEET NO.
-	*	LEE	23	13

ILLINOIS PROJECT TE-D2(115)
* 01-P4000-00-BT



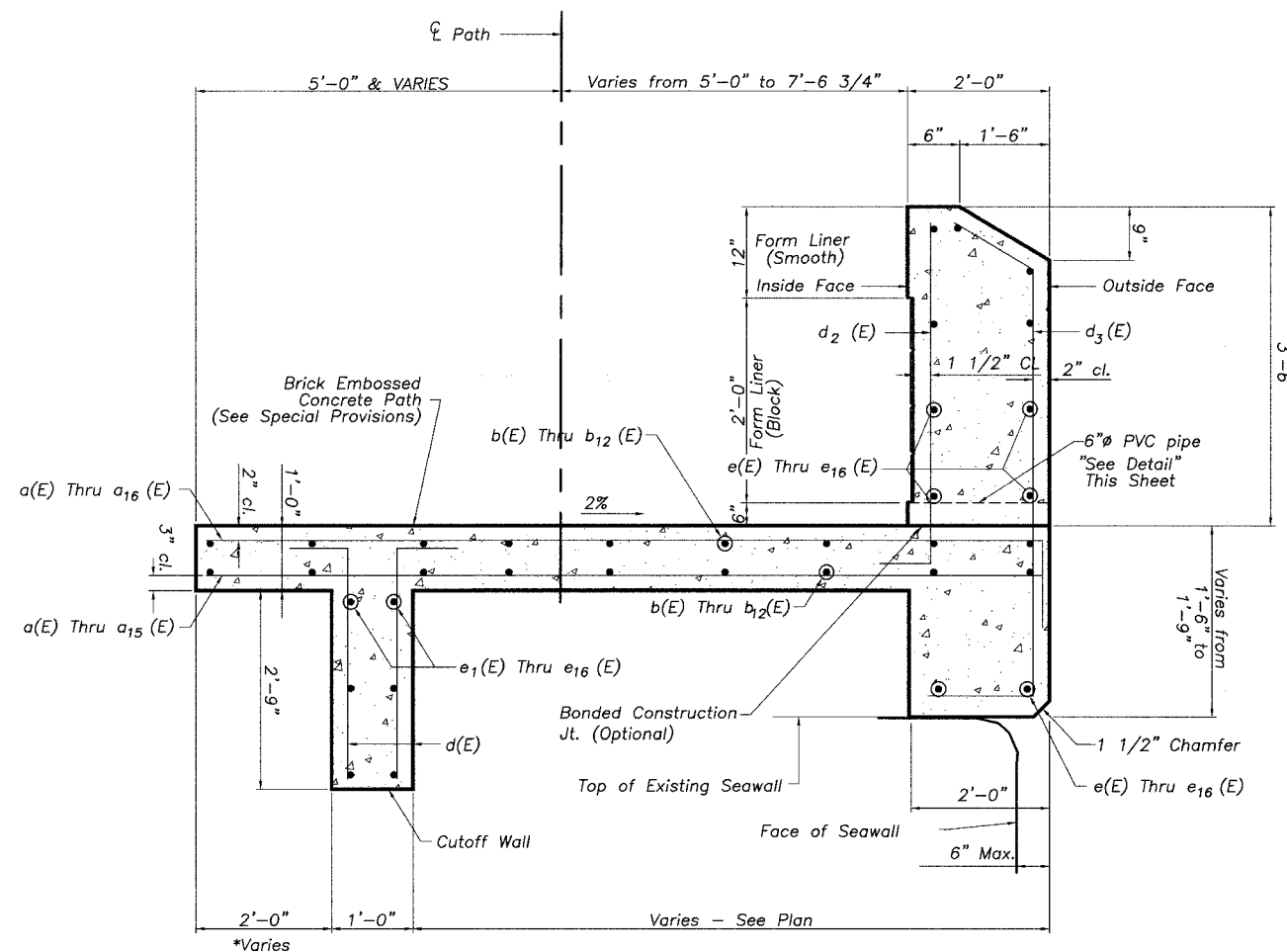
SEA WALL REALIGNMENT PLAN

Rt. Sta. 108+35 to Rt. Sta. 108+78±



TYPICAL SECTION THRU PROPOSED SEA WALL

Rt. Sta. 108+38 to Rt. Sta. 108+78±
Looking West



TYPICAL SECTION THRU WALL

Sta. 106+88.8 to Sta. 107+15.1
Sta. 108+62.5 to Sta. 109+16.2
Looking East

© WENDLER ENGINEERING SERVICES, INC. 2004

WENDLER ENGINEERING SERVICES, INC.
Structural & Civil Engineers—Land Surveying—Environmental Services
Illinois Professional Design Firm No. 184-000848

1968 - 2004
AFTER
36
YEARS
WE'RE STILL
"Turning Ideas...
...Into Reality!"

698 TIMBER CREEK ROAD - P.O. BOX 486 - DIXON, IL 61021 - 815-288-2261
28 E. MARION - SUITE 3 - PRINCETON, IL 61356 - 815-879-4731
1770 WEST STATE ST. - SYCAMORE, IL 60178 - 815-895-5008
804 FREEPORT RD. - STERLING, IL 61081 - (815) 626-4428
E-MAIL: info@wendler.nu

REVISION	DATE	SURVEYED BY	JOB NO.	DRAWN BY	DESIGNED BY
			99022	BEH	
			RET-WALL-DTLS	2/16/2004	
TITLE TYPICAL SECTION THRU WALL					
TITLE RETAINING WALL DETAILS					
CLIENT DIXON PARK DISTRICT					

SCALE: 1"=NTS