

PLANS FOR PROPOSED FEDERAL-AID BRIDGE REPLACEMENT & REHABILITATION PROGRAM

FAS ROUTE 186 (ROCK ISLAND RD.) SECTION 01-00278-00-BR LEE COUNTY ILLINOIS PROJECT BRS-186(105)

JOB NO. C-92-075-04
CONTRACT NO. 85336

SUMMARY OF QUANTITIES

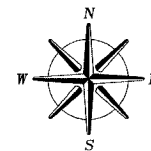
CONSTRUCTION TYPE CODE: X080-2A

CODE NO.	ITEM	UNIT	QUANTITY
20200100	EARTH EXCAVATION	CU YD	340
20700110	POROUS GRANULAR EMBANKMENT	TON	767
*25001000	SEEDING, CLASS 2 (SPECIAL)	ACRE	0.53
35101400	AGGREGATE BASE COURSE, TYPE B	TON	159
40500100	BITUMINOUS MATERIALS (PRIME COAT)	GALLON	140
40500300	BITUMINOUS MIXTURE COMPLETE	TON	134
40600980	BITUMINOUS SURFACE REMOVAL - BUTT JOINT	SQ YD	418
44000100	PAVEMENT REMOVAL	SQ YD	216
48101200	AGGREGATE SHOULDERS, TYPE B	TON	168
50100100	REMOVAL OF EXISTING STRUCTURES	EACH	2
50300225	CONCRETE STRUCTURES	CU YD	28.8
50300300	PROTECTIVE COAT	SQ YD	34
50400505	PRECAST PRESTRESSED CONCRETE DECK BEAMS-27"	SQ FT	2186
50500405	FURNISHING AND ERECTING STRUCTURAL STEEL	POUND	4041
50700305	HARDWARE	POUND	1594
50800205	REINFORCEMENT BARS, EPOXY COATED	POUND	3000
50901005	STEEL BRIDGE RAIL, TYPE SM	FOOT	138
51201100	FURNISHING METAL PILE SHELLS-14"Ø	FOOT	506
51202600	DRIVING AND FILLING SHELLS	FOOT	506
51203200	TEST PILE METAL PILE SHELL	EACH	1
51204900	STEEL SHEET PILING	SQ FT	2408
51500100	NAME PLATES	EACH	1
58100200	WATERPROOFING MEMBRANE SYSTEM	SQ YD	252
58300100	PORTLAND CEMENT MORTAR FAIRING COURSE	FOOT	478
63000000	STEEL PLATE BEAM GUARD RAIL, TYPE A	FOOT	412.5
63100075	TRAFFIC BARRIER TERMINAL, TYPE 5A	EACH	4
*63100167	TRAFFIC BARRIER TERMINAL, TYPE 1 SPECIAL (TANGENT)	EACH	2
*63100169	TRAFFIC BARRIER TERMINAL, TYPE 1 SPECIAL (FLARED)	EACH	2
*63200305	STEEL PLATE BEAM GUARD RAIL REMOVAL	FOOT	447
*70101800	TRAFFIC CONTROL AND PROTECTION (SPECIAL)	L SUM	1
78001110	PAINT PAVEMENT MARKING - LINE 4"	FOOT	657
*78200455	BIDIRECTIONAL GUARD RAIL REFLECTORS	EACH	12
*78201000	TERMINAL MARKERS - DIRECT APPLIED	EACH	4

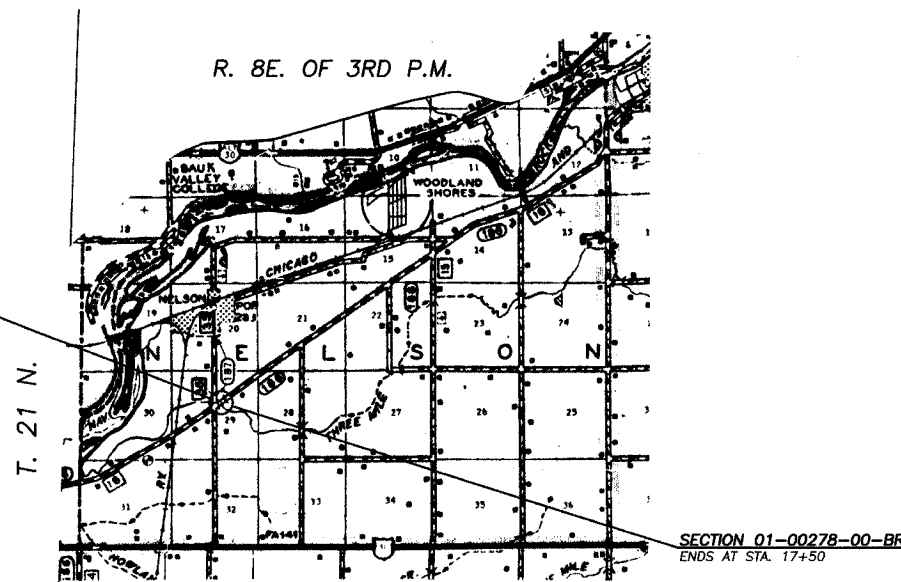
INDEX OF SHEETS

1. COVER SHEET
2. SCHEDULE OF QUANTITIES AND TYPICAL SECTIONS
3. PLAN AND PROFILE
- 4-5. CROSS SECTIONS
6. GENERAL PLAN AND ELEVATION OF BRIDGE
7. SUPERSTRUCTURE
8. SUBSTRUCTURE
9. SUBSTRUCTURE DETAILS
10. STEEL BRIDGE RAIL, TYPE SM
11. PILING DETAILS

- STANDARDS:
- 280001-02 TEMPORARY EROSION CONTROL SYSTEMS
 - 515001-02 NAME PLATE FOR BRIDGES
 - 630001-05 STEEL PLATE BEAM GUARD RAIL
 - 630301-03 SHOULDER WIDENING FOR TYPE 1 TRAFFIC BARRIER TERMINALS
 - 631026-02 TRAFFIC BARRIER TERMINAL, TYPE 5 AND 5A
 - 635006-02 REFLECTOR AND TERMINAL MARKER PLACEMENT
 - 702001-05 TRAFFIC CONTROL DEVICES
 - BLR 21-6 TYPICAL APPLICATION OF TRAFFIC CONTROL DEVICES
 - BLR 23-1 TRAFFIC BARRIER TERMINAL TYPE 1



SECTION 01-00278-00-BR
BEGINS AT STA. 12+55



SECTION 01-00278-00-BR
ENDS AT STA. 17+50

LOCATION MAP

NET LENGTH = 495 FEET = 0.094 MILE

LOCATION MAP SCALE

0 1 2 MI.

0 30 60 FT.

0 5 10 FT.

0 5 10 FT.

0 5 10 FT.

PLAN & PROFILE

HORIZONTAL

VERTICAL

CROSS SECTIONS

HORIZONTAL

VERTICAL

OPERATES 24 Hours
365 Days
CALL JULIE 1-800-892-0123
WITH THE HOLOGRAM
COUNTY - LEE
TOWNSHIP - NELSON
SAC. 6 & SEC. NO. 29 N.E. 1/4 SEC. 29
48 Hours Before You Dig.
ENCLOSING DIST., S.W., & H.O.L.O.G.R.A.M.



Scott A. Brown 7/29/2004
DATE

SCOTT A. BROWN
DIXON, ILLINOIS
ILLINOIS LICENSED PROFESSIONAL
ENGINEER NO. 062-053649
EXPIRES 11-30-2005

LEE COUNTY HIGHWAY DEPARTMENT

APPROVED OCTOBER 15, 2004

Russ Renner, P.E., S.E.
LEE COUNTY ENGINEER

STATE OF ILLINOIS
DEPARTMENT OF TRANSPORTATION

PASSED OCTOBER 19, 2004

District Engineer of Local Roads & Streets

APPROVED OCTOBER 19, 2004

District Engineer

PLANS PREPARED BY:

WENDLER ENGINEERING SERVICES

DIXON, ILLINOIS
SYCAMORE, ILLINOIS
PRINCETON, ILLINOIS