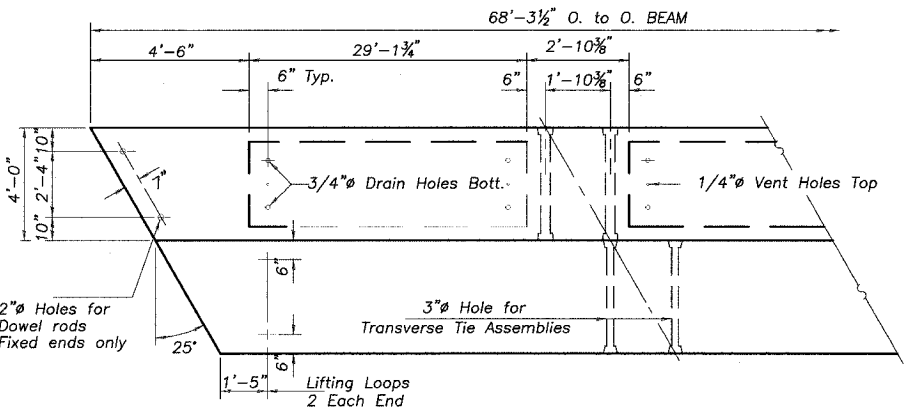
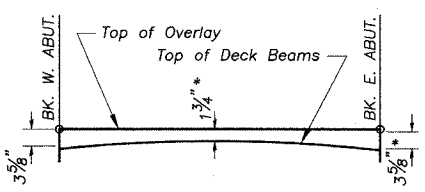


ELEVATION

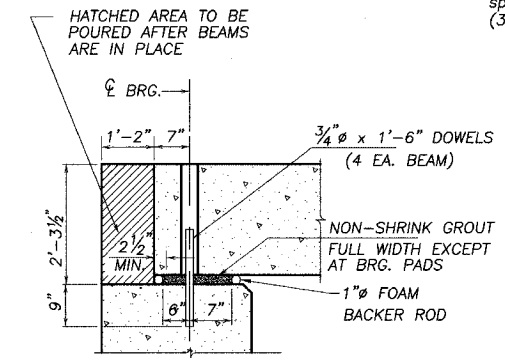


PLAN

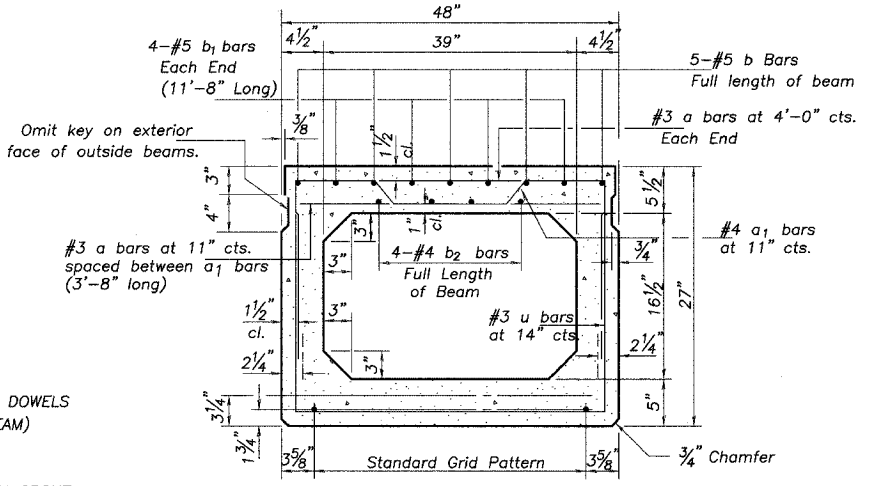


OVERLAY THICKNESS DETAIL

* Thickness of Bit, Overlay and Waterproofing Membrane System



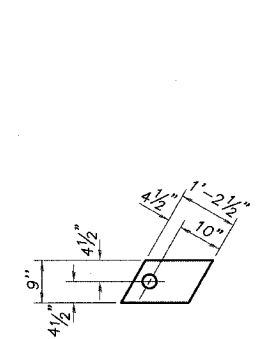
SECTION THRU ABUTMENT
(AT RIGHT ANGLES)



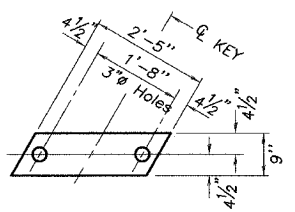
TYPICAL SECTION THRU 27"x48" BEAM

23-1/2 Strands Each Strand Stressed to 30,900 Lbs.
8-Strands 1 1/4 up, 13-Strands 3/4 up, 2-Strands 6" up

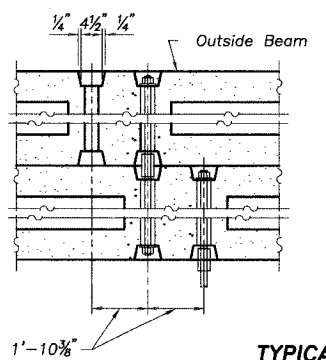
Note: Place strands symmetrically about centerline of beam.



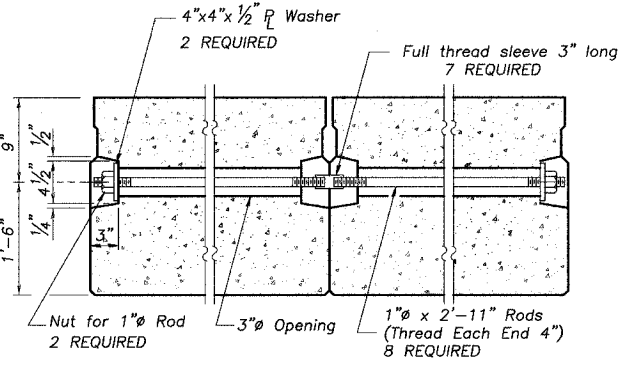
FABRIC BEARING PAD
(Exterior)



FABRIC BEARING PAD
(Interior)



TYPICAL TRANSVERSE TIE ASSEMBLY



GENERAL NOTES

PRESTRESSING STEEL SHALL BE UNCOATED HIGH STRENGTH, STRESS-RELIEVED 7-WIRE STRAND, GRADE 270. THE NOMINAL DIAMETER SHALL BE 1/2" AND THE NOMINAL CROSS-SECTIONAL AREA SHALL BE 0.153 SQ. IN. LIFTING LOOPS SHALL BE 3 - 1/2" DIAMETER - 270 ksi STRANDS, AS SHOWN.

THE 1" DIAMETER RODS IN THE TRANSVERSE TIE ASSEMBLY SHALL BE TIGHTENED TO A SNUG FIT AND THE THREADS SET. POCKETS THAT RECEIVE TRANSVERSE TIE BAR ON OUTSIDE SHALL BE FILLED WITH GROUT AFTER TRANSVERSE TIE ASSEMBLY IS IN PLACE.

REINFORCEMENT BARS SHALL CONFORM TO THE REQUIREMENTS OF AASHTO M-31, M-42 OR M-53, GRADE 60. THE BEARING SEAT SURFACES SHALL BE ADJUSTED BY SHIMMING TO ASSURE FIRM AND EVEN BEARING. TWO 1/8" FABRIC ADJUSTING SHIMS OF THE DIMENSIONS OF THE EXTERIOR BEARING PAD SHALL BE PROVIDED FOR EACH BEARING.

KEYWAY SURFACES SHALL BE CLEANED TO REMOVE FORM OIL OR OTHER BOND BREAKING MATERIAL PRIOR TO SHIPMENT OF THE BEAMS. CLEANING SHALL BE DONE BY SANDBLASTING THE KEYWAY AREAS BETWEEN TOP OF THE BEAM AND THE BOTTOM EDGE OF THE KEY.

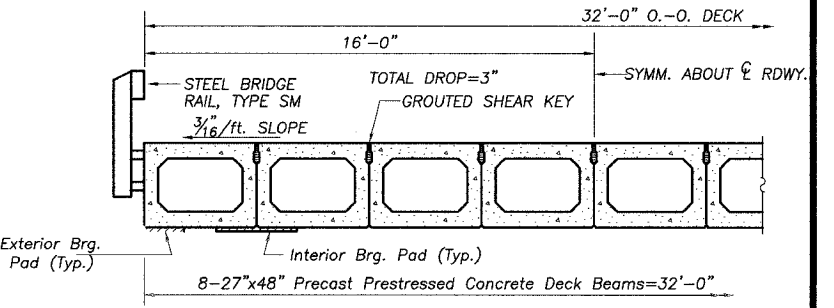
REQUIRED RELEASE STRENGTH, f'ci, SHALL BE 4200 p.s.i.

AN EQUAL SUBSTITUTION OF THE LOW-RELAXATION STRANDS FOR THE STRESS-RELIEVED STRANDS WILL BE PERMITTED.

ALL TRANSVERSE TIE-ASSEMBLIES (NUTS, BOLTS, AND WASHERS) SHALL BE HOT-DIPPED GALVANIZED.

AFTER THE DECK BEAMS HAVE BEEN SET, 1 1/4" DIAMETER HOLES SHALL BE DRILLED INTO THE BRIDGE SUB-STRUCTURE AND THE DOWEL RODS GROUTED IN PLACE, AND ALLOWED TO CURE A MINIMUM OF 24 HOURS PRIOR TO GROUTING THE SHEAR KEYS ON THE DECK.

LONGITUDINAL SHEAR KEYS AND DOWEL HOLES SHALL BE FILLED WITH AN APPROVED GROUT.

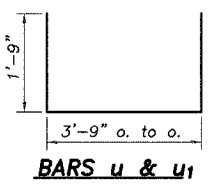


TYPICAL HALF CROSS SECTION

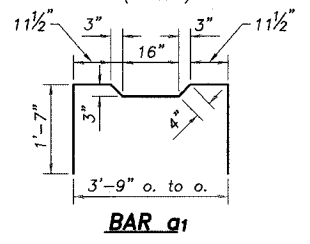
BILL OF MATERIAL

ITEM	QUANTITY
PRECAST PRESTRESSED CONCRETE DECK BEAMS (27"DEPTH)	2186 SQ. FT.
PROTECTIVE COAT*	34 SQ. YD.

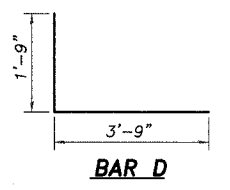
*PROTECTIVE COAT QUANTITY INCLUDES THE SIDES OF THE DECK.



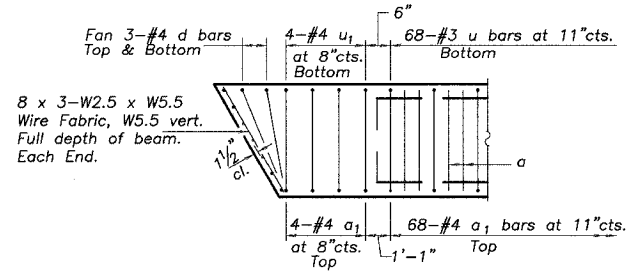
BARS u & u1



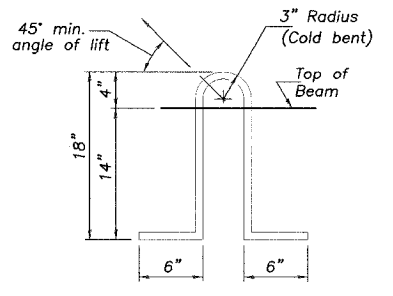
BAR a1



BAR D



END PLAN



LIFTING LOOP DETAIL