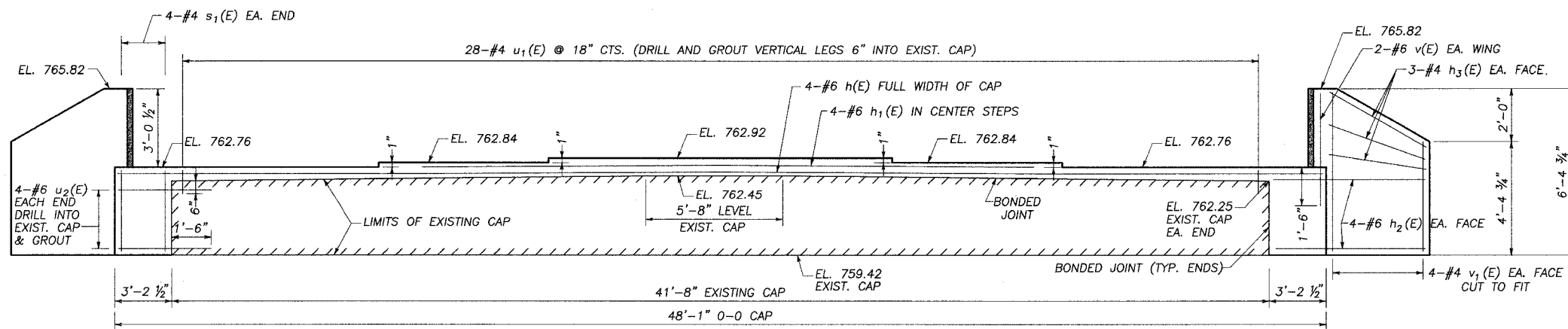


FAS ROUTE NO.	SEC	COUNTY	TOTAL SHEETS	SHEET NO
-	*	DEKALB	26	24

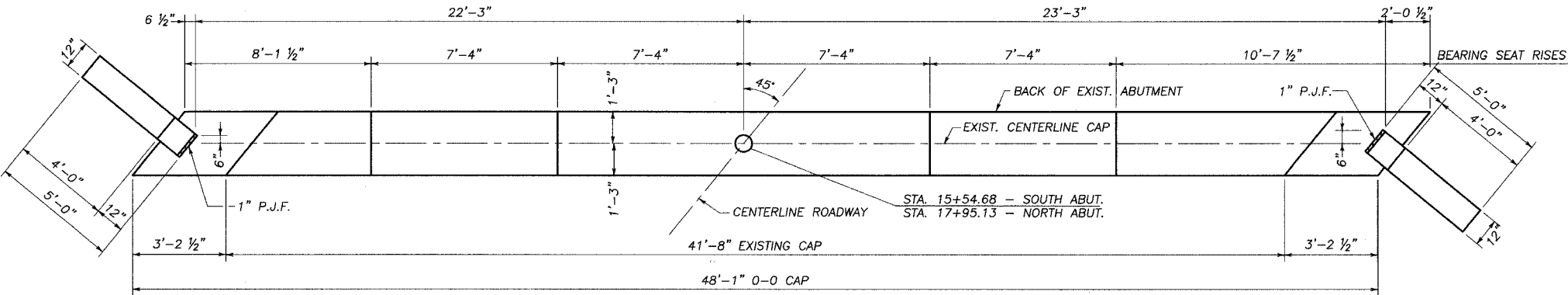
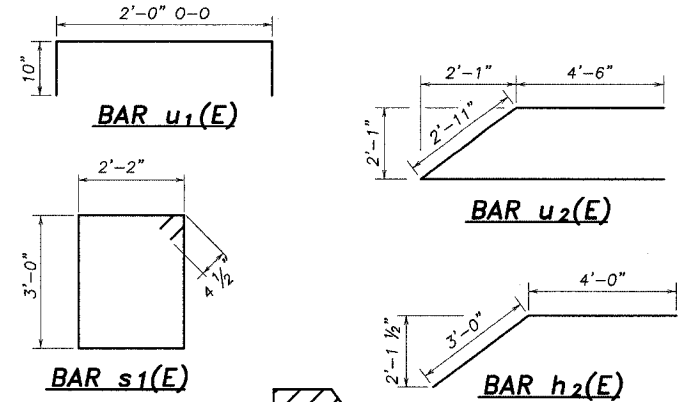
ILLINOIS PROJECT BRS-
* 99-00103-01-BR

BRIDGE SHEET 9 OF 10

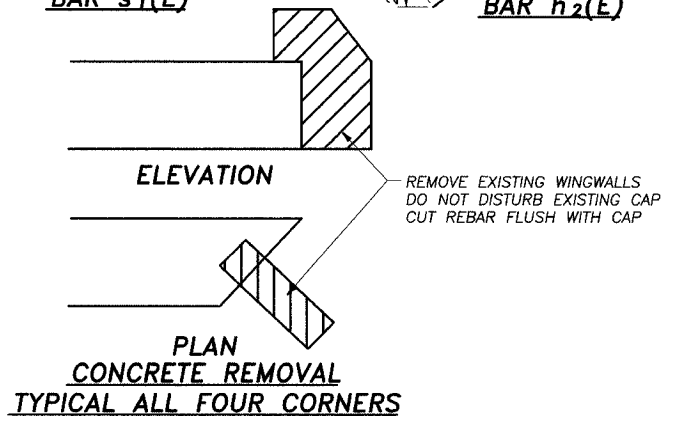


ELEVATION - ABUTMENTS

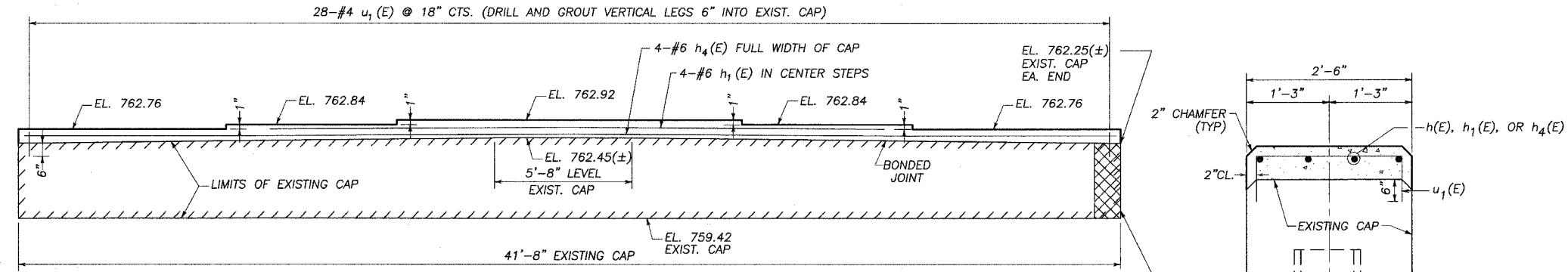
NOTE: WINGWALLS ABOVE TOP OF CAP SHALL NOT BE POURED UNTIL THE DECK AND ABUTMENT DIAPHRAGM ARE POURED AND CURED



PLAN - ABUTMENTS

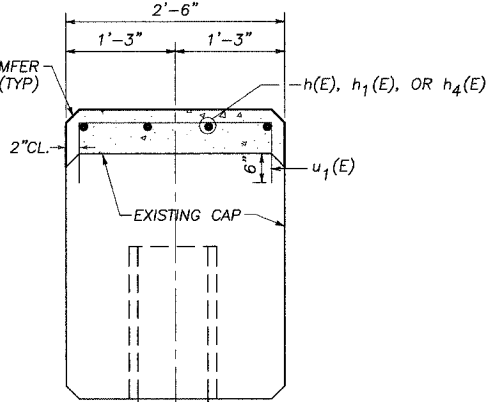


PLAN CONCRETE REMOVAL TYPICAL ALL FOUR CORNERS

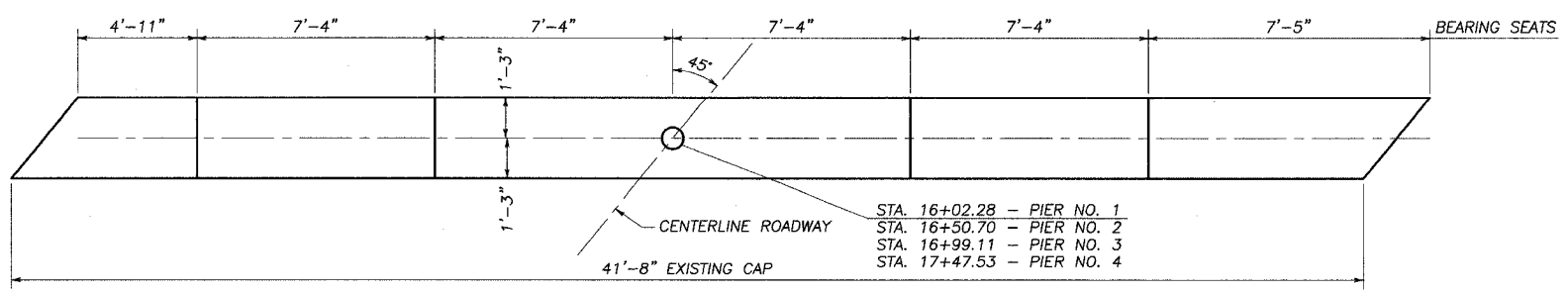


ELEVATION - PIERS

FORMED CONCRETE REPAIR (DEPTH GREATER THAN 5 INCHES) EACH END EACH CAP AS DIRECTED BY THE ENGINEER.



SECTION THRU PIERS AND ABUTMENTS



PLAN - PIERS

BILL OF MATERIAL - SUBSTRUCTURE

BAR	NO.	SIZE	LENGTH	SHAPE
h (E)	8	#6	47'-9"	—
h1 (E)	24	#6	29'-0"	—
h2 (E)	32	#6	7'-0"	—
h3 (E)	24	#4	5'-0"	—
h4 (E)	16	#6	41'-4"	—
s1 (E)	168	#4	11'-1"	□
u1 (E)	16	#4	3'-8"	—
u2 (E)	16	#6	14'-0"	—
v (E)	8	#6	4'-4"	—
v1 (E)	32	#4	6'-2"	—
CONCRETE REMOVAL			cu. yd.	2.1
CONCRETE STRUCTURES			cu. yd.	19.2
REINFORCEMENT BARS, EPOXY CTD.			pound	4080
* STRUCTURE EXCAVATION			CU. YD.	44
FORMED CONCRETE REPAIR (DEPTH GREATER THAN 5 INCHES)			SQ. FT.	120

BARS DESIGNATED (E) SHALL BE EPOXY COATED.
* STRUCTURE EXCAVATION INCLUDES 22 CU. YDS. AT EACH ABUTMENT

SUBSTRUCTURE SECTION 99-00103-01-BR
KIRKLAND ROAD
DEKALB COUNTY
S.N. 019-3040