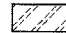




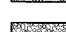
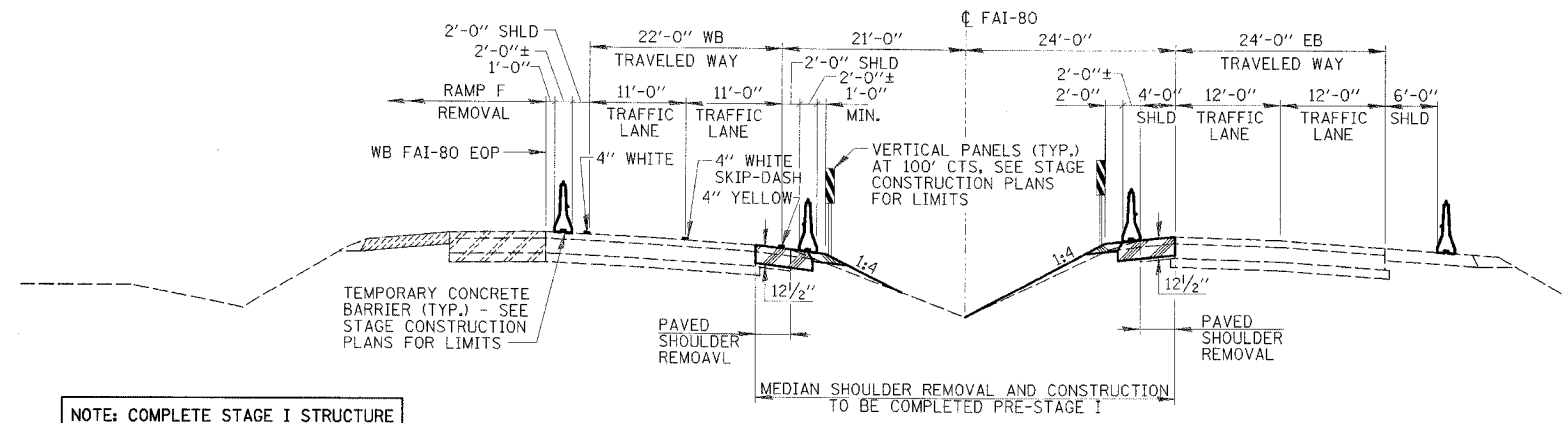


RTE.	SECTION	COUNTY	TOTAL SHEETS	SHEET NO.
FAI80	(50-2)HBR	LA SALLE	460	54
STA.		TO STA.		
FED. ROAD DIST. NO.		ILLINOIS FED. AID PROJECT		

CONTRACT NO. 86603

LEGEND

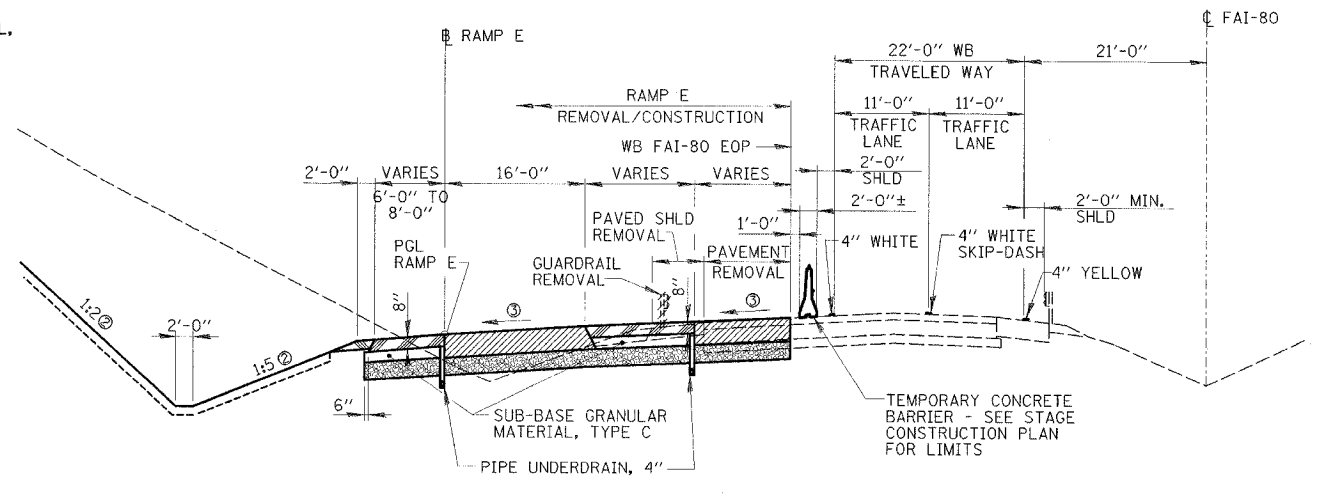
-  PAVEMENT REMOVAL
-  PAVED SHOULDER REMOVAL
-  BITUMINOUS CONCRETE PAVEMENT (FULL DEPTH), SUPERPAVE, 16"
-  BITUMINOUS SHOULDERS, SUPERPAVE, 8" OR 12 1/2"
-  AGGREGATE SHOULDERS, TYPE B
-  SUB-BASE GRANULAR MATERIAL, TYPE A, 12"



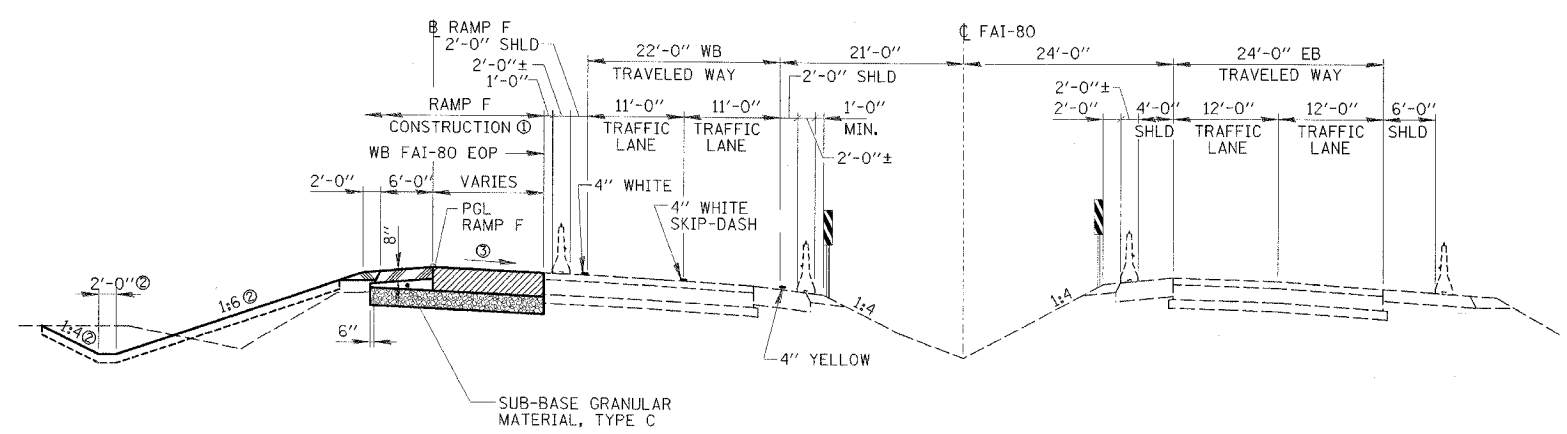
**FAI-80 & RAMP F
STAGE I REMOVAL/CONSTRUCTION**

NOTE: COMPLETE STAGE I STRUCTURE REMOVAL AND CONSTRUCTION IN THIS STAGE. SEE STRUCTURE PLANS FOR DETAILS.

- ① RAMP F CONSTRUCTION ADJACENT TO FAI-80 MAY COMMENCE IN STAGE I AS SOON AS REMOVAL OPERATIONS ALLOW AND MUST BE COMPLETED PRIOR TO TEMPORARY CONCRETE BARRIER REMOVAL.
- ② & VARIES (SEE CROSS SECTIONS).
- ③ VARIES. SEE PROFILE SHEETS AND RAMP TERMINAL ELEVATIONS SHEETS FOR DETAILS.

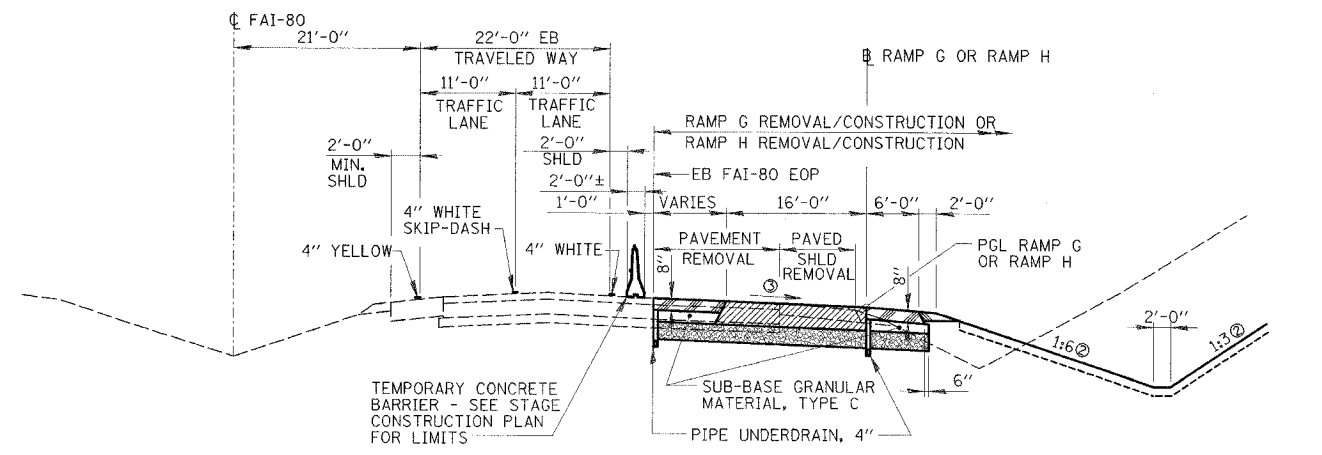


**FAI-80 & RAMP E
STAGES IIIa AND IIIb REMOVAL/CONSTRUCTION**



**FAI-80 & RAMP F
STAGE II REMOVAL/CONSTRUCTION**

NOTE: COMPLETE STAGE II STRUCTURE REMOVAL AND CONSTRUCTION IN THIS STAGE. SEE STRUCTURE PLANS FOR DETAILS. COMPLETE INERTIAL BARRIER INSTALLATIONS BEFORE REMOVING TEMPORARY CONCRETE BARRIER.



**FAI-80 & RAMPS G & H
STAGES IVa, IVb, Va, AND Vb
REMOVAL/CONSTRUCTION**

REVISIONS	NAME

ILLINOIS DEPARTMENT OF TRANSPORTATION

STAGE CONSTRUCTION SECTIONS

F.A.I. 80 AT ILLINOIS ROUTE 351

F.A.I. 80

SCALE: NONE DRAWN BY: DWH
DATE: 09/04 CHECKED BY: MTD