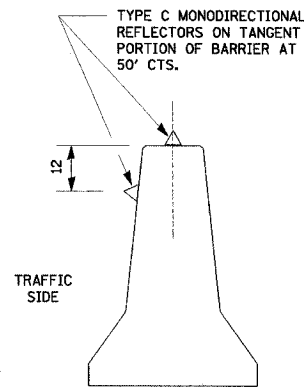
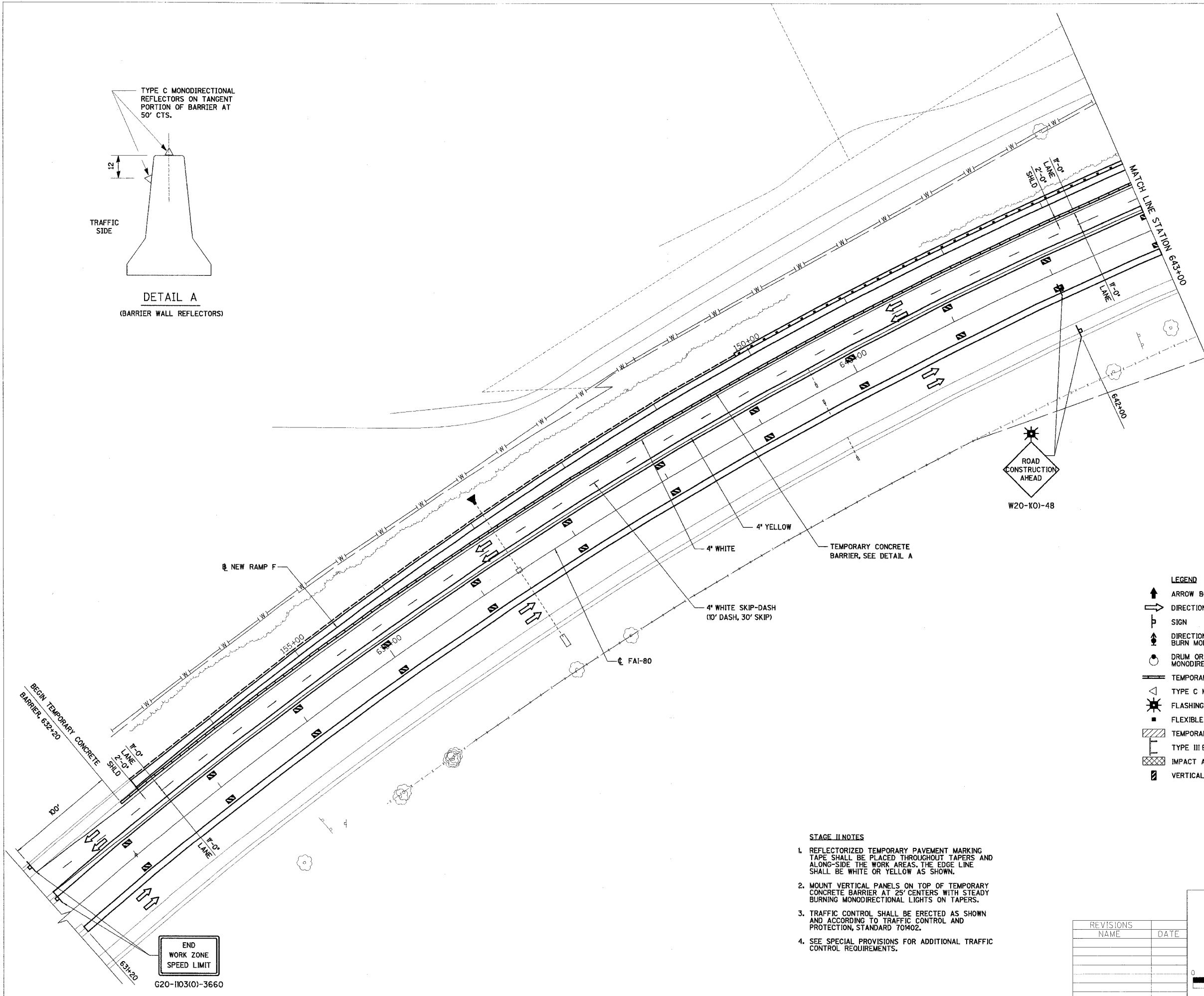


RTE.	SECTION	COUNTY	TOTAL SHEETS	SHEET NO.
FAI 80	(50-2)HBR	LA SALLE	460	60
STA. 631+20	TO STA. 643+00			
FED. ROAD DIST. NO.	ILLINOIS	FED. AID PROJECT		

CONTRACT NO. 86603



DETAIL A
(BARRIER WALL REFLECTORS)



LEGEND

- ARROW BOARD
- DIRECTION OF TRAFFIC
- SIGN
- DIRECTION INDICATOR BARRICADE WITH STEADY BURN MONODIRECTIONAL LIGHT
- DRUM OR BARRICADE WITH STEADY BURN MONODIRECTIONAL LIGHT
- TEMPORARY CONCRETE BARRIER
- TYPE C MONODIRECTIONAL REFLECTOR
- FLASHING LIGHT
- FLEXIBLE DELINEATOR
- TEMPORARY WIDENING
- TYPE III BARRICADE
- IMPACT ATTENUATORS
- VERTICAL PANEL

- STAGE II NOTES**
- REFLECTORIZED TEMPORARY PAVEMENT MARKING TAPE SHALL BE PLACED THROUGHOUT TAPERS AND ALONG-SIDE THE WORK AREAS. THE EDGE LINE SHALL BE WHITE OR YELLOW AS SHOWN.
 - MOUNT VERTICAL PANELS ON TOP OF TEMPORARY CONCRETE BARRIER AT 25' CENTERS WITH STEADY BURNING MONODIRECTIONAL LIGHTS ON TAPERS.
 - TRAFFIC CONTROL SHALL BE ERECTED AS SHOWN AND ACCORDING TO TRAFFIC CONTROL AND PROTECTION, STANDARD TOMO2.
 - SEE SPECIAL PROVISIONS FOR ADDITIONAL TRAFFIC CONTROL REQUIREMENTS.

REVISIONS	DATE
NAME	

ILLINOIS DEPARTMENT OF TRANSPORTATION

STAGE II CONSTRUCTION PLAN

F.A.I. 80 AT ILLINOIS ROUTE 351
STATION 631+20 TO STATION 643+00

SCALE IN FEET: 0 40 80

DATE: 09/04
DRAWN BY: MFS
CHECKED BY: MTD

END
WORK ZONE
SPEED LIMIT

G20-1103(O)-3660