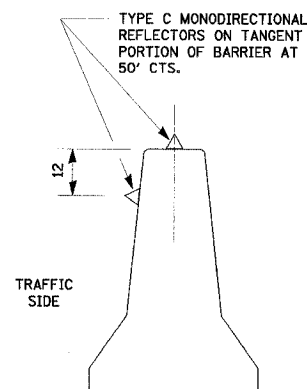
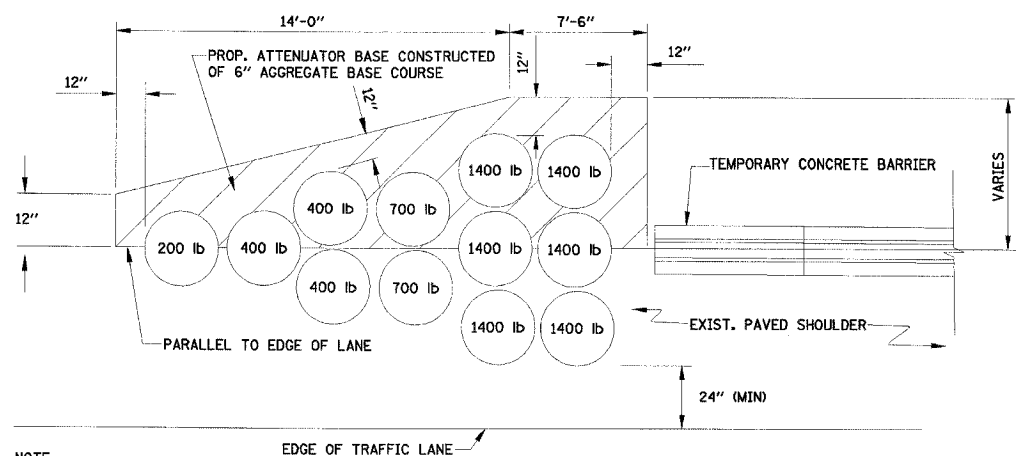


RTF.	SECTION	COUNTY	TOTAL SHEETS	SHEET NO.
FAI 80	150-21HR	LA SALLE	460	69
STA. 663+50		TO STA. 676+50		
FED. ROAD DIST. NO.		ILLINOIS FED. AID PROJECT		

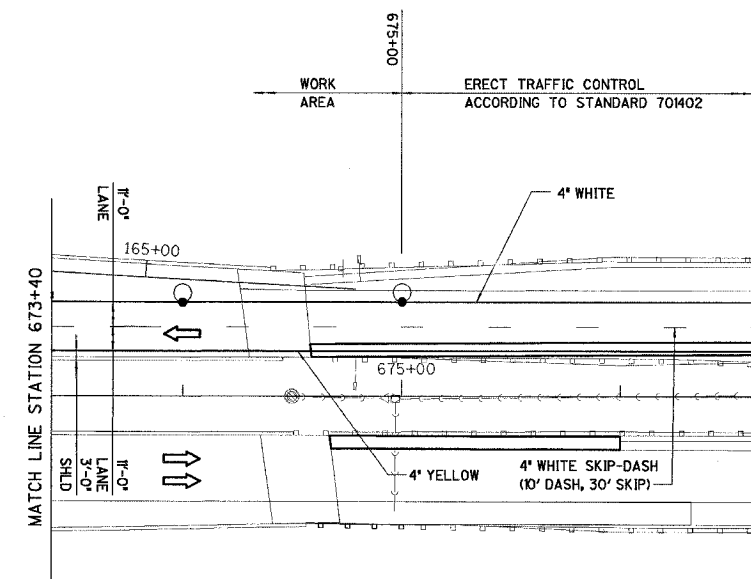
CONTRACT NO. 86603



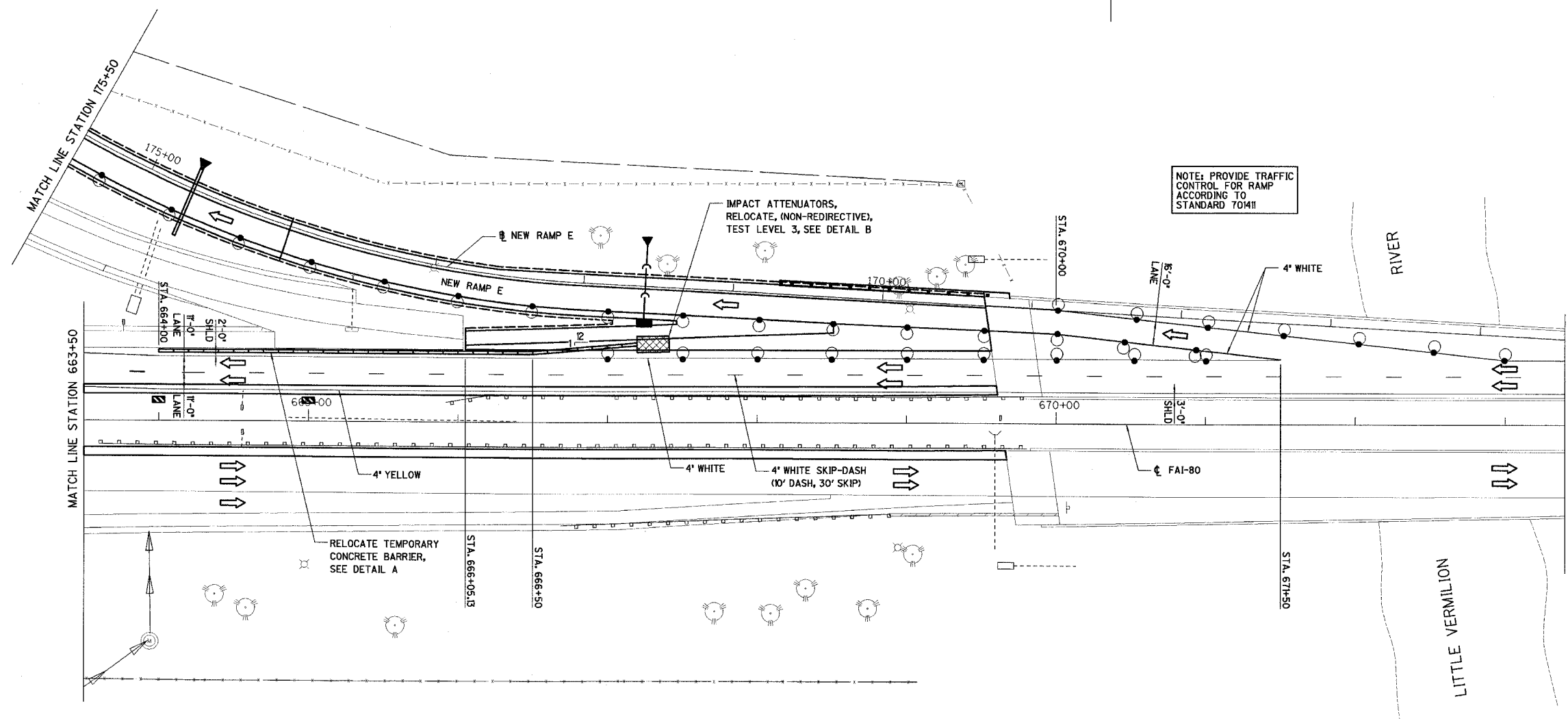
DETAIL A
(BARRIER WALL REFLECTORS)



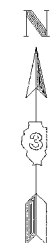
DETAIL B
IMPACT ATTENUATORS, TEMPORARY OR RELOCATED
(NON-REDIRECTIVE), TEST LEVEL 3



NOTE: ADVANCE WARNING SIGNS TO BE SAME AS STAGE IIIc



NOTE: PROVIDE TRAFFIC CONTROL FOR RAMP ACCORDING TO STANDARD 70411



REVISIONS	DATE
NAME	

ILLINOIS DEPARTMENT OF TRANSPORTATION

STAGE IIIb CONSTRUCTION PLAN

F.A.I. 80 AT ILLINOIS ROUTE 351
STATION 663+50 TO STATION 676+50

DATE: 09/04
DRAWN BY: MES
CHECKED BY: MTD

SCALE IN FEET