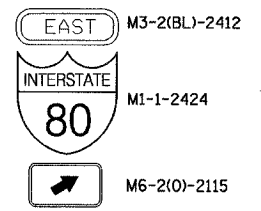
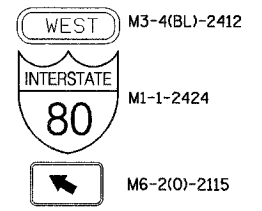
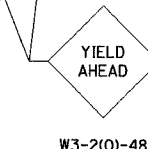
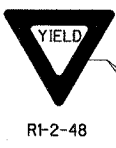
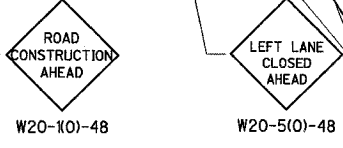
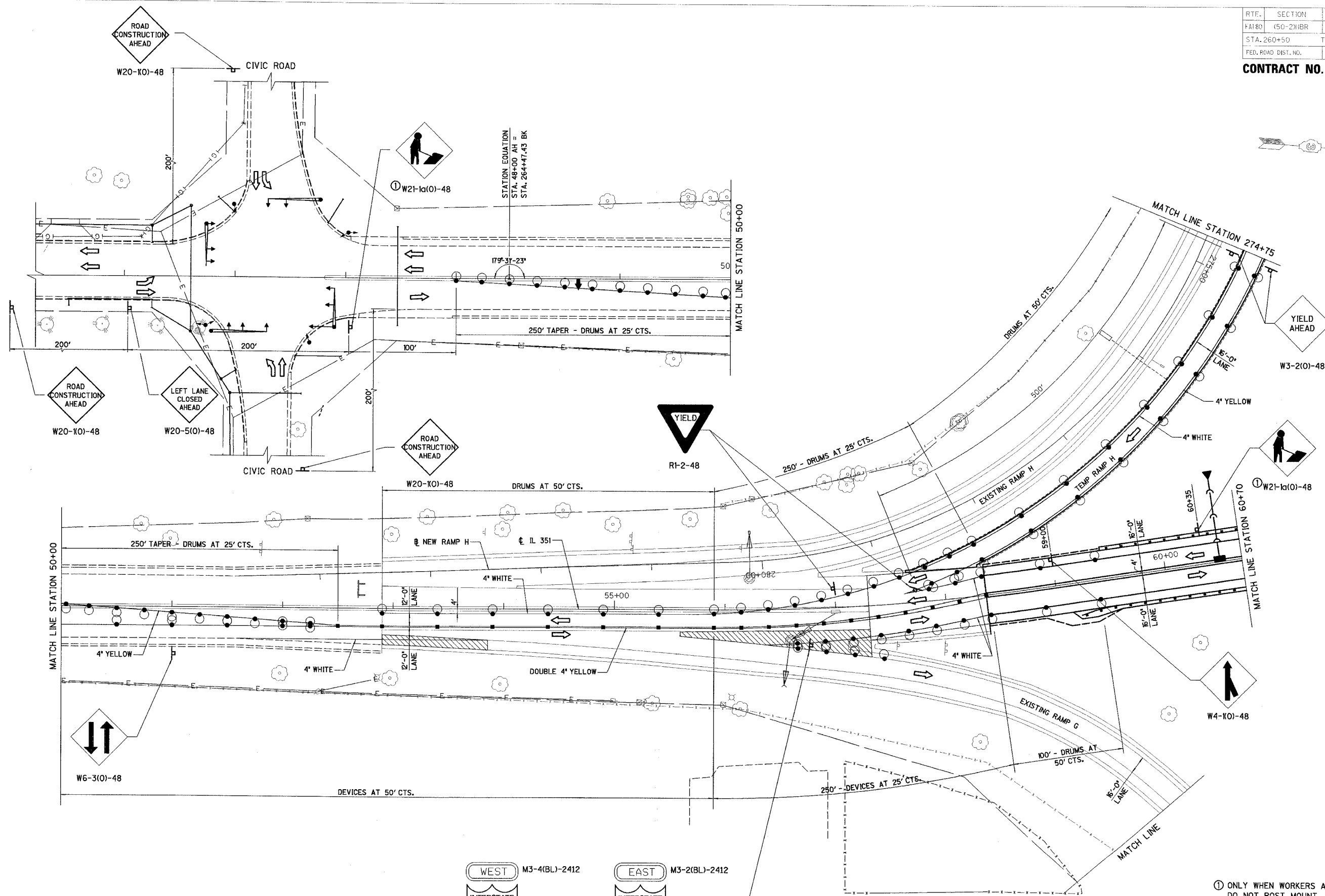


RT#	SECTION	COUNTY	TOTAL SHEETS	SHEET NO.
FA180	(50-2)NBR	LA SALLE	460	74
STA. 260+50		TO STA. 60+70		
FED. ROAD DIST. NO.		ILLINOIS FED. AID PROJECT		

CONTRACT NO. 86603



① ONLY WHEN WORKERS ARE PRESENT. DO NOT POST MOUNT.

ILLINOIS DEPARTMENT OF TRANSPORTATION

STAGE IVa CONSTRUCTION PLAN

F.A.I. 80 AT ILLINOIS ROUTE 351
STATION 260+50 TO STATION 60+70

DATE: 09/04
DRAWN BY: MES
CHECKED BY: MTD

SCALE IN FEET

REVISIONS	NAME	DATE