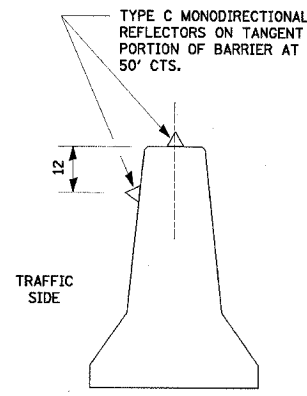
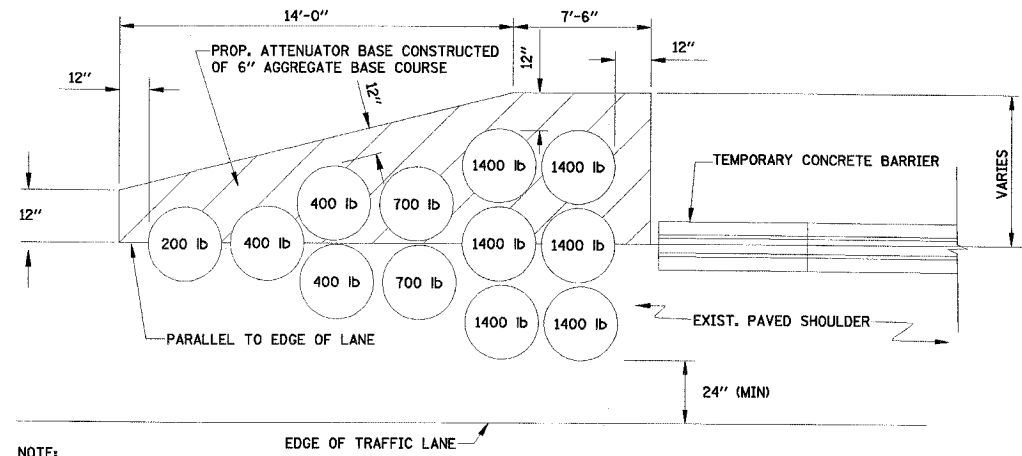


ROUTE	SECTION	COUNTY	TOTAL SHEETS	SHEET NO.
FAI 80	50-2HBR	LA SALLE	460	76
STA. 643+00		TO STA. 653+75		
FED. ROAD DIST. NO.		ILLINOIS FED. AID PROJECT		

**CONTRACT NO. 86603**

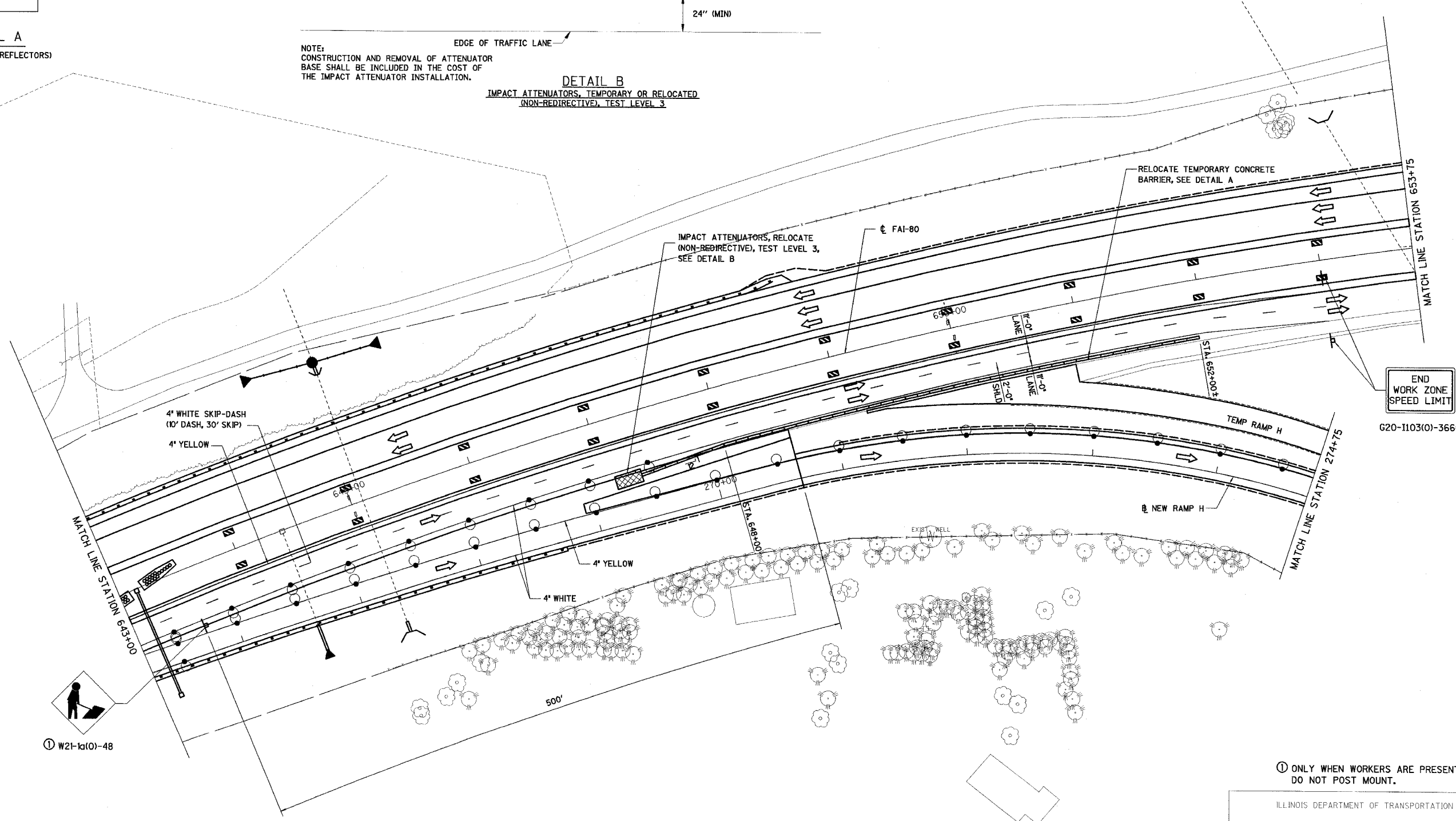


**DETAIL A**  
(BARRIER WALL REFLECTORS)



**DETAIL B**  
IMPACT ATTENUATORS, TEMPORARY OR RELOCATED  
(NON-REDIRECTIVE), TEST LEVEL 3

NOTE:  
CONSTRUCTION AND REMOVAL OF ATTENUATOR  
BASE SHALL BE INCLUDED IN THE COST OF  
THE IMPACT ATTENUATOR INSTALLATION.



END  
WORK ZONE  
SPEED LIMIT

G20-1103(0)-3660



① ONLY WHEN WORKERS ARE PRESENT.  
DO NOT POST MOUNT.

REVISIONS	DATE

ILLINOIS DEPARTMENT OF TRANSPORTATION

**STAGE IVb CONSTRUCTION PLAN**

F.A.I. 80 AT ILLINOIS ROUTE 351  
STATION 643+00 TO STATION 653+75

DATE: 09/04  
DRAWN BY: MES  
CHECKED BY: MTD

SCALE IN FEET: 0 40 80