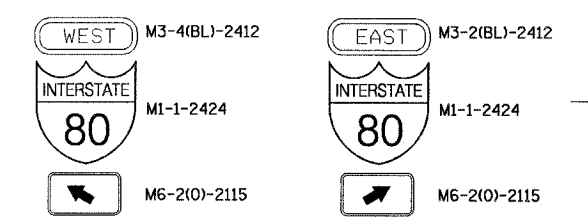
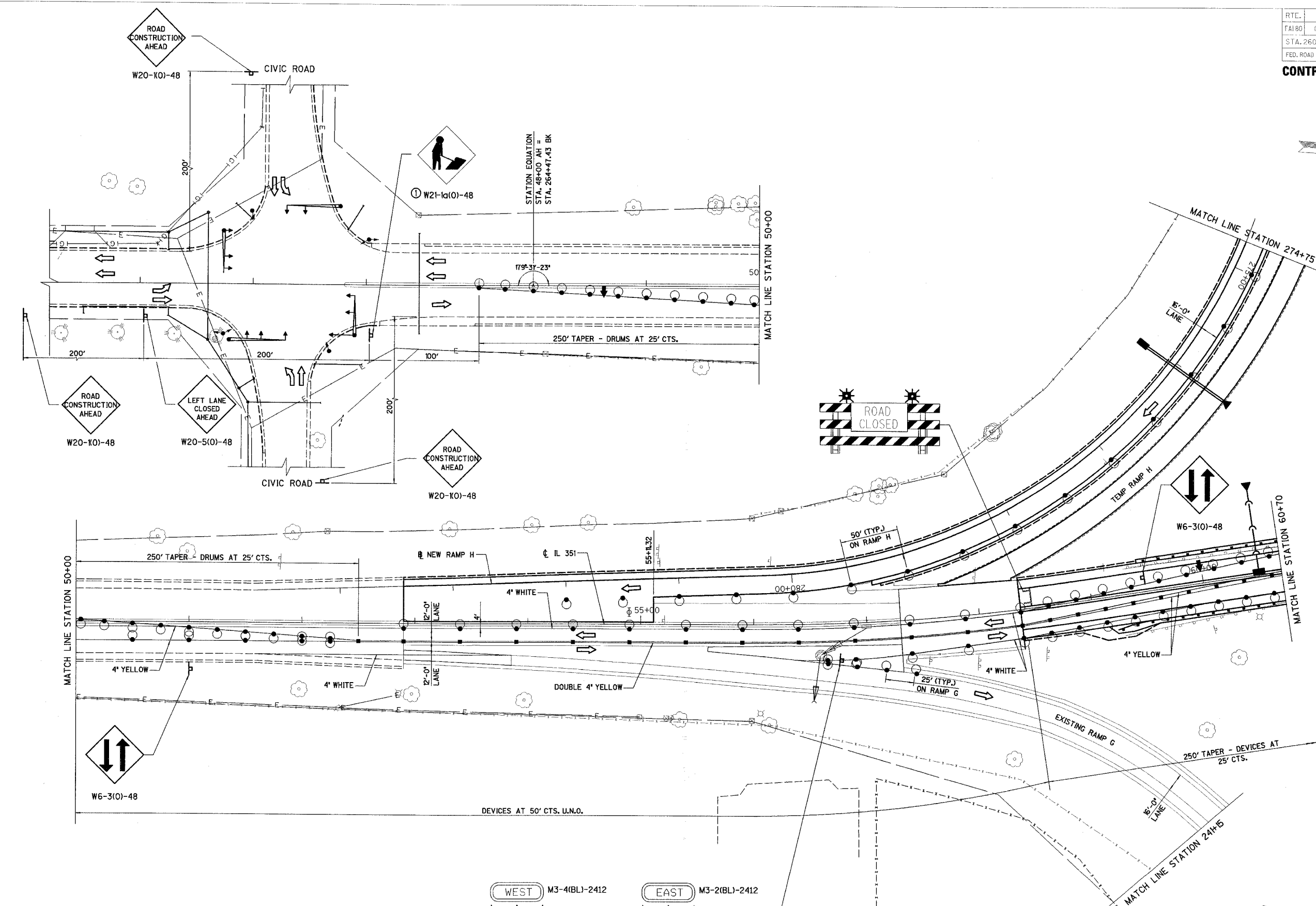


ROUTE	SECTION	COUNTY	TOTAL SHEETS	SHEET NO.
FAI 80	150-21HBR	LA SALLE	460	78
STA. 260+50		TO STA. 60+70		
FED. ROAD DIST. NO.		ILLINOIS FED. AID PROJECT		

CONTRACT NO. 86603



① ONLY WHEN WORKERS ARE PRESENT.
DO NOT POST MOUNT.

ILLINOIS DEPARTMENT OF TRANSPORTATION
STAGE IVb CONSTRUCTION PLAN
 F.A.I. 80 AT ILLINOIS ROUTE 351
 STATION 260+50 TO STATION 60+70
 DATE: 09/04
 DRAWN BY: MES
 CHECKED BY: MTD

REVISIONS	DATE

