

ROUTE	SECTION	COUNTY	TOTAL SHEETS	SHEET NO.
FAI 80	(50-2)HBR	LA SALLE	40	79
STA. 653+75		TO STA. 663+50		
FED. ROAD DIST. NO.		ILLINOIS FED. AID PROJECT		

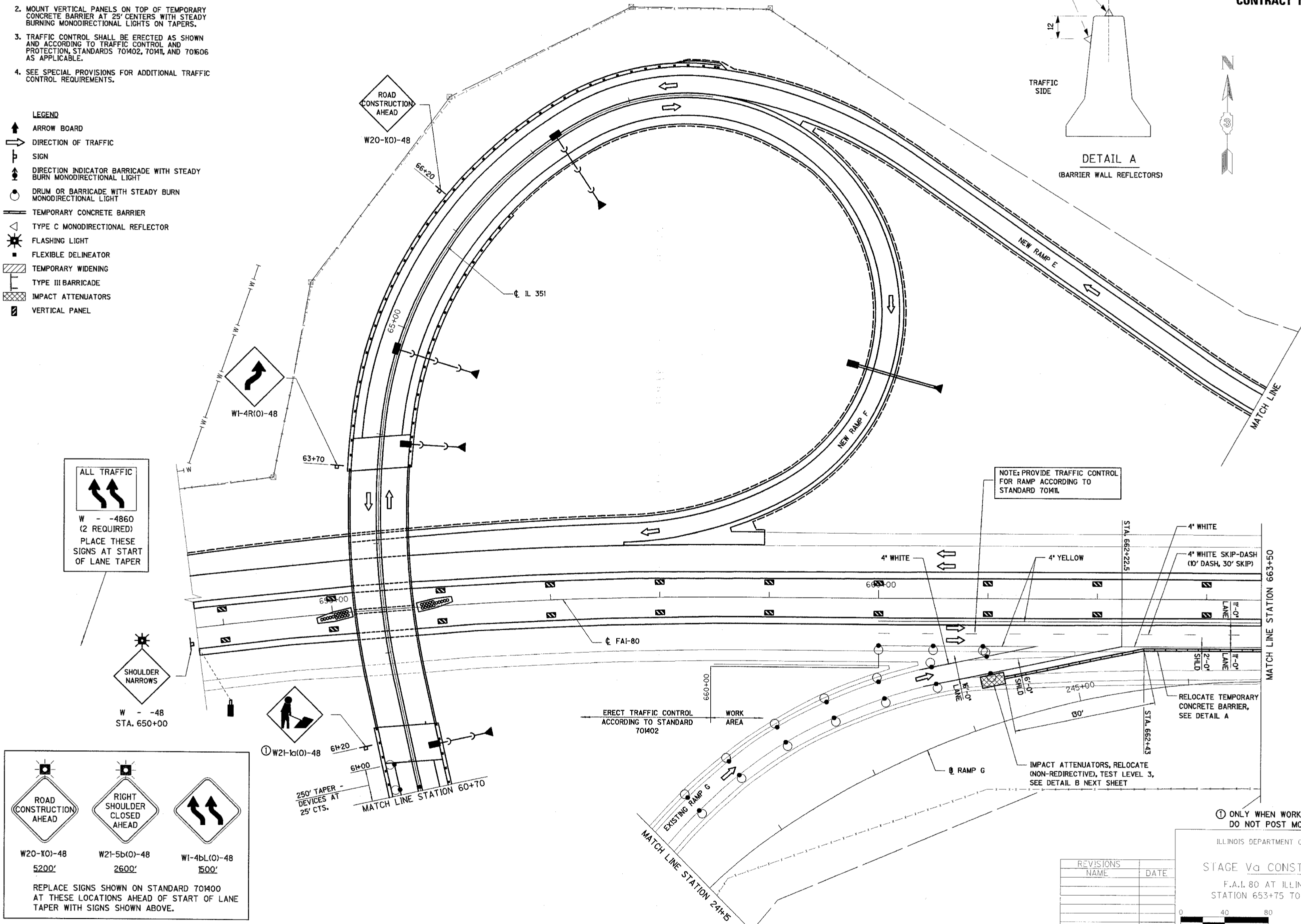
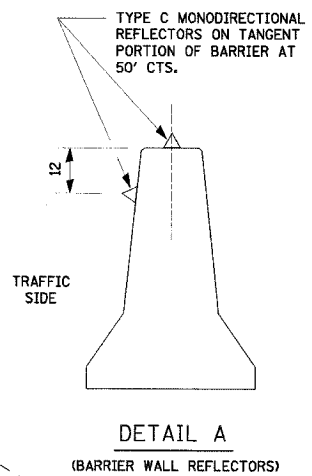
CONTRACT NO. 86603

STAGE V_a NOTES

- REFLECTORIZED TEMPORARY PAVEMENT MARKING TAPE SHALL BE PLACED THROUGHOUT TAPERS AND ALONG-SIDE THE WORK AREAS. THE EDGE LINE SHALL BE WHITE OR YELLOW AS SHOWN.
- MOUNT VERTICAL PANELS ON TOP OF TEMPORARY CONCRETE BARRIER AT 25' CENTERS WITH STEADY BURNING MONODIRECTIONAL LIGHTS ON TAPERS.
- TRAFFIC CONTROL SHALL BE ERECTED AS SHOWN AND ACCORDING TO TRAFFIC CONTROL AND PROTECTION STANDARDS 70402, 70411, AND 701606 AS APPLICABLE.
- SEE SPECIAL PROVISIONS FOR ADDITIONAL TRAFFIC CONTROL REQUIREMENTS.

LEGEND

- ↑ ARROW BOARD
- DIRECTION OF TRAFFIC
- ⊥ SIGN
- ◆ DIRECTION INDICATOR BARRICADE WITH STEADY BURN MONODIRECTIONAL LIGHT
- DRUM OR BARRICADE WITH STEADY BURN MONODIRECTIONAL LIGHT
- ▬ TEMPORARY CONCRETE BARRIER
- △ TYPE C MONODIRECTIONAL REFLECTOR
- ⚡ FLASHING LIGHT
- FLEXIBLE DELINEATOR
- ▨ TEMPORARY WIDENING
- ⊥ TYPE III BARRICADE
- ▩ IMPACT ATTENUATORS
- ▭ VERTICAL PANEL



ALL TRAFFIC

 W - -4860
 (2 REQUIRED)
 PLACE THESE
 SIGNS AT START
 OF LANE TAPER

SHOULDER
 NARROWS

 W - -48
 STA. 650+00

W20-10(0)-48
 5200'

W21-5b(0)-48
 2600'

W1-4bL(0)-48
 500'

REPLACE SIGNS SHOWN ON STANDARD 70400 AT THESE LOCATIONS AHEAD OF START OF LANE TAPER WITH SIGNS SHOWN ABOVE.

NOTE: PROVIDE TRAFFIC CONTROL FOR RAMP ACCORDING TO STANDARD 70411.

ERECT TRAFFIC CONTROL ACCORDING TO STANDARD 70402

IMPACT ATTENUATORS, RELOCATE (NON-REDIRECTIVE), TEST LEVEL 3, SEE DETAIL B NEXT SHEET

① ONLY WHEN WORKERS ARE PRESENT. DO NOT POST MOUNT.

REVISIONS NAME	DATE

ILLINOIS DEPARTMENT OF TRANSPORTATION

STAGE V_a CONSTRUCTION PLAN

F.A.I. 80 AT ILLINOIS ROUTE 351
 STATION 653+75 TO STATION 663+50

DATE: 09/04
 DRAWN BY: MES/DWH
 CHECKED BY: MTD

0 40 80
 SCALE IN FEET