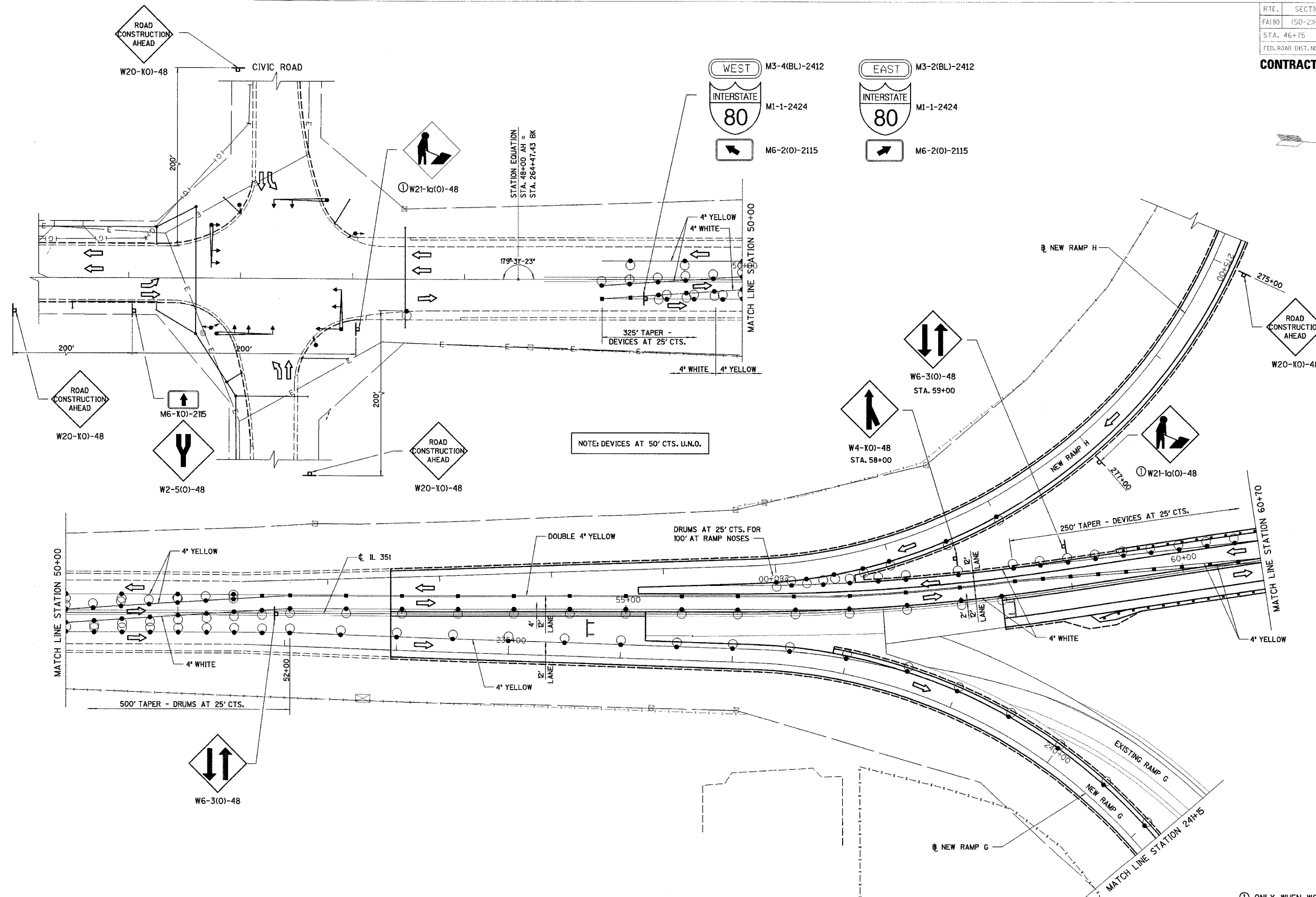


RTE.	SECTION	COUNTY	TOTAL SHEETS	SHEET NO.
FAI 80	(50-2)HBR	LA SALLE	460	84
STA. 46+75		TO STA. 60+70		
FED. ROAD DIST. NO.		ILLINOIS FED. AID PROJECT		

CONTRACT NO. 86603



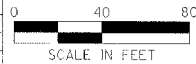
STATION EQUATION
 STA. 48+00 AH =
 STA. 264+47.43 BK

NOTE: DEVICES AT 50' CTS. U.N.O.

① ONLY WHEN WORKERS ARE PRESENT.
 DO NOT POST MOUNT.

ILLINOIS DEPARTMENT OF TRANSPORTATION
STAGE VB CONSTRUCTION PLAN
 F.A.I. 80 AT ILLINOIS ROUTE 351
 STATION 46+75 TO STATION 60+70

REVISIONS	DATE
NAME	



DATE: 09/04
 DRAWN BY: MES/LWH
 CHECKED BY: MTD