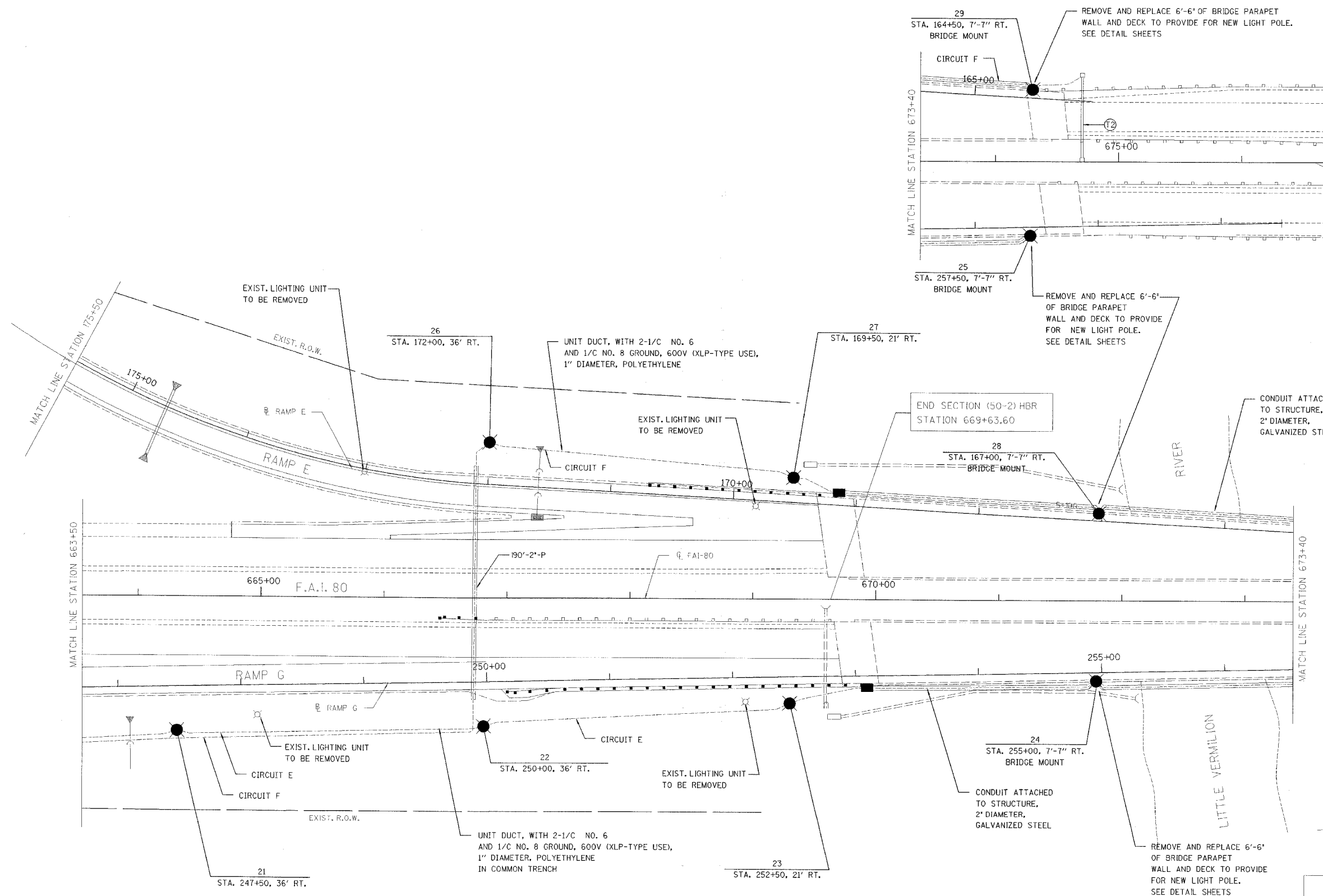


RTE.	SECTION	COUNTY	TOTAL SHEETS	SHEET NO.
FAI 80	(50-2)HBR	LA SALLE	460	104
STA. 663+50		TO STA. 676+50		
FED. ROAD DIST. NO.		ILLINOIS FED. AID PROJECT		

CONTRACT NO. 86603



REVISIONS	NAME	DATE

ILLINOIS DEPARTMENT OF TRANSPORTATION

ROADWAY LIGHTING PLAN

F.A.I. 80 AT ILLINOIS ROUTE 351
STATION 663+50 TO STATION 676+50

0 40 80
SCALE IN FEET

DATE: 09/04
DRAWN BY: JDK
CHECKED BY: MTD