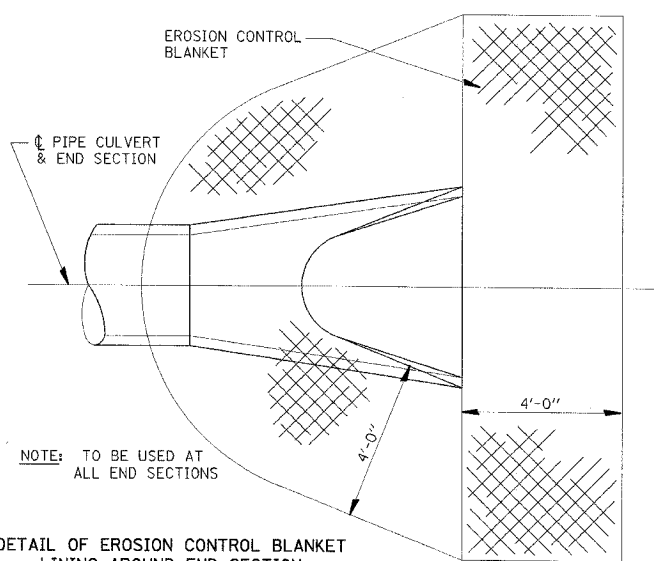


RT.	SECTION	COUNTY	TOTAL SHEETS	SHEET NO.
FAI-80	(50-2) HBR	LASALLE	460	122
STA.	TO STA.			
FED. ROAD DIST. NO.	ILLINOIS	FED. AID PROJECT		

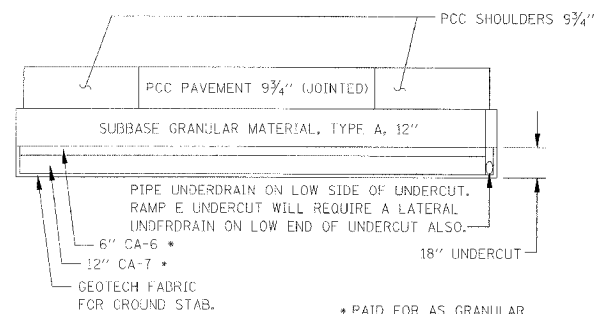
**CONTRACT NO. 86603**



NOTE: TO BE USED AT ALL END SECTIONS

**DETAIL OF EROSION CONTROL BLANKET LINING AROUND END SECTION**

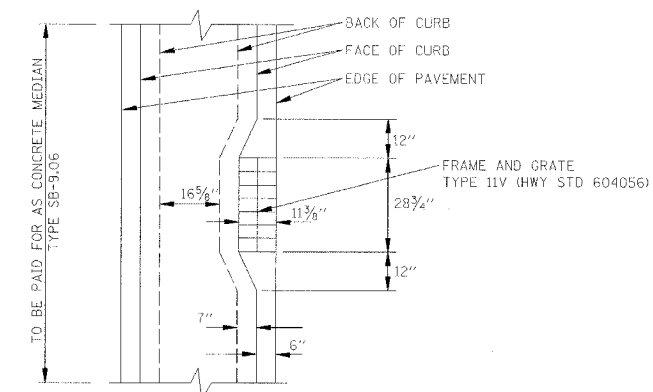
NOTE: PRC FLARED END SECTION SHOWN. TREATMENT SAME FOR OTHER END SECTIONS.



**UNDERCUT DETAIL**

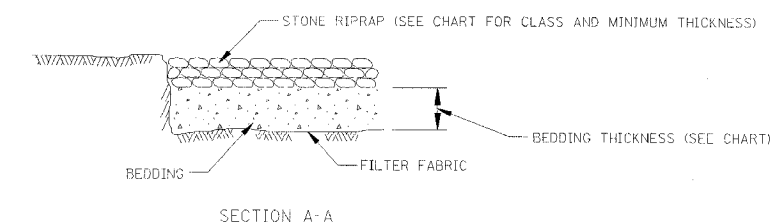
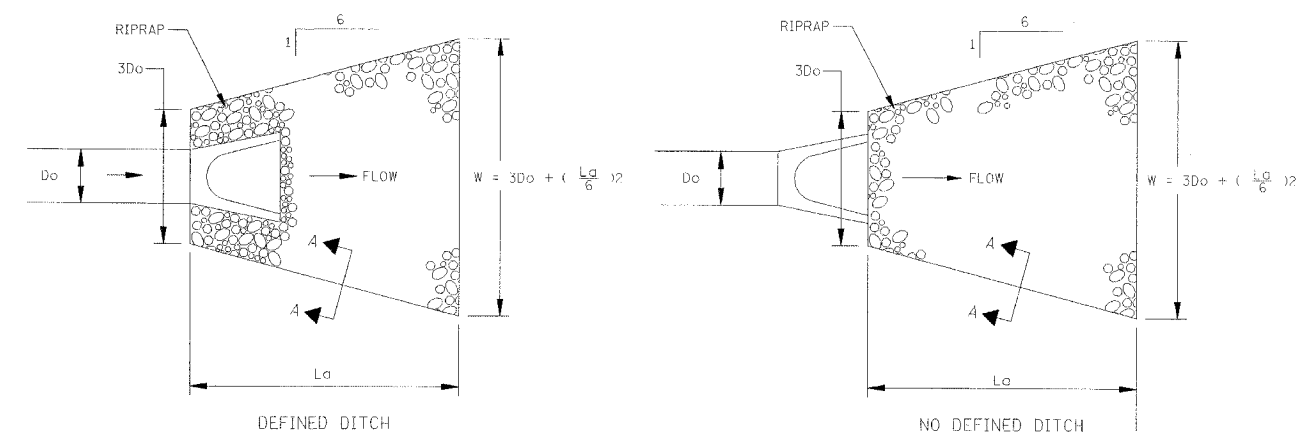
		EARTH EXC. CU. YD.	GEOTECH FABRIC SQ. YD.	CA-7* TON	CA-6* TON
RAMP E	STA. 177+20 TO 178+90	255	570	350	175
RAMP G	STA. 243+03 TO 245+13	315	700	430	215

\* PAID FOR AS GRANULAR EMBANKMENT, SPECIAL



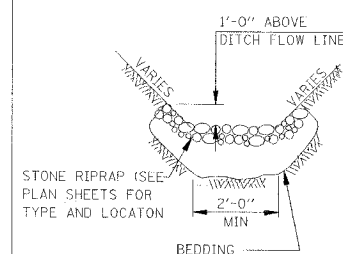
**INLET DETAIL IN TYPE SB-9.06 CONC. MEDIAN**

(SEE HIGHWAY STANDARDS 606301 AND 606401 FOR ADDITIONAL DETAILS)



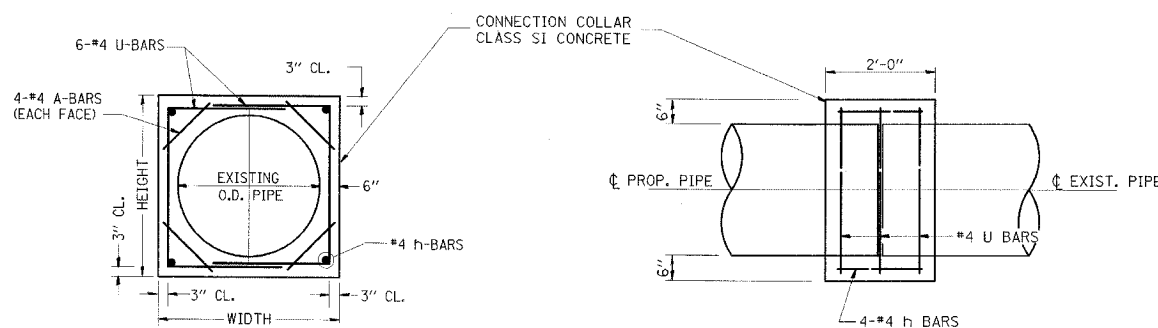
**SECTION A-A**

STRUCTURE NUMBER	LOCATION STA.	OFFSET	PIPE SIZE (in.)	DEFINED DITCH	3Do (FOOT)	La (FOOT)	W (FOOT)	RIPRAP			
								CLASS	MINIMUM THICKNESS (in.)	BEDDING THICKNESS (in.)	QUANTITY (SQ. YD.)
S-1	636+39.6	90.0' LT	36	YES	9	6.5	11.2	A4	16	6	4.3
S-1	266+60	42.0' RT	24	YES	6	6.5	8.2	A4	16	6	3.0
S-2	267+29	38.4' RI	36	YES	9	6.5	11.2	A4	16	6	4.3
S-2	61+09	45.3' RT	12	NO	3	10	6.3	A3	8	-	3.2
S-4	63+98	61.7' RT	12	YES	3	6.5	5.2	A3	8	-	1.4
S-6	64+80	78.1' RT	12	YES	3	6.5	5.2	A3	8	-	1.4
S-8	67+26	77.4' RT	12	YES	3	5	4.7	A3	8	-	0.8
S-16	246+14	26.0' RT	24	YES	6	6.5	8.7	A4	16	6	3.0
S-11	128+35	59.0' LT	24	NO	6	20	12.8	A4	16	6	26.0
S-13	243+60	32.5' RT	24	YES	6	6.5	8.2	A4	16	6	3.0
S-2	174+70	31.0' RT	30	YES	7.5	8	10.2	A4	16	6	5.6
S-3	246+88	32.0' RT	12	YES	3	6.5	5.2	A4	16	6	1.4
S-3	55+18	74.0' RT	12	YES	3	5	4.7	A3	8	-	0.8
S-7	58+07	55.8' RT	12	YES	3	8	5.7	A3	8	-	2.2
S-9	60+50	81.5' LT	12	NO	3	10	6.3	A3	8	-	3.2
S-10	276+02	84.0' LT	36	NO	9	20	15.7	A4	16	6	27.4



RIPRAP TYPE	MINIMUM RIPRAP THICKNESS (in.)	MINIMUM BEDDING THICKNESS (in.)
A3	8	—
A4	16	6
A5	22	8
A6	26	10
A7	30	12

REVISIONS NAME	DATE



LOCATION	EXISTING CULVERT SIZE	EXTENSION COLLAR		A-BAR			U-BAR			CONC. COLLAR CU. YD.	REINFORCEMENT BARS POUND
		WIDTH IN.	HEIGHT IN.	12 IN.	'X' IN.	'Y' IN.	18 IN.	IN.	IN.		
636+39.6	36	56	56	-	34	50	-	0.8	49		
144+03	36	56	56	-	34	50	-	0.8	49		
266+60	24	42	42	-	27	36	-	0.6	40		
267+29	36	56	56	-	34	50	-	0.8	49		
653+97	36	56	56	-	34	50	-	0.8	49		
246+14	24	42	42	-	27	36	-	0.6	40		

**COLLAR DETAIL (DIRECT PIPE CULVERT EXTENSION)**

MIN. LAP FOR #4 BAR IS 1'-6"

ILLINOIS DEPARTMENT OF TRANSPORTATION  
**ROADWAY AND DRAINAGE DETAILS**  
F.A.I. 80 AT ILLINOIS ROUTE 351

DATE: 05/04  
DRAWN BY: JDK  
CHECKED BY: MTD