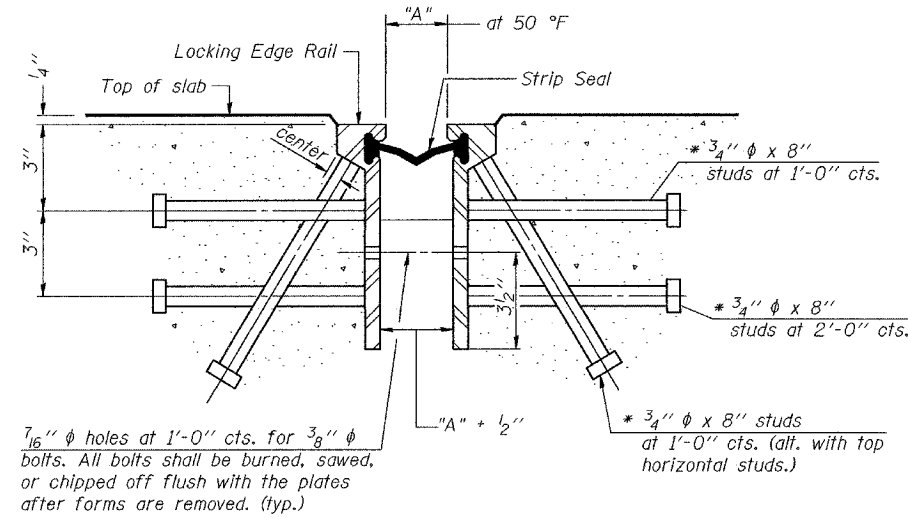


STATE OF ILLINOIS  
DEPARTMENT OF TRANSPORTATION

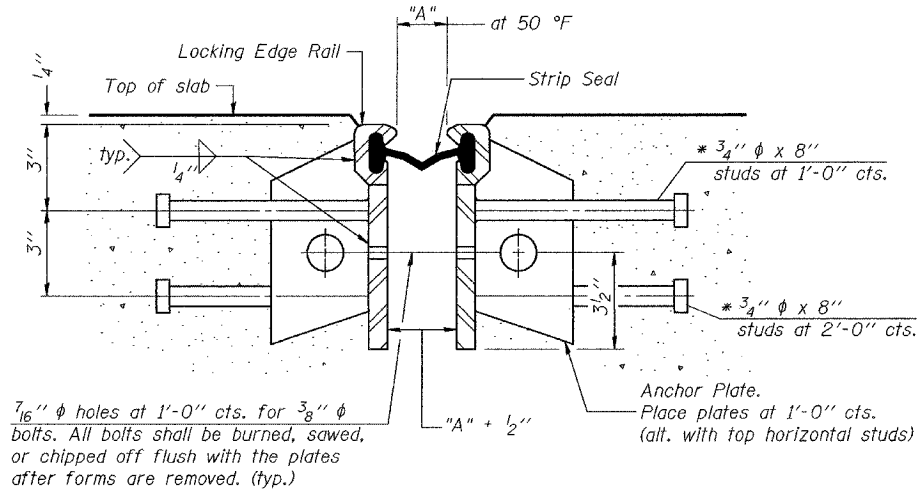
ROUTE NO.	SECTION	COUNTY	SHEET	SHEET NO. 16
F.A.I. 80	(50-2) HBR	LaSALLE	158	35 SHEETS
FED. ROAD DIST. NO. 7	ILLINOIS	FED. AID PROJECT	Contract No. 86603	



**SECTION THRU ROLLED RAIL EXP. JOINT**  
(544 Studs Required)

Required Strip Seal rated movement	"A"
1"	1 1/8"
2"	1 3/4"

\* Granular or solid flux filled headed studs conforming to Article 1006.32 of the Std. Specs., automatically end welded.



**SECTION THRU WELDED RAIL EXP. JOINT**

(336 Studs Required)  
(208 Anchor Plates Required)

**GENERAL NOTES**

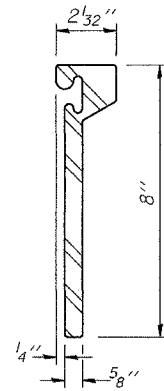
The strip seal shall be made continuous and shall have a minimum thickness of 1/4". The configuration of the strip seal shall match the configuration of the Locking Edge Rails.

The height and thickness of the Locking Edge Rails shown are minimum dimensions. The actual configuration of the Locking Edge Rails and matching strip seal may vary from manufacturer to manufacturer. Flanged edge rails will not be allowed.

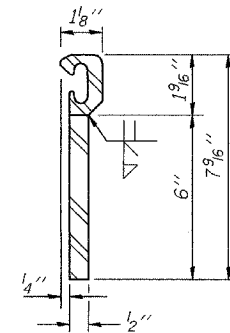
Locking Edge Rails may be spliced at slope discontinuities and stage construction joints.

The manufacturer's recommended installation methods shall be followed.

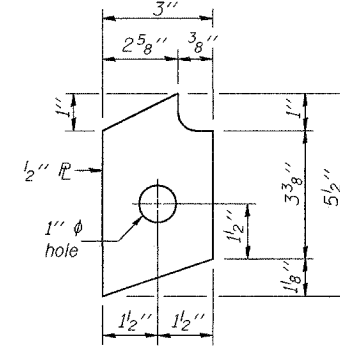
The joint opening and deck dimensions detailed on the superstructure are based on a preformed joint seal. If the contractor elects to use the alternate strip seal joint, the opening and deck dimensions shall be modified according to the dimensions detailed on this sheet. Required modifications shall be made at no additional cost to the State.



**ROLLED (EXTRUDED) RAIL**

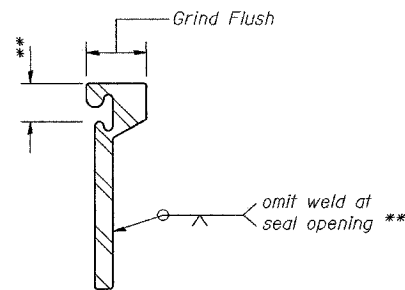


**WELDED RAIL**



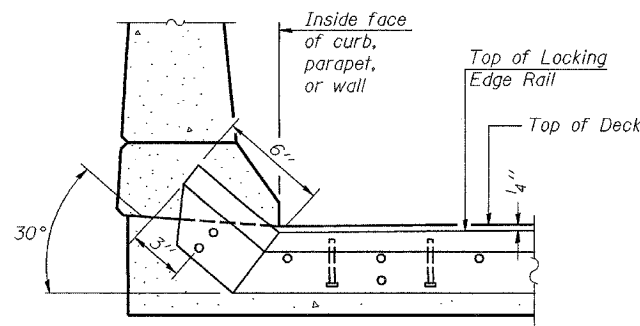
**ANCHOR PLATE**  
(for welded rail)

**LOCKING EDGE RAILS**

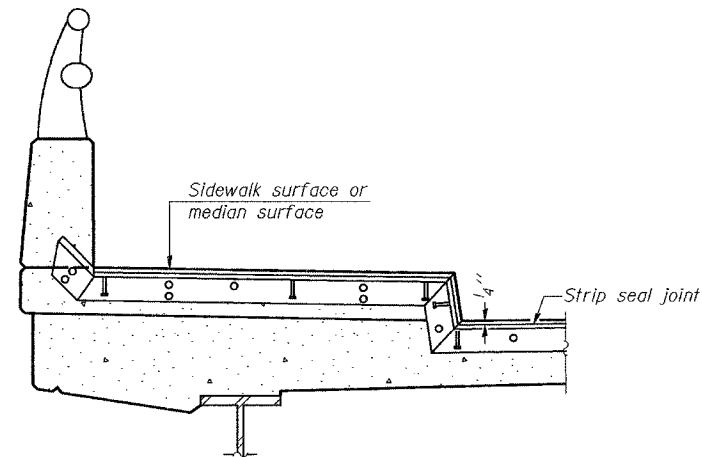


**LOCKING EDGE RAIL SPLICE**

The inside of the locking edge rail groove shall be free of weld residue.



**AT CURB, PARAPET, OR WALL**



**AT SIDEWALK OR MEDIAN\***

**TYPICAL END TREATMENTS**

\* Shorter plates with a single row of studs at 12" centers may be necessary on medians which are shallower than 9". See manufacturer's recommendation.

DESIGNED	CME
CHECKED	RLM
DRAWN	h.t. parsons
CHECKED	CME/RLM

EJ-BJS 9-01-03

EXAMINED	Nov. 29, 2004
PASSED	Thomas J. Damagala ENGINEER OF BRIDGE DESIGN
	Ralph E. Anderson ENGINEER OF BRIDGES AND STRUCTURES

(Sheet 2 of 2)  
**BRIDGE JOINT SYSTEM - EXPANSION**  
**(ALTERNATE-STRIP SEAL)**  
**F.A.I. RT. 80 - SEC. (50-2)HBR**  
**LaSALLE COUNTY**  
**STATION 62+39.22**  
**STRUCTURE NO. 050-0230**