

FAU RTE.	SECTION	COUNTY	TOTAL SHEETS	SHEET NO.
6108	(70XN & TS-1)	LA SALLE	466	244
STA. 242+00		TO STA. 247+00		
FED. ROAD DIST. NO.		ILLINOIS	FED. AID PROJECT	
CONTRACT NO. 86603				



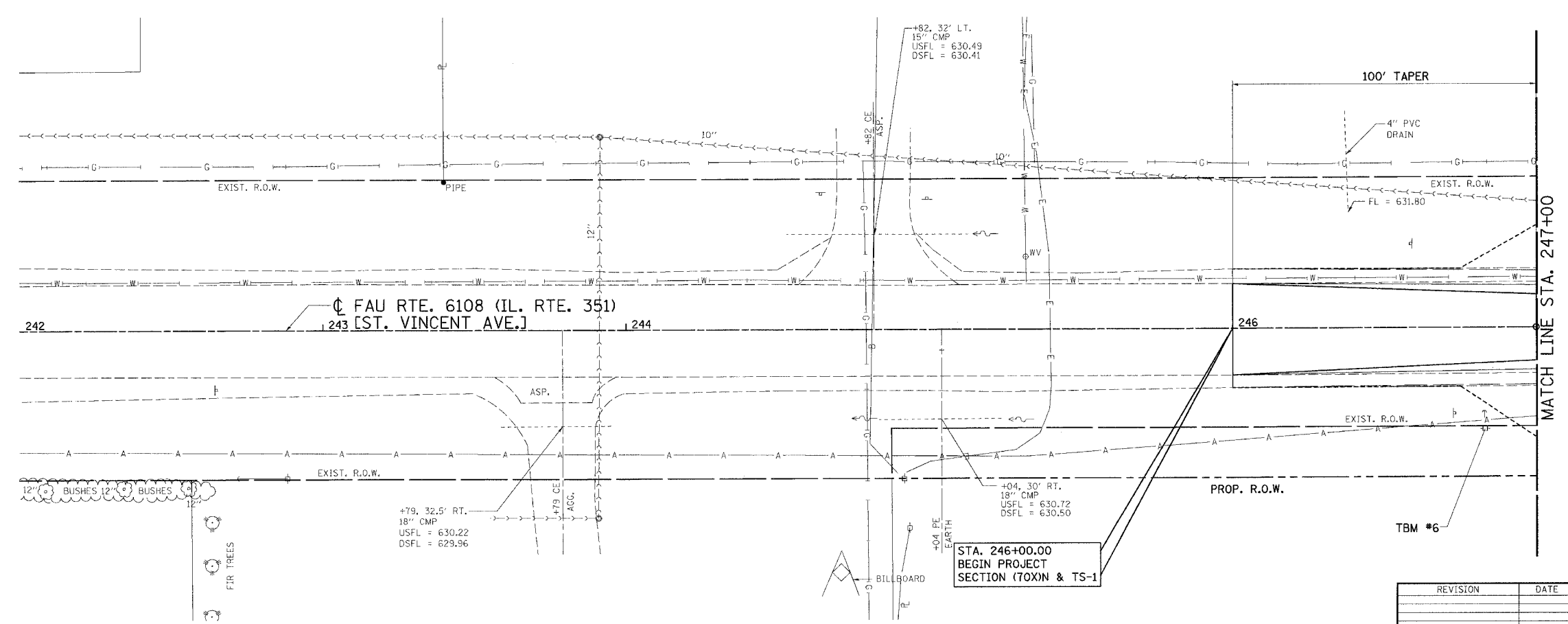
INT.	DATE	REASON

BY	DATE

INT.	DATE	NO.	REASON

BY	DATE

INT.	DATE	REASON

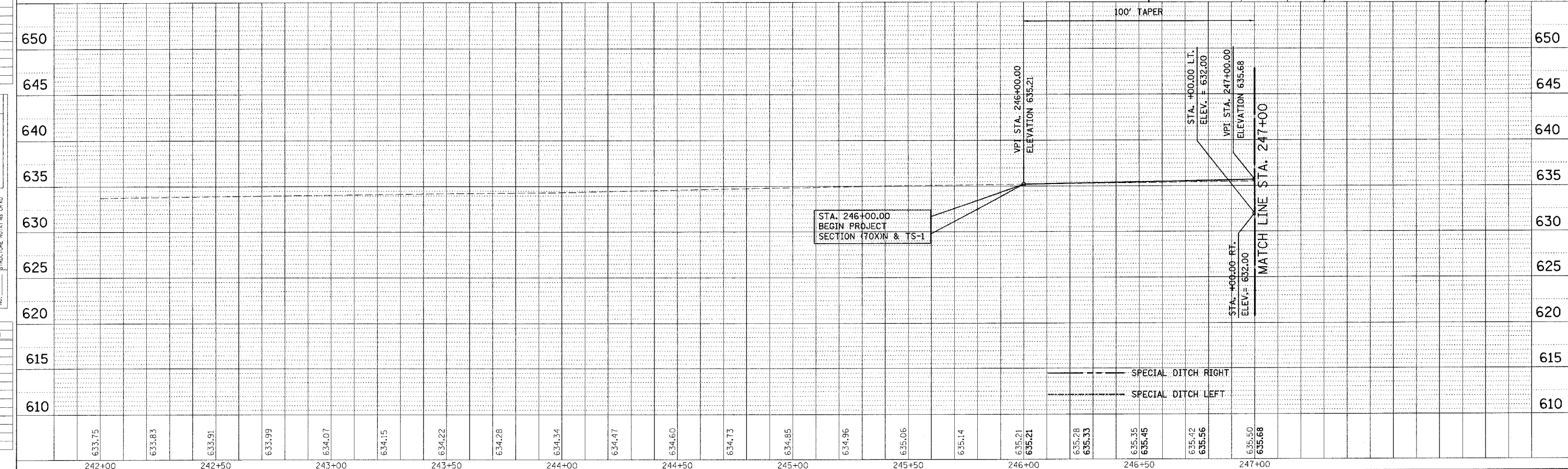


TBM #6: RAILROAD SPIKE IN POWER POLE
STA. 246+83, 34' RT.
ELEV. 633.90

REVISION	DATE	BY

GREENE & BRADFORD, INC.
OF SPRINGFIELD
CONSULTING ENGINEERS
1001 N. WASHINGTON ST., SUITE 200
SPRINGFIELD, ILLINOIS 62762
PHONE: 217-223-1111 FAX: 217-223-1112
E-MAIL: G&B@G&B.COM

COMPUTER FILE NO.
PLN351H-02
PROJECT: 01194.B.N
04/01/04-RPB



1D0TEPP - 1d 8/25/98

FAU RTE. 6108 (IL. RTE. 351) LA SALLE CO.