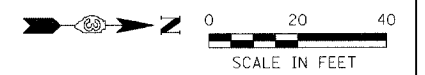
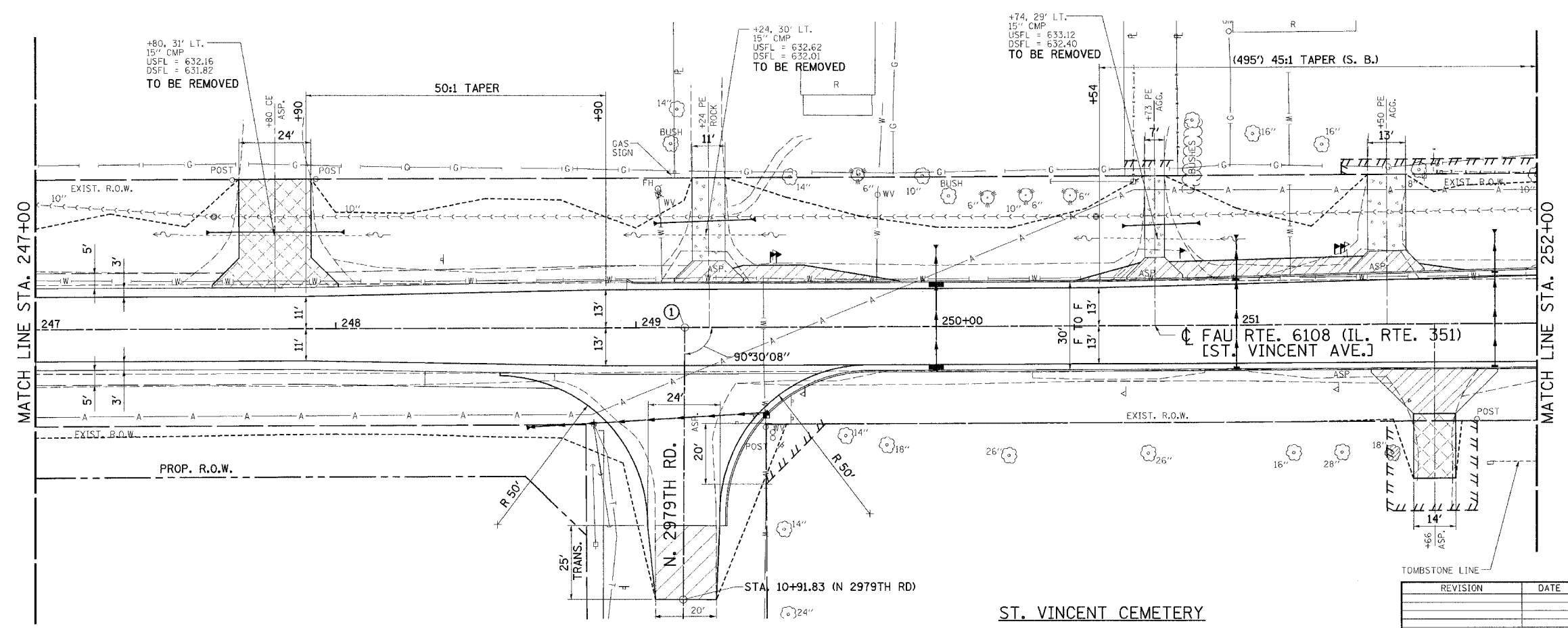


F.A.U. RTE.	SECTION	COUNTY	TOTAL SHEETS	SHEET NO.
6108	(70XIN & TS-1)	LA SALLE	460	245
STA. 247+00		TO STA. 252+00		
FED. ROAD DIST. NO.	ILLINOIS	FED. AID PROJECT		
CONTRACT NO. 86603				



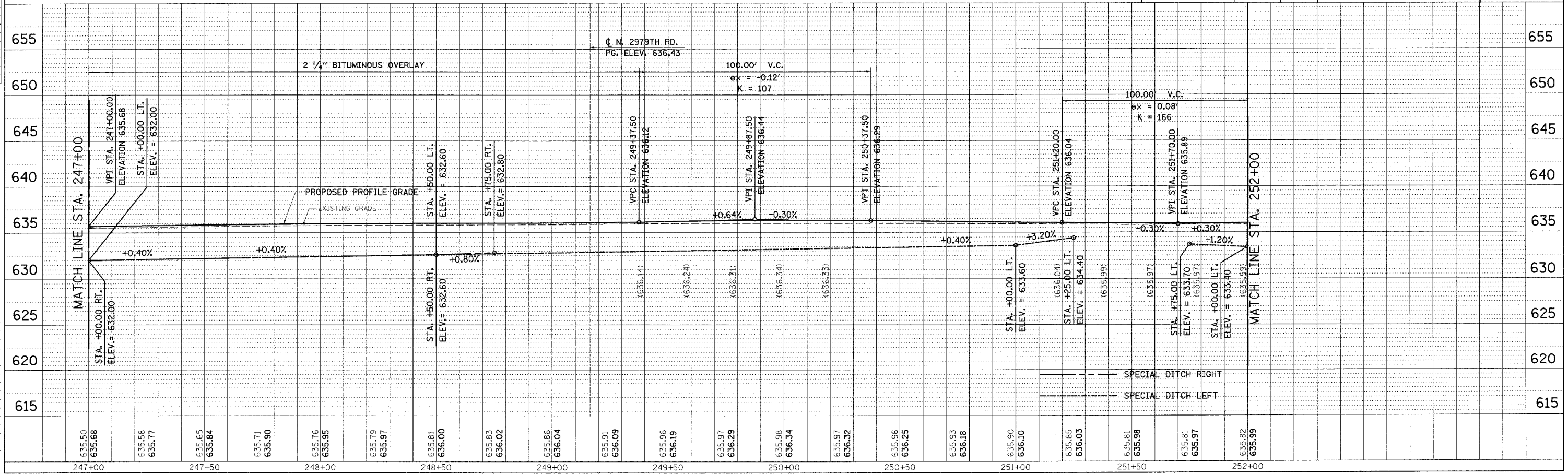
① STA. 249+16.23 (IL RTE 351) = STA. 10+00.00 (N. 2979TH RD)



REVISION	DATE	BY

GREENE & BRADFORD, INC.
CONSULTING ENGINEERS
 200 WEST WASHINGTON ST.
 SPRINGFIELD, ILLINOIS 62760
 PHONE: (217) 223-1111 FAX: (217) 223-1112
 WWW: WWW.GREENE-AND-BRADFORD.COM

COMPUTER FILE NO.
 PLN351H-03
 PROJECT: 01194_B-N
 04/01/04-RPB



IDOTEPP - 1a 8/25/98

FAU RTE. 6108 (IL. RTE. 351) LA SALLE CO.

DESIGN	DATE	REASON

PLAN	DATE	BY

PLOTS & CHECKS	DATE	REASON

PROFILE	DATE	BY

CHECKS	DATE	REASON