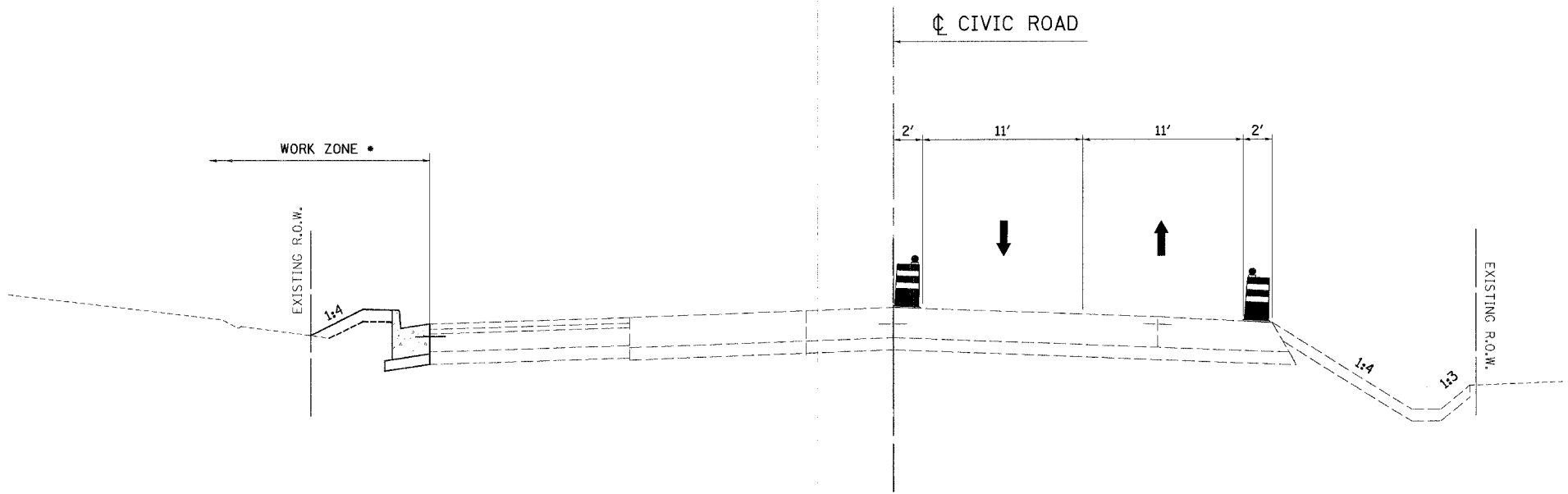


DESIGN		
INT.	DATE	REASON

PLOTS & CHECKS			
INT.	DATE	NO.	REASON

CHECKS		
INT.	DATE	REASON



- CONSTRUCT COMBINATION CURB AND GUTTER FROM STA. 48+23 TO STA. 50+86.
- CONSTRUCT BITUMINOUS SHOULDER FROM STA. 43+80 TO STA. 48+23 AND FROM STA. 50+86 TO STA. 54+75.

**STAGE 6B TYPICAL SECTION**  
STA. 43+84 TO STA. 54+75

ILLINOIS DEPARTMENT OF TRANSPORTATION  
**STAGE CONSTRUCTION**  
**TYPICAL SECTIONS**  
 FAU 6108 (IL RTE. 351)  
 SECTION (70XN & TS-1)  
 LA SALLE COUNTY

SCALE: VERT. \_\_\_\_\_  
 HORIZ. \_\_\_\_\_  
 DATE: 03/12/04

DRAWN BY: BISHOP  
 DESIGNED BY: KUNTZMAN  
 CHECKED BY: COLBROOK

GREENE & BRADFORD, INC.  
 CONSULTING ENGINEERS  
 1101 W. MONROE ST., SUITE 200  
 SPRINGFIELD, ILLINOIS 62761  
 PHONE: 217/223-1100 FAX: 217/223-1101  
 WWW: WWW.GREENE-AND-BRADFORD.COM

COMPUTER FILE NO.  
 STAGETYPES-11  
 PROJECT: 01194\_b.n  
 03/19/04-RPB

REVISIONS	
NAME	DATE