

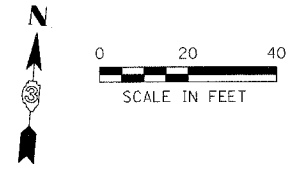
DESIGN		
INT.	DATE	REASON

PLOTS & CHECKS			
INT.	DATE	NO.	REASON

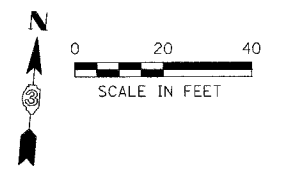
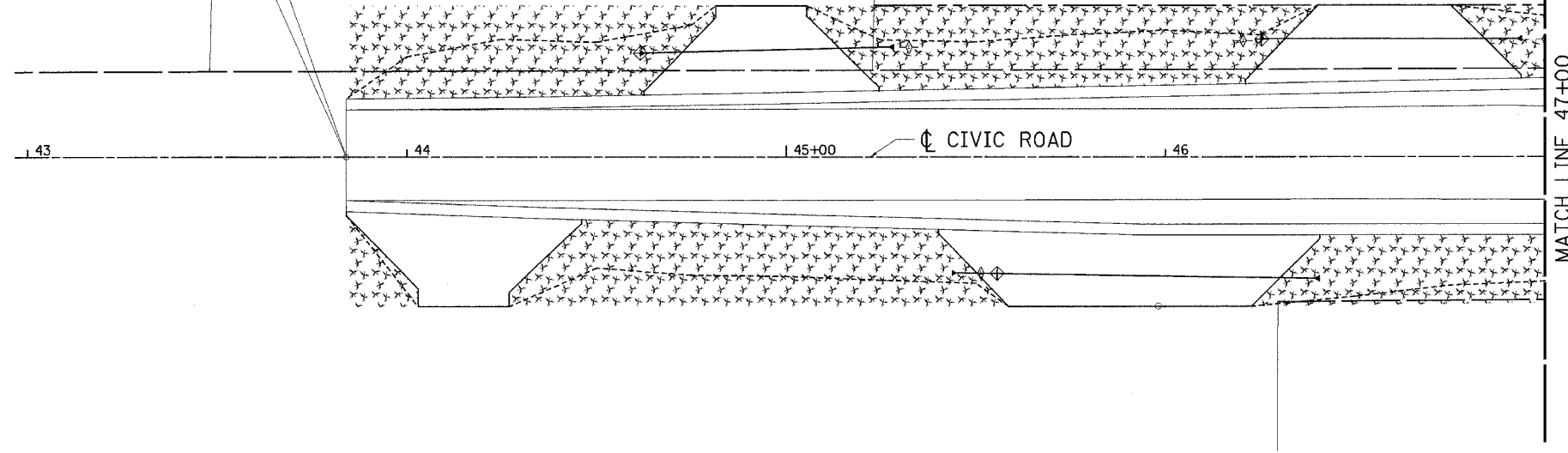
FILE NAME = SP1LES
 PLOT SCALE = SP1RSC008\$ DRV = SP1LOTTER\$
 PLOT TYPE = SP1LINES
 PLOT OPERATOR = SP1USERS

CHECKS		
INT.	DATE	REASON

F.A.U. RTE.	SECTION	COUNTY	TOTAL SHEET SHEETS	NO.
6108	(70XIN & TS-1)	LA SALLE	460	296
STA. 43+84		TO STA. 58+50		
FED. ROAD DIST. NO.		ILLINOIS	FED. AID PROJECT	
CONTRACT NO. 86603				

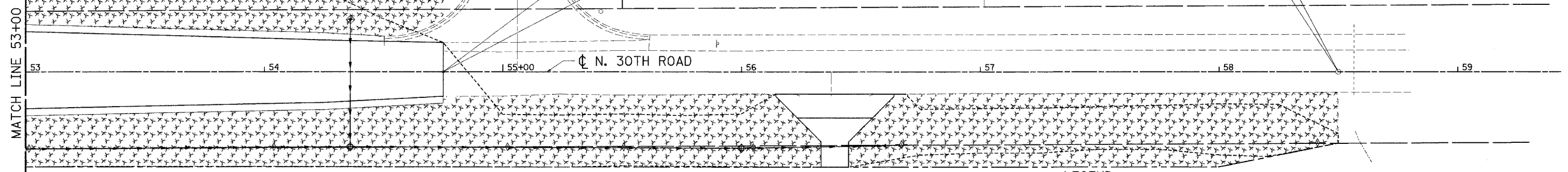


STA. 43+84.00 BEGIN CIVIC ROAD IMPROVEMENTS



STA. 58+50.00 END DITCH IMPROVEMENT

STA. 54+75.00 END ROADWAY IMPROVEMENTS



LEGEND

- SODDING
- SEEDING, TEMPORARY EROSION CONTROL SEEDING MULCH
- EROSION CONTROL BLANKET
- INLET AND PIPE PROTECTION
- PERIMETER EROSION BARRIER

REVISIONS	
NAME	DATE

ILLINOIS DEPARTMENT OF TRANSPORTATION

EROSION CONTROL PLAN

FAU 6108 (IL. RTE. 351)
SECTION (70XIN & TS-1)
LASALLE COUNTY

SCALE: VERT. HORIZ. DATE 05/07/03	DRAWN BY: MABUS DESIGNED BY: BOTT CHECKED BY: COLBROOK				
GREENE & BRADFORD, INC. OF SPRINGFIELD <small>CONSULTING ENGINEERS</small>	<table border="1" style="width: 100%; text-align: center;"> <tr> <th>COMPUTER FILE NO.</th> </tr> <tr> <td>EC_351F-02</td> </tr> <tr> <th>PROJECT</th> </tr> <tr> <td>07/28/03-PAM</td> </tr> </table>	COMPUTER FILE NO.	EC_351F-02	PROJECT	07/28/03-PAM
COMPUTER FILE NO.					
EC_351F-02					
PROJECT					
07/28/03-PAM					