

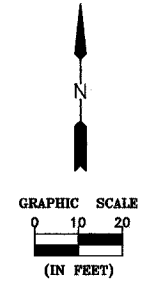
- PAVEMENT REMOVAL (PAID FOR AS EARTH EXCAVATION)
- PCC SIDEWALK, 4"
- AGGREGATE SURFACE REMOVAL (PAID FOR AS EARTH EXCAVATION)
- TRENCH BACKFILL (TYP. SEE DETAIL SHEET 2) (COST SHALL BE INCLUDED IN COST OF STORM SEWER)
- TEMPORARY EASEMENT
- PCC DRIVEWAY PAVEMENT, 6"
- AGGREGATE BASE COURSE 8"
- BITUMINOUS CONCRETE SURFACE COURSE 2"

CONTRACTOR SHALL EITHER PROTECT OR RELOCATE THIS TREE IF NECESSARY.

PERIMETER EROSION BARRIER (66 FOOT)

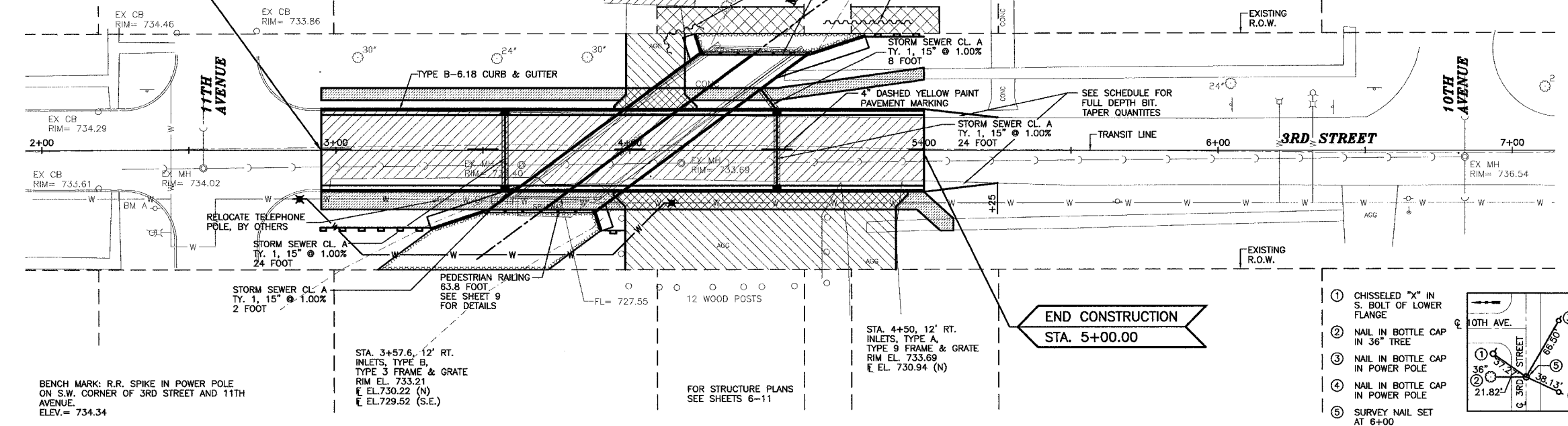
PROJECT NO.	SECTION	SHEET	TOTAL SHEETS
**	LASALLE	13	5
FILE NO. SHEET NO.	ALTERN.	FILE NO. PROJECT	DATE
03-00609-00-7		03-00609-00-13	03/04

** 03-00609-00-BR
 *** BRM-5044 (9)
 CONTRACT NO. 87294



BEGIN CONSTRUCTION
 STA. 2+95.00

END CONSTRUCTION
 STA. 5+00.00

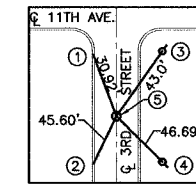
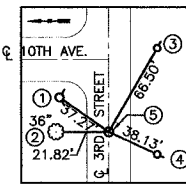


BENCH MARK: R.R. SPIKE IN POWER POLE ON S.W. CORNER OF 3RD STREET AND 11TH AVENUE. ELEV.= 734.34

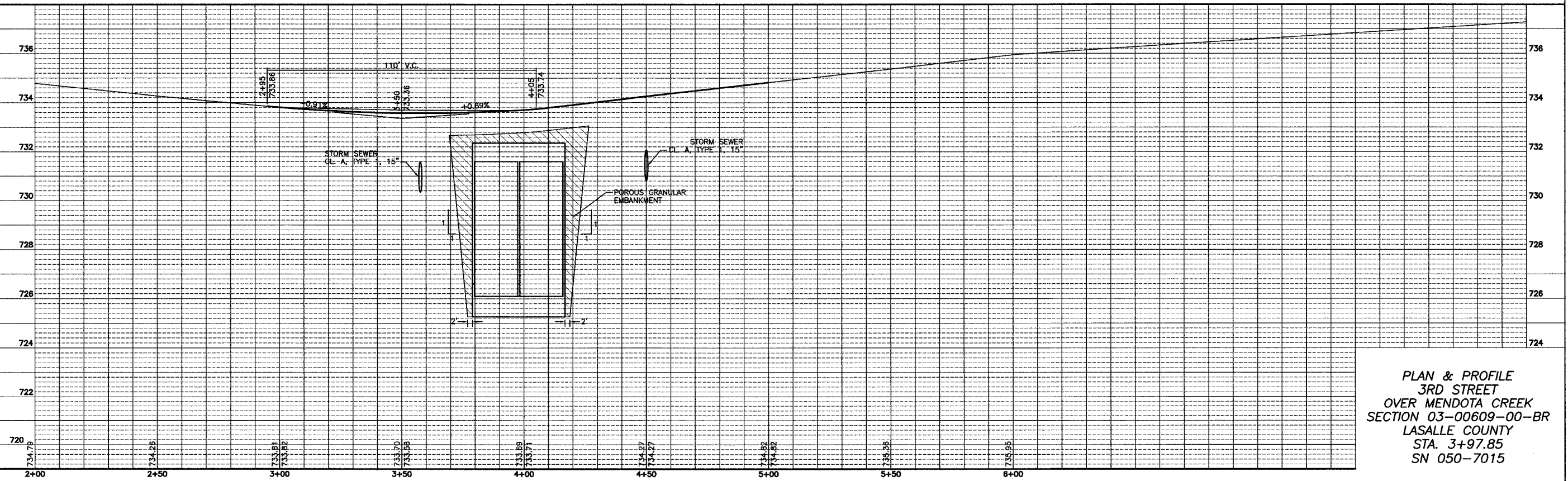
STA. 3+57.6, 12' RT. INLETS, TYPE B, TYPE 3 FRAME & GRATE RIM EL. 733.21 (N) E. EL. 729.52 (S.E.)

STA. 4+50, 12' RT. INLETS, TYPE A, TYPE 9 FRAME & GRATE RIM EL. 733.69 (N) E. EL. 730.94 (N)

- ① CHISSELED "X" IN S. BOLT OF LOWER FLANGE
- ② NAIL IN BOTTLE CAP IN 36" TREE
- ③ NAIL IN BOTTLE CAP IN POWER POLE
- ④ NAIL IN BOTTLE CAP IN POWER POLE
- ⑤ SURVEY NAIL SET AT 6+00



- ① CHISSELED "X" IN TOP OF CURB @ END OF RADIUS
- ② CHISSELED "X" IN TOP OF CURB NORTH OF POWER POLE
- ③ NAIL IN BOTTLE CAP IN POWER POLE
- ④ NAIL IN BOTTLE CAP IN POWER POLE
- ⑤ SURVEY NAIL SET AT 2+00



PLAN & PROFILE
 3RD STREET
 OVER MENDOTA CREEK
 SECTION 03-00609-00-BR
 LASALLE COUNTY
 STA. 3+97.85
 SN 050-7015

DRAWN BY: N.E.T.	11410-00 CAD/DWG: PP1 BASE	REVISIONS		PERU MORRIS ILLINOIS	3RD STREET OVER MENDOTA CREEK SECTION 03-00609-00-BR LASALLE COUNTY	PLAN AND PROFILE	SCALE: AS NOTED	SHEET 5
		DATE	BY				FILE NO.: 11410-00Y-1	OF 13
CHECKED BY: N.E.T.	DATE: 3/04							

